



Childcare

Baby Bath and Stand "White"

Model # 056201-003



**IMPORTANT:
RETAIN FOR FUTURE REFERENCE,
READ CAREFULLY**

Read all instructions before assembly and use of the Baby Bath & Stand.
Keep instructions for future use.

WARNING

WARNING - DROWNING HAZARD:

- CHILDREN CAN DROWN IN AS LITTLE AS 2cm OF WATER IN A VERY SHORT TIME.
- ALWAYS REMAIN IN CONTACT WITH YOUR CHILD DURING BATHING.
- NEVER LEAVE YOUR BABY UNATTENDED IN THE BATH, EVEN FOR A FEW MOMENTS. IF YOU NEED TO LEAVE THE ROOM, TAKE THE BABY WITH YOU.

FOLLOW THE MANUFACTURER'S INSTRUCTIONS.

DO NOT LEAVE YOUR CHILD UNATTENDED.

CHILDREN HAVE DROWNED WHILE USING BATH AIDS.

THIS IS NOT A SAFETY DEVICE.

ALWAYS KEEP YOUR BABY WITHIN ARM'S REACH.

NEVER LEAVE YOUR BABY IN THE CARE OF CHILDREN.

DO NOT ALLOW OLDER CHILDREN TO CLIMB OR PLAY ON THE BATH & STAND.

This product has been manufactured for a child with a maximum age of **12 months** or a maximum weight of **11kgs**.

Be aware of the risk of open fires and other sources of heat, such as electric bar fires, gas fires, etc. in the near vicinity of the bathing unit.

Use original accessories and manufacturer approved parts only.

DO NOT use this bath & stand if any part is broken or missing.

ENSURE that the bath & stand is completely assembled and check that all parts are securely tightened before use.

Regularly check all parts for tightness - tighten or replace if required.

Promptly replace worn or broken parts.

Babies and young children are at risk of drowning when being bathed.

NEVER use this product on an elevated surface not intended for this product.

To avoid scalding by hot water, position the product in such a way to prevent the child from reaching the source of water.

ALWAYS check the water temperature before bathing the child.

ALWAYS check the stability of the product before use.

Congratulations on your purchase of the **Childcare Baby Bath & Stand "White"**.

This product has been designed and developed with safety, comfort and functionality in mind. Please take the time to read this manual carefully before using this product and keep it in a safe place for future reference.

Contents

Assembly contents list

Assembly / Operating instructions

How to care for your **Childcare Baby & Stand**



Due to variations in the style and design of our products, the photographs and illustrations shown in this instruction manual are generic, therefore product fabrics, colour and design may vary from images shown. CNP Brands reserves the right to alter product specifications without notice as a result of our ongoing policy of product improvement.

Check what you have received...

You have received **1 box**. Please check the contents of the box against the list below. If anything is missing, please contact Customer Service.

In Australia, contact **CNP Brands on 1300 667 137**, in New Zealand contact **Wainhouse Distribution on 0800 567 5000**.

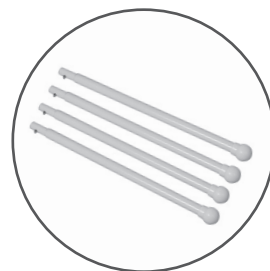
Supplied loose in box:

Bath Stand



x 1

Legs



x 4

Bath



x 1

Bath Plug



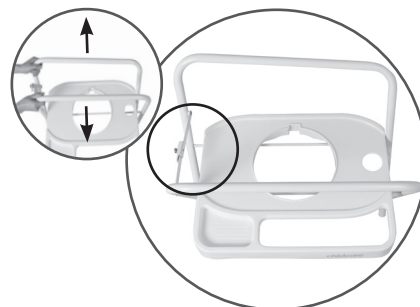
x 1

There are no accessories recommended for use with this Baby Bath & Stand.

To assemble Frame...

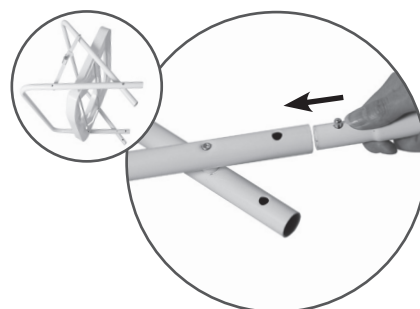
1

- 1a. Grasp the top of both sides of the Bath Stand.
- 1b. Pull outward until Bath Stand opens and locks into place.
- 1c. Push down on frame lock to ensure lock is fully secure.



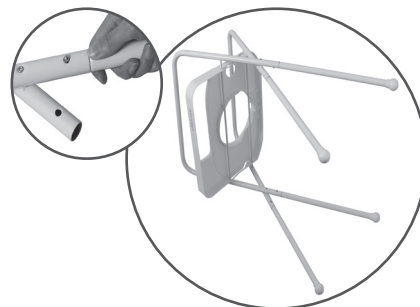
2

- 2a. Lay Bath Stand on its side.
- 2b. Align one Leg with one end of the Bath Stand.



3

- 3a. Insert Leg into the end of the Bath Stand, until the pop-pin 'clicks' into position.
- 3b. Repeat for remaining 3 Legs.



4

- 4a. Stand Bath Stand upright.



To assemble Bath...

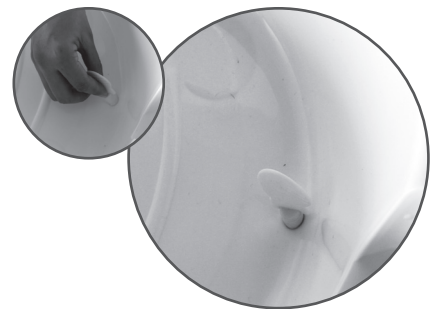
1

- 1a. Insert Bath into the top of the Bath Frame, ensuring that all 4 feet sit flat and secure on Bath Frame platform.
- 1b. Ensure the higher end of the Bath corresponds with the higher end of the Bath Frame.



2

- 2a. Insert Bath Plug into Bath drainage hole.



To fold Bath Stand...

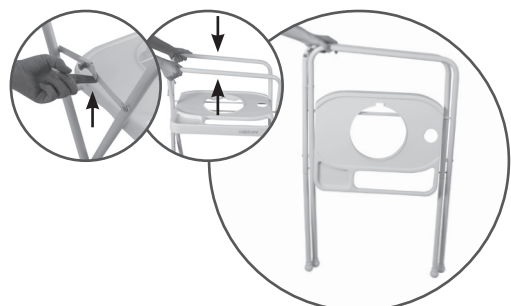
1

- 1a. Remove Bath from the Bath Stand.



2

- 2a. Push frame lock upward to unlock.
- 2b. Grasp the top of both sides of the Bath Stand.
- 2c. Push sides towards each other to fold frame for storage.



Cleaning

This product has been designed and developed with safety, comfort and functionality in mind. Please take the time to read this manual carefully before using this product and keep it in a safe place for future reference.

To ensure the long-lasting use of your change centre, wipe down with a damp cloth and use a mild soap solution if necessary. Do not use abrasive cleaners. Always store product in a clean dry place.

Maintenance

Always check parts regularly for tightness of screws, nuts and other fasteners – tighten or replace if required. To maintain the safety of your change centre seek prompt repairs for bent, torn, worn or broken parts. Use only those parts and accessories approved by **CNP Brands**.

If you have any difficulties in assembling the change centre, please contact our Service Department.

In Australia, contact **CNP Brands on 1300 667 137**, in New Zealand contact **Wainhouse Distribution on 0800 567 5000**.



CNP BRANDS

CHILDCARE NURSERY PRODUCTS | EST. 1899



Distributed in Australia by CNP Brands
Customer Service 1300 667 137

W: www.cnpbrands.com.au
E: info@cnpbrands.com.au
F: www.facebook.com/CNPBrands
I: @cnp_baby

Distributed in New Zealand by Wainhouse
Distribution
2-6 Argyle St, Morningside,
PO Box 41-014,
St Lukes, Auckland, New Zealand
Customer Service: 0800 567 5000

E: helpline@wainhousedist.co.nz

