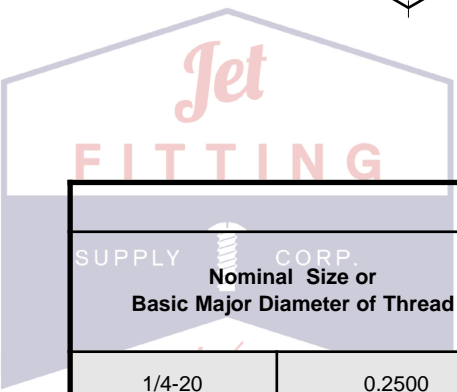
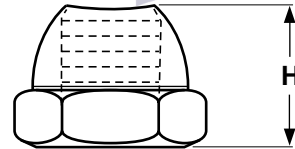
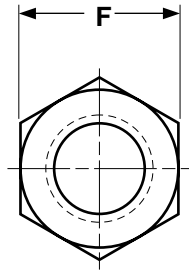


Open End--  
Steel

# Cap Nuts

Nuts



## OPEN-ENDED HEX CAP NUTS

Nominal Size or Basic Major Diameter of Thread		F	H
		Width Across Flats	Overall Height
		Ref	Ref
1/4-20	0.2500	7/16	21/64
5/16-18	0.3125	9/16	3/8



<b>Description</b>	A low-crown cap nut with the top portion of its dome removed, allowing the male-threaded part to protrude through the opening.
<b>Applications/ Advantages</b>	The open-ended cap nut still offers much of the attractiveness and protection of a regular closed-end cap nut but can be used with bolts or screws of any length.
<b>Material</b>	Nuts shall be made from a low-carbon steel which conforms to the following chemical composition requirements-- <i>Carbon: 0.47% max.; Phosphorus: 0.12% max.; Sulfur: 0.23% max.</i>
<b>Plating</b>	Steel open-ended cap nuts are usually supplied with a nickel plate finish. See Appendix-A for more information.

