

**Important Notes**  
Please note the factory set pin code is:  
**Pin Code:** 123456 (factory set)

**Pin Code Requirements:**

- Code must always have 6 digits

**Finger Scan:**

- This safe features a 10 finger print memory
- To meet the VdS class 1 high security standard two finger prints per user must be programmed. Therefore a 10 finger print memory allows 5 different users to be programmed.
- To open safe using finger print scanner, two different fingers need to be used, which have to be swiped over the sensor successively

**Technical Support**  
If you require technical assistance with this safe please contact our UK support team on:

**Tel:** 01274 395 333  
**Email:** support@burgsafes.co.uk  
**Web:** www.burgsafes.co.uk  
**Address:**  
Burg-Wächter UK / Sterling Locks Ltd  
Eurocam Technology Park, Chase Way  
Bradford, West Yorkshire  
BD5 8HW

**Warranty**  
This Burg-Wächter safe is covered under a limited two year warranty and is non-transferable covering only the original purchaser. Proof of purchase from the retailer is required for warranty service.

**What is not included under the warranty:**

- Normal wear and tear of product use
- Misuse, lack of care, mishandling, accident, abuse or other abnormal use
- Use of the product other than for its intended purpose
- Damage caused by improper or unauthorized repair or maintenance
- Product that has been modified or altered

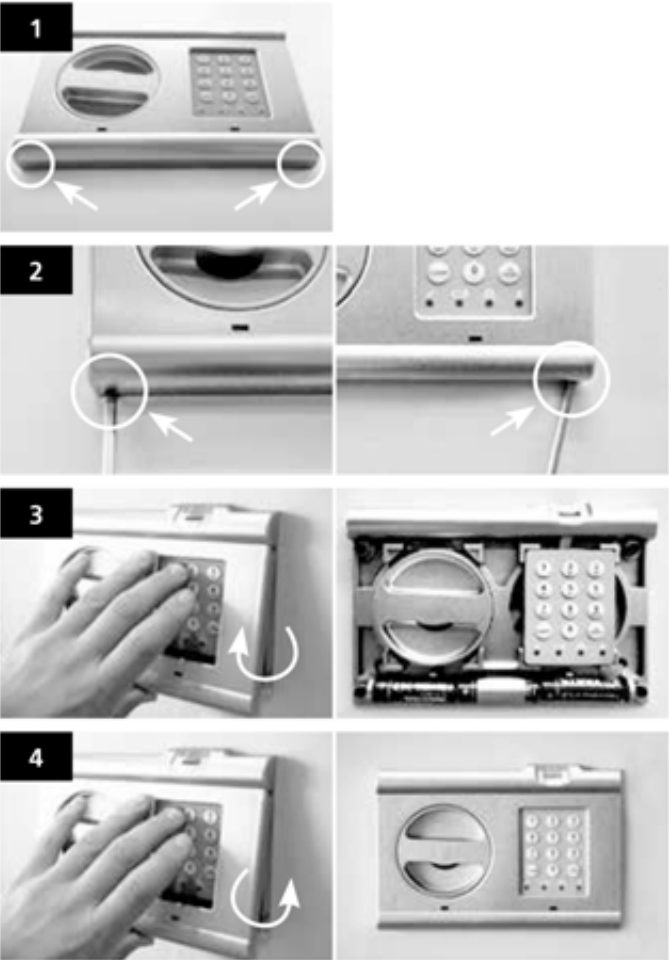
**Battery Replacement**  
When the Battery replacement LED is illuminated, please replace all 3 batteries (LR6 / AA / 1.5V / Alkaline).

The batteries are located underneath the lock facia. To access the battery compartment please follow these steps:

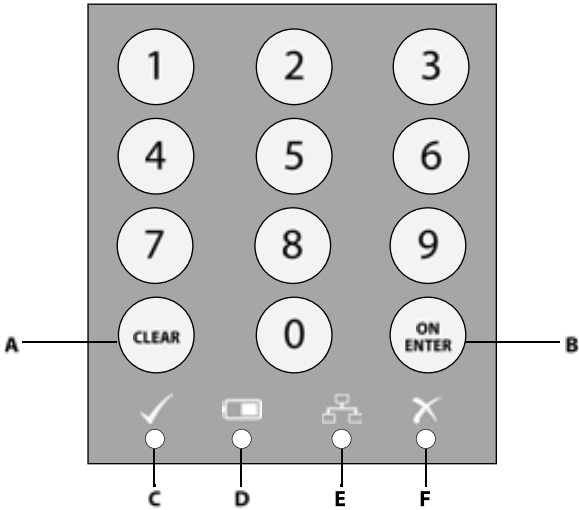
1. Locate the two holes to the left and right hand sides at the bottom of the locking facia
2. Using a small screw driver, insert the end into each of the holes and apply gentle pressure to release the clips fixing the facia in place
3. Gently lift the lock face plate from the bottom up and outwards until it is completely removed. The batteries are now accessible and located at the bottom of the locking plate. Replace all three batteries with LR6 / AA / 1.5V / Alkaline batteries
4. To re-install the facia plate, gently insert the top of the plate to its original position and push it inwards and downwards until the clips click back in place securing it to the lock.

The safe can now be operated in the usual manor.

**Disposal of Batteries:**  
Batteries are made from important resources and chemicals, including lead, cadmium, zinc, lithium and mercury. Recycling is one way you can help the environment and you should dispose of used batteries separately from other waste, using the collection and recycling schemes available.



**Lock Keypad Diagram**



**A: Clear** —Clear key entry / Leave programming mode  
**B: On / Enter** —Turn on unit ready to accept user pin code. Used to confirm/enter pin  
**C: Green "Accepted" LED**—Briefly illuminates when a valid pin code is entered and programming is successful  
**D: Battery replacement LED**—When this LED is on, please replace all 3 batteries (LR6 / AA / 1.5V / Alkaline).  
**E: Entry / Programming LED**—Flashes when in programming mode. When the programming mode is terminated LED will turn off.  
**F: Denied / Blocking LED**—LED on when an invalid code is entered or programming is incorrect. If a incorrect code is entered three times in a row, the operation of the safe will be blocked for 5 minutes. The LED will flash during this time and code entry / fingerprint will not work.

Combi-Line/CityLine Version EFS  
Quick Start Guide





- Step 1:**  
Setting your safe up for the first time:
- Remove the clear plastic tab to activate the batteries inside the lock
  - Please allow approximately 30 seconds before pressing the **“On/Enter”** button—the yellow “Entry / Programming” LED will illuminate
  - Enter the factory set pin code: **123456**
  - The green “Accepted” LED illuminates when code is accepted
  - Now turn the rotary knob clockwise to open the safe door

The safe door will now open and can be programmed. Remove content including any fixings instructions.

- Step 2:**  
Change the factory set codes:
- Your safe is not secure with the factory set pin code and therefore it is important you change it to your own personal code.

- Code Requirements:**
- Pin code must have 6 digits.
  - For security reasons we recommend you do not use personal numbers such as your date of birth or telephone number as a user or master code

**Attention:** Any changes of the pin code should be made with the safe door opened!

**Step 3 continued:**

- Delete finger print memory:**  
To delete stored finger print the safe needs to be in **programming mode**. *(Please follow “Step 2” instructions to enter programming mode)*

- To delete **all** previously stored finger prints:
- Type **“33”** on the keypad
  - Press **“On/Enter”**
  - The Green “Accepted” LED illuminates when the operation is complete
  - The yellow “Entry / Programming” LED will now flash to indicate you are still in programming mode
  - You can now program up to 10 new finger prints following the steps outlined in **“Add new finger print”**
  - To exit programming mode press **“Clear”** button twice

- Step 4:**  
Operating the safe:
- Once the safe is programmed to a new pin code, including any finger print that may be stored, it can be operated as follows:

- Open using pin code:**
- Press **“On/Enter”**
  - Enter user set six digit pin code on keypad
  - The green “Accepted” LED illuminates when code is accepted
  - Now turn the rotary knob clockwise to open the safe door

**Thank you for purchasing this German engineered high quality safe**

This safe was developed and manufactured by Burg-Wächter using the latest biometric fingerprint sensor technology. The lock and fingerprint sensor are certified to VdS class 1 – an internationally recognised security standard that ensures it meets a high level of security.

A pin code or finger print can be used to operate the safe.

**Important: Please read this Quick Start Guide before you start programming.**

- Store code in a secure location and **not inside the safe**
- Always programme the safe with the safe door open to prevent accidental lock-out
- For security reasons we recommend you do not use personal numbers such as your date of birth or telephone number as a pin code
- If the safe is not going to be used for a prolonged period of time, remove the batteries

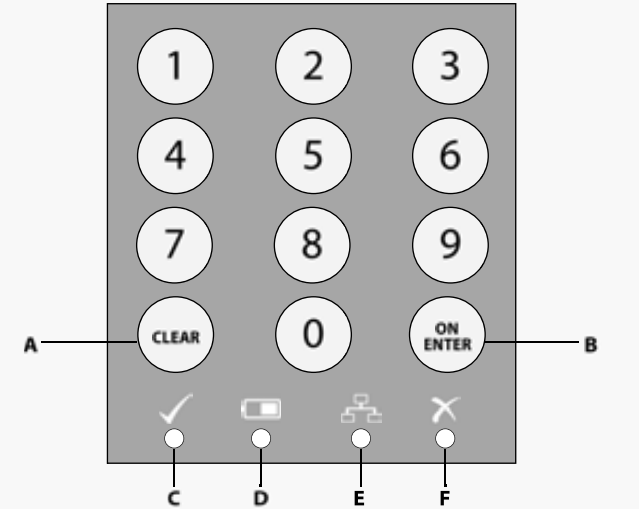
- Step 2 continued:**  
Enter Programming mode:
- To change the factory set pin code the safe needs to enter “programming mode”. To do this:
- Press **“On/Enter”**
  - The yellow “Entry / Programming” LED will illuminate
  - Enter the number **“76”** to enter programming mode
  - The yellow “Entry / Programming” LED turns off
  - Press **“On/Enter”** and enter the factory set pin code (123456)
  - The green “Accepted” LED briefly illuminates followed by the yellow “Entry / Programming” LED flashing.
  - As long as the yellow “Entry / Programming” LED is flashing, programming mode is activated and the safe can be programmed.

- Change pin code:**  
*While in programming mode with the yellow “Entry / Programming” LED flashing (see above):*
- Enter the number **“22”**
  - Press **“On / Enter”** button
  - Type your new code (6 digits)
  - Press **“On / Enter”** button
  - Enter new code again
  - Press **“On / Enter”** button
  - The green “Accepted” LED briefly illuminates to indicate successful code change
  - Leave the programming mode by pressing the **“Clear”** button **twice**

- Step 4 continued:**  
Operating the safe:
- Operate safe with finger print:**
- Press **“On/Enter”**
  - The yellow “Entry / Programming” LED will illuminate
  - Swipe one programmed clean & dry finger firmly over finger print scanner
  - “Accepted” LED lights if finger print is accepted
  - The yellow “Entry / Programming” LED will illuminate again to indicate a second finger print is required
  - Swipe the second programmed finger firmly over finger print scanner *(Please note two unique programmed finger prints must be used, you cannot use the same finger print twice)*
  - “Accepted” LED lights if finger print is accepted
  - Now turn the rotary knob clockwise to open the safe door

- Lock safe door:**
- Close safe door and hold in closed position
  - Turn the rotary knob counter-clockwise to lock the safe door
  - A pin code or finger print must now be used to open the door

**Lock Keypad Diagram**



- A: Clear** —Clear key entry / Leave programming mode  
**B: On / Enter** —Turn on unit ready to accept user pin code. Used to confirm/enter pin  
**C: Green “Accepted” LED**—Briefly illuminates when a valid pin code is entered and programming is successful  
**D: Battery replacement LED**—When this LED is on, please replace all 3 batteries (LR6 / AA / 1.5V / Alkaline).  
**E: Entry / Programming LED**—Flashes when in programming mode. When the programming mode is terminated LED will turn off.  
**F: Denied / Blocking LED**—LED on when an invalid code is entered or programming is incorrect. If a incorrect code is entered three times in a row, the operation of the safe will be blocked for 5 minutes. The LED will flash during this time and code entry / fingerprint will not work.

- Step 3:**  
Programme finger prints:
- This safe is fitted with a high quality biometric finger scan that can store up to ten unique finger prints to open the safe.

To programme a finger print the safe needs to be in **programming mode**. *(Please follow “Step 2” instructions to enter programming mode—remember to use new pin code programmed in step 2)*

- Add new finger print:**
- Type **“23”** on the keypad
  - Press **“On / Enter”**. The yellow LED illuminates
  - Move one finger over the sensor several times. The yellow LED briefly turns off after each successful scan. Repeat this process until the Green “Accepted” LED illuminates to indicate the finger print is successfully stored
  - The yellow “Entry / Programming” LED will now flash to indicate you are still in programming mode
  - You can save an additional finger print by repeating the steps above

**Note: To meet the high security VdS certification, this finger scan requires two finger prints to operate, therefore at least two finger prints must be programmed**

- To exit the programming mode, press the **“Clear”** button twice

- Blocking Time:**  
For added security this safe features additional security features:
- If a pin code is entered incorrectly three times the lock will not accept any further entries for 5 minutes
  - After 5 minutes the pin code can be entered in the usual manner
  - If the pin is entered incorrectly again the blocking time is doubled to 10 minutes before entry is allowed
  - Further incorrect entries will each incur a 10 minute blocking time until the correct code is successfully entered

**NOTE to meet the high security VdS certification this lock has NO emergency override or access code. If pin is forgotten and no finger prints are stored the safe cannot be opened. Furthermore without a pin code the safe cannot be re-programmed.**

We recommend you store a copy of the pin code in a secure location and not inside the safe. In the event of lock-out or if you have a enquiry regarding the safe, please contact Burg-Wächter / Sterling on:

01274 395 333

*Service work to safes due to forgotten pin codes is not covered under warranty and may be chargeable.*

**Technical Information**

Pin Code Memory	1
Finger Print Memory	10
Blocking Times	After 3 incorrect entries for 5 minutes, then 10 minutes for each incorrect entry thereafter
Power Supply	3 x MIGNON LR6/AA/ALKALINE
Room Conditions	-15°C to +50°C / up to 95% rel. air humidity

- Fix / Anchor Safe:**  
It is highly recommended the safe is securely bolted to a wall or floor to prevent removal in the event of a burglary. **Safe is supplied pre-drilled or part-drilled depending on the model.**