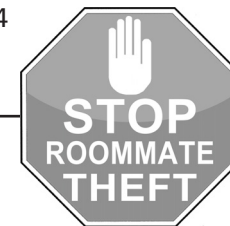




DORM SAFE

SECURE ♦ RELIABLE ♦ PEACE OF MIND

US Patent D617974



Dear Valued Customer,

Congratulations on the purchase of your **Stealth Tactical Dorm Safe**! Here at Stealth, we pride ourselves on providing easy and simple solutions for your everyday storage needs. You have taken a very important step in protecting your most valuable possessions.

This full steel safe was designed specifically for **college dorm rooms** or RV's where space is limited. It's **vertical design** optimizes floor space and will easily fit in a closet or under a desk.

If you have any questions regarding your Stealth Dorm Safe, please contact Stealth Customer Service at **(800) 827-7534**.

FEATURES:

- ◆ Electronic Lock: Standard 9V battery operated and easily replaced from outside safe (battery not included)
- ◆ Opens with 4-digit pin # or the swipe of any card with a magnetic strip
i.e. driver's license, credit card, gift card, etc.
- ◆ Half Shelves (3)- Lined with rubber to protect valuables
- ◆ Rear access holes for security cable installation and in-safe charging access
- ◆ Floor mounting plate included (hardware and screws not included)



SAFELY STORE AND SECURE:

- ✓ Up to 18" Laptops
- ✓ Cell Phones, iPod, iPad
- ✓ Keys
- ✓ Wallet
- ✓ Jewelry
- ✓ Money
- ✓ Important Documents
- ✓ Prescription Medications
- ✓ Glasses
- ✓ Smaller Items

DIMENSIONS:

Interior:

18.5"h x 6.5"w x 12"d

Exterior:

20"h x 7"w x 14"d

Weight:

35 lbs

Interior Shelves:

Height to first shelf 5.25"

Height to second shelf 9.5"

Height to third shelf 14"

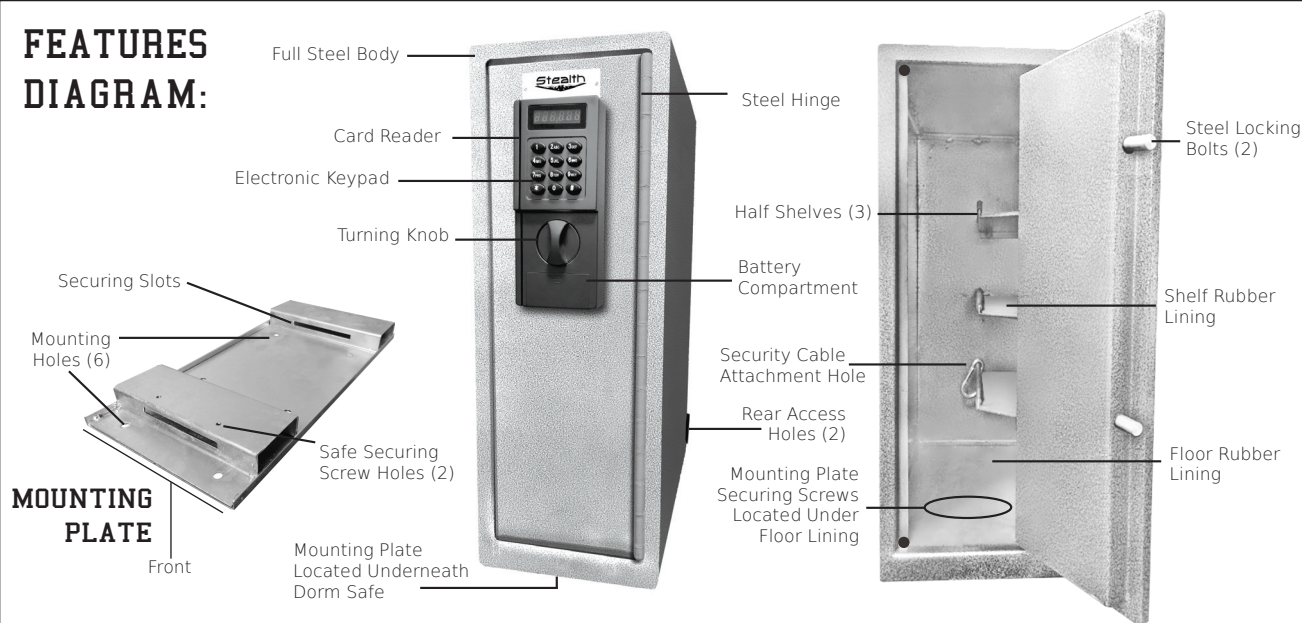
Shelf width 3.25"

INCLUDED:

- 72" Vinyl Coated Steel Cable
- Hook
- Mounting Plate



FEATURES DIAGRAM:

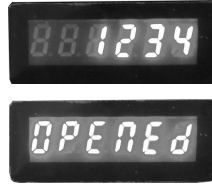


OPENING SAFE:

Note: Safe can be opened by EITHER keypad combination OR card swipe once programmed. **Card reader will not work without programming first.**

Electronic Keypad:

1. Use keypad to punch in 4-digit number code (Factory set code is: 1 2 3 4)
2. Press #
3. Wait until screen reads: "Good"
(If code is wrong, screen will read "E-code" and beep. Retry.)
4. Rotate turning knob counter-clockwise and pull open



Please Note:

- There will be a 5 minute penalty after 4 consecutive wrong code attempts
- Press * to delete the latest entered digit
- After 20 seconds of no activity, lock will go into sleeping mode. Press any digit to activate.



Card Reader:

1. Press #
2. Wait until screen reads: "Card"
3. Swipe card (with magnetic strip facing keypad)
4. Wait until screen reads: "Opened"
5. Rotate turning knob counter-clockwise and pull

CLOSING SAFE:

- Close door and rotate turning knob clockwise to relock bolts
- If bolts are deployed, reopen safe before closing

CUSTOM PROGRAMMING SAFE:

Note: If input code is wrong, screen will read "E-code" and beep. Retry.

Note: After card reader is programmed, card information must first be deleted in order to reprogram with another card.

Changing Keypad Combination:

1. Press * * 0 #
2. Screen should read: "Code"
3. Input current combination
(Factory set code is: 1 2 3 4)
4. Press #
5. Screen should read: "Good"
6. Input custom 4-digit combination
7. Press #
8. Screen should read: "Again"
9. Re-enter custom 4-digit combination
10. Press #
11. Screen should read: "Good"

Programming Card Reader:

1. Press * * 6 #
2. Screen should read: "Code"
3. Input 4-digit combination
4. Press #
5. Screen should read: "Card"
6. Swipe desired card
(with magnetic strip facing keypad)
7. Swipe until screen reads: "Good" instead of "Again"

Deleting Card Information From Reader:

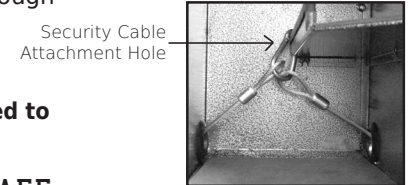
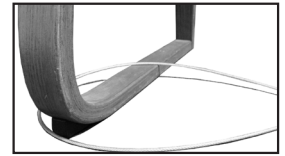
1. Press * * 8 #
2. Screen should read: "Code"
3. Input 4-digit combination
4. Press #
5. Screen should read: "Clear"

CARE AND MAINTENANCE:

- Keep liquids away from keypad
- Do NOT disassemble safe -- For all repairs call Stealth Customer Service

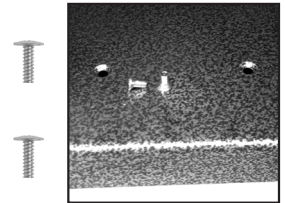
SECURING SAFE WITH CABLE:

1. Insert one end of steel cable through safe rear access hole
2. Wrap cable around a sturdy and secure object next to safe
3. Insert other end of steel cable into safe through the other rear access hole
4. Clasp each end of cable to hook
5. **Clasp hook onto attachment hole connected to bottom shelf to secure cable to safe**



MOUNTING SAFE:

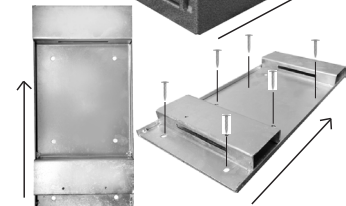
1. Peel back the floor lining of the safe until two (2) screws are revealed
2. Unscrew and remove both screws
3. Slide dorm safe forward until slides off of metal mounting plate
4. Secure mounting plate by screwing it down to desired location using the six (6) holes in the middle and front of the plate (screws not included)



- Use proper drill tools depending on the type of floor you are mounting the safe on (wood, tile, or concrete)
- Mark the exact locations of the mounting holes on the floor where you want your safe to go

- Drill the appropriate size holes for the anchors you are using
- Match the mounting plate holes over the drilled holes in the floor
- Secure the mounting plate to the floor by screwing the appropriate screws through the mounting plate and into the floor

5. Slide Dorm Safe back onto the mounting plate
6. Rescrew safe back to mounting plate
7. Reposition floor lining
8. Your Dorm Safe is now securely mounted



INSERTING AND CHANGING KEYPAD BATTERY:

- Note:** Low battery alert will show on keypad screen (9V battery not included)
1. Slide battery cover downward and remove to expose battery compartment
 2. Disconnect battery from battery connector
 3. Replace and reconnect new battery to battery connector