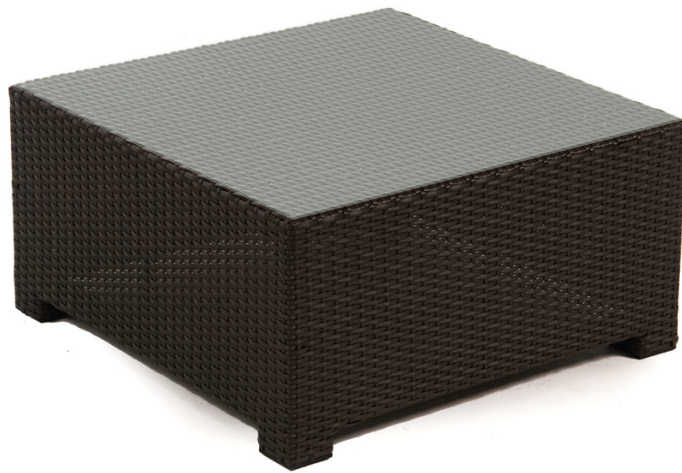


KANNOA

MONACO



Shown in Espresso Wicker with Tempered Glass
(Pieces may be available in different finishes. Please refer to the Materials section)

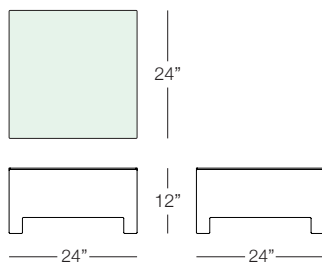
Coffee Table

MON501

SPECS & DIMENSIONS

Overall: w:24" d:24" h:12"
Seat Height: N/A Arm Height: N/A
Weight: 17 Lbs.

Notes:



MATERIALS & CERTIFICATIONS

- Aluminum: Powder Coated / Welded Joint
- Wicker: High Density Polymers
- Fabric: 100% Acrylic **sunbrella**
- Sling: PVC Sling **Serge Ferrari**
- Faux Wood: Polypropylene Slats
- Cement: Fiber Reinforced Cement
- Glass: Tempered Glass
- Plastic: Polypropylene & Polyethylene



Outdoor Safe



100% Recyclable



Fire CA-117



Water Resistant



Quick Ship