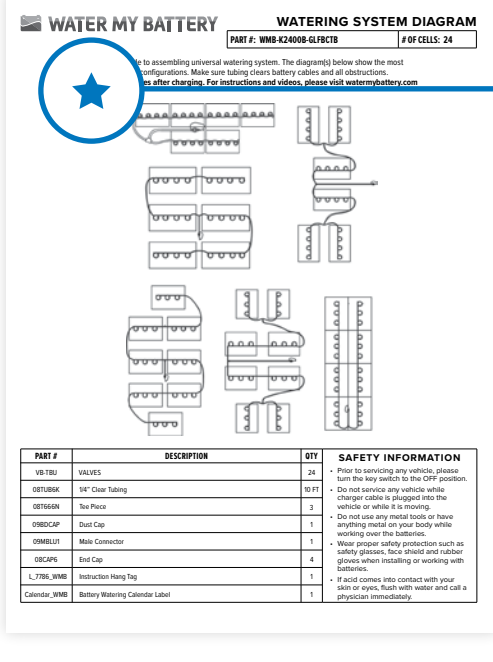


INSTALLING A UNIVERSAL BATTERY WATERING SYSTEM:

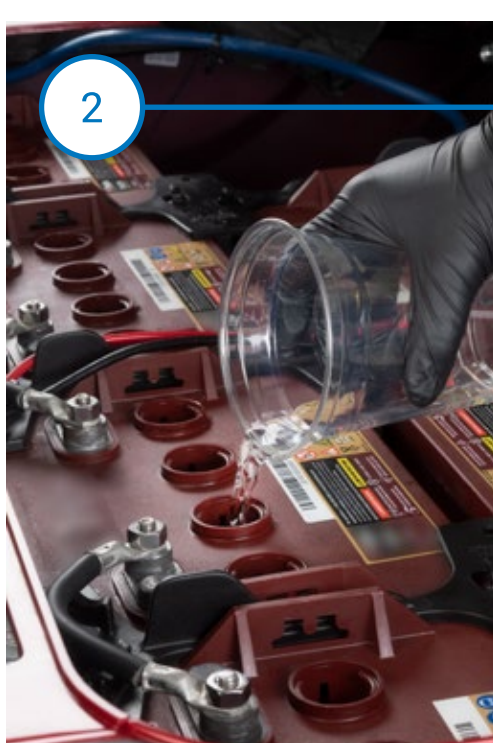
Always wear personal protective equipment (goggles, gloves, etc.) to protect yourself from sulfuric acid.
Read instructions in entirety before beginning the installation.



Use the System Diagram provided as a general design of how the system should be installed.



Remove existing battery caps.



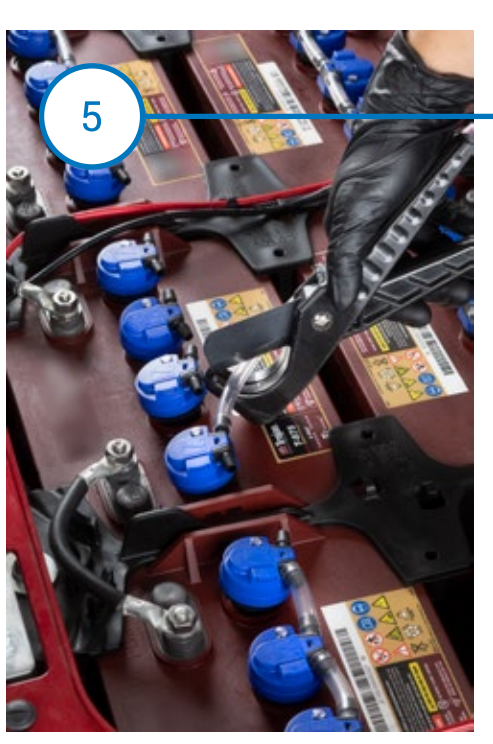
Ensure the electrolyte level is covering the plates in each cell. If not, add just enough water to cover the plates.



Insert the valves into the cells. Make sure the valves are facing the same way on each individual battery.
***Do not** snap into place.



Attach the tubing onto the first valve. Make sure it is secure and covers the barbs completely.



Measure the distance to the next valve and make a straight cut. Be sure to cut the length so it fully covers the barbs.

Repeat steps 4 & 5 until all valves are connected.

When making turns at the end of the battery, you'll want to leave a loop to ensure proper water flow.

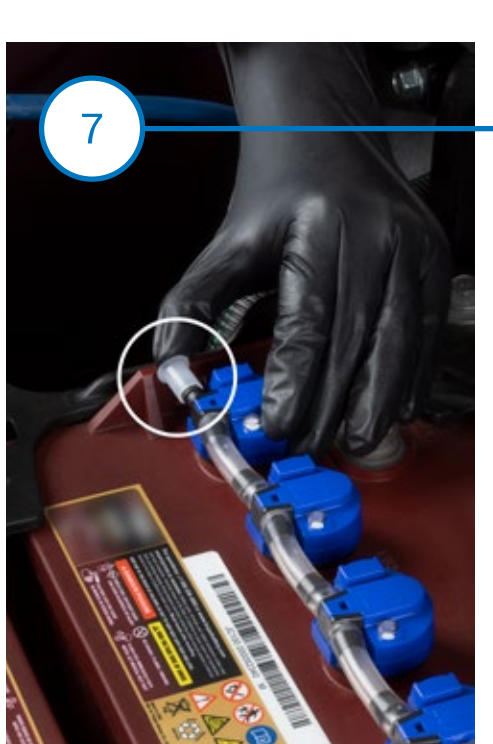
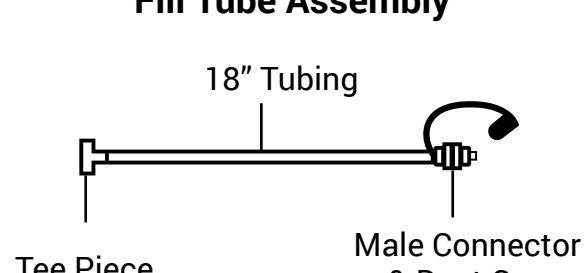
Route the tubing underneath the cables.

The tubing should never be pinched.

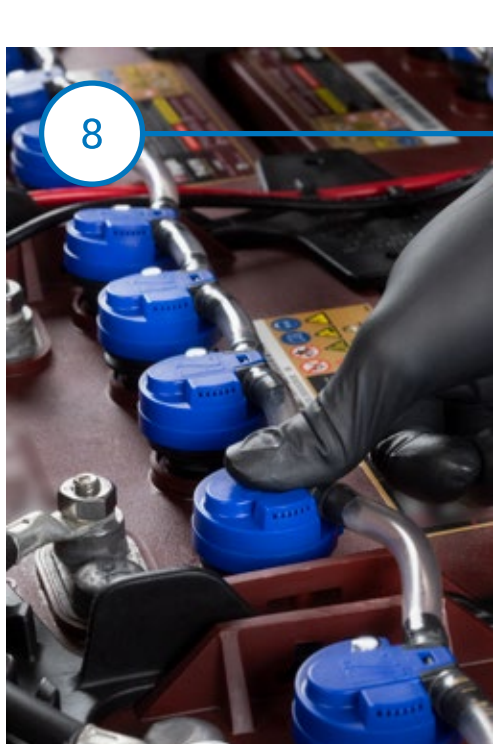


When all valves are connected, install the fill tube by cutting the tubing between two batteries. The fill tube should generally be placed in the center of the battery. Use the System Diagram for proper placement.

Fill Tube Assembly



Use the end caps to close off the open ends of the system.



Lastly, push down on the center of each valve to snap into the cell.