





# del kathryn barton

## ABOUT THE ARTIST

Del Kathryn Barton is widely recognised as one of Australia's leading figurative painters of her generation. Barton graduated with a Bachelor of Fine Arts from the College of Fine Arts at the University of New South Wales in 1993, where she was subsequently employed as a lecturer in drawing. Barton's decorative, highly detailed paintings are known for their vibrant, figurative imagery – combining traditional painting techniques with contemporary design and illustrative styles.

Barton's pictures present a world where everything is fecund and alive. No part of the picture plane is without adornment, and no figure or creature is less charmed than any other. Using a mixture of materials, including synthetic polymer paint, gouache, watercolour, pen and often glitter and sequins, she embroiders her world. Barton's transfigurations throw us off balance, as does her giddy sense of colour and scale. Her work is unashamedly girly and her palette kaleidoscopic. Obsessive patterning and fragile heroines revive memories of childhood.

## ABOUT THIRD DRAWER DOWN

Third Drawer Down was founded in Melbourne, Australia in 2003, as a project producing limited edition artist tea towels as prints-on-linen. Third Drawer Down has grown into a global business, companies in Australia and United States (fall 2018), and has collaborated with some of the world's most influential contemporary artists. Making homewares and gifts with an uncompromising dedication to artistic integrity, functionality and accessibility is at the core of the company's ethos.

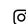


### AUSTRALIAN OFFICE

[gab@thirddrawerdown.com](mailto:gab@thirddrawerdown.com)  
[press@thirddrawerdown.com](mailto:press@thirddrawerdown.com)  
+61 (0)3 9534 4088  
[thirddrawerdown.com](http://thirddrawerdown.com)

### GLOBAL OFFICE

[wholesale@thirddrawerdown.com](mailto:wholesale@thirddrawerdown.com)  
[press@thirddrawerdown.com](mailto:press@thirddrawerdown.com)  
+61 (0)3 9534 4088  
[thirddrawerdown.com](http://thirddrawerdown.com)

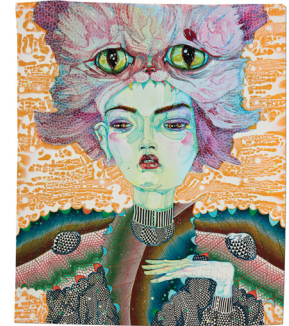
### SOCIAL

 @thirddrawerdown  
 @thirddrawerdown  
 /thirddrawerdown



**Shimmer-self Tea Towel**  
TDDS\_DKB\_CLUTCH\_MOTHER

100% Linen- 50 x 67 cm / 19.7 x 26.4".  
Gift Packaged.



**Be The Heart Feeling Silk Scarf**  
TDDS\_DKB\_SCARF\_HEART

Digitally printed on 100% silk with hand-rolled edges. 100 x 120 cm / 39.3 x 47.2".  
Gift Packaged.



**My Mother Is Awake Now Clutch**  
TDDS\_DKB\_CLUTCH\_MOTHER

100% Cotton. 28 x 20 cm / 11 x 7.8"