

k | gallery

Jane Tangney

Karijini

JULY 28 – AUG 26, 2018



Jane Tangney

Jane Tangney is a Western Australian artist immersed in the ever-evolving genre of landscape painting. Her sensitively observed works are richly nuanced responses - not only to place, but to broader notions of the human condition. Jane's use of colour, paint handling and compositional forms are a lyrical blend of restraint and complexity. Heavy impasto paintings in oil and beeswax are often juxtaposed with works on paper that invite intimacy and lightness.

Jane has been exhibiting in group and solo shows since 1998. She has been selected as a finalist in 8 Glover Prizes and was recently highly commended in the Hadley's Art Prize 2017. Her works are held in private and public collections including Artbank, Curtin University, City of Fremantle and The Westin Hotel Group. She is among 50 artists featured in a book, due for release in October 2018. Written by Amber Creswell Bell and published by Thames & Hudson, the book celebrates contemporary Australian landscape painting.



Artist Statement

“As a landscape painter, I am interested in notions of identity and connection to place.

This new body of work was inspired by a recent trip to Karijini (Banyjima name for the Hamersley Range) situated in the Pilbara region of WA.

Within the range is the stunning Karijini National Park - traditional home to the Banyjima, Kurrama and Innawonga people. Nearby lies the ghost town of Wittenoom - a place of significance to my grandparents and dad who moved there in 1947, unaware of the health risks this newly established asbestos mining town would later pose. Wittenoom is a place cemented into the psyche of WA. It's an ongoing industrial disaster of epic proportion, inspiring Midnight Oil's anthemic song, Blue Sky Mine. For me it has always been a place of intrigue.

As a child I heard adults talk – I sensed their anxiety. Maybe hearing the words 'ghost town' sucked me in, or the characters who'd come by Nan's place with beer, leathery faces and funny stories - 'Nor'westers' Nan called them.

Pop died from Wittenoom's blue asbestos dust when I was a baby. Nan was a nurse/midwife in Wittenoom and various other towns - eventually settling in Broome. She was an amazing gardener with a keen interest in bush medicine – insect bites and sores were always treated with her concoctions. This probably came about through friendships formed with Aboriginal women over the years – some of whom I recall visiting on road trips to and from Broome as a child in the 1970's.

At the age of about six, I remember staying with Flo and Frank who lived somewhere near Point Samson in a rusty corrugated iron shack. It was pretty rough when I think about it. They were generous people and meant something to my Dad as a young boy in Wittenoom. Their son Jonny was his friend. I remember they camped outside with Dad - giving up their own bed for Mum, my sister and I.

Within this body of work, I aimed for pared-back compositions about colour, open space, deep gorges, shadows, lungs/breath, silence and connection to family now deceased. Nan was lucky. She lived into her nineties despite using asbestos tailings as mulch around her Wittenoom roses. She was an optimistic, capable woman who instilled in me a great respect for Aboriginal people's knowledge, resilience and humor. She would be happy to see my work displayed beside the remarkable Tjanpi Desert Weavers - many of whom are from the Ngaanyatjarra Lands of Western Australia”.

Jane Tangney, 2018



-
JANE TANGNEY
Crocidolite Tailings - Wittenoom

40.5 x 51 cm
Oil and beeswax on linen

\$850



-
JANE TANGNEY
Kermits Pool

35 x 45 cm
Oil and beeswax on linen

\$750



-
JANE TANGNEY
Embedded

145 x 110 cm
Oil and beeswax on linen

\$4,500



-
JANE TANGNEY
Descent - Weano Gorge

145 x 110 cm
Oil and beeswax on linen

\$4,500



-

JANE TANGNEY

Wittenoom Landscape (quadriptych)

47 x 160 cm

panel 1+ 2 oil and beeswax on linen
panel 3 oil and ochre on non-asbestos
containing fibre cement
panel 4 oil and oil pastel on board

\$3,200



■
JANE TANGNEY
Gorge Country 1

100 x 95 cm
Oil and beeswax on linen

\$3,200



■
JANE TANGNEY
Gorge Country 2

57 x 57 cm
Oil and beeswax on linen

\$2,500



■
JANE TANGNEY
Gorge Country 3

57 x 57 cm
Oil and beeswax on linen

\$2,500



JANE TANGNEY
Circular Pool Karijini 1

40 x 38.5 cm
(light beech timber shadow boxed frame + glass).
Acrylic, chinagraph and oil pastel on collaged papers

\$750



JANE TANGNEY
Circular Pool Karijini 2

39.5 x 39.5 cm
(light beech timber shadow boxed frame + glass).
Acrylic, chinagraph and oil pastel on collaged papers

\$750



JANE TANGNEY
Joffre Gorge Karijini

43 x 56 cm
(light beech timber shadow box frame + glass).
Acrylic, chinagraph, ochre and oil pastel on collaged papers

\$900



JANE TANGNEY
Gorge Descent - Karijini

38 x 40 cm
(light beech timber shadow box frame + glass).
Acrylic, chinagraph and ochre on collaged papers

\$600



-
JANE TANGNEY

Cut-out, Crocidolite Mine, Wittenoom

38.5 x 32 cm

(light Beech timber shadow box frame + glass).
Acrylic, chinagraph and ochre on collaged papers

\$600



-
JANE TANGNEY

Ghost Gums - Wittenoom

37 x 46 cm

(frame as per field sketches).
Acrylic and iridescent medium on paper

\$650



JANE TANGNEY

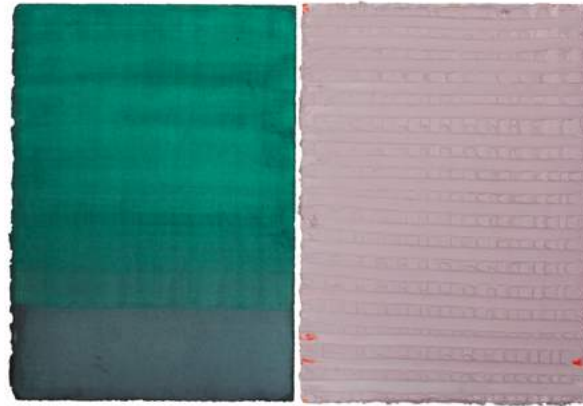
Rock Pool - Joffre Gorge

58.5 x 75cm

(deep light Ash solid timber frame + glass).

Acrylic, ochre and oil on papers

\$1,100



JANE TANGNEY

Visual overload, pause-reset 1

46.5 x 59cm

(deep light Ash solid timber frame + glass).

Acrylic and oil on papers

\$750



JANE TANGNEY

Visual overload, pause-reset 2

46.5 x 59cm

(deep light Ash solid timber frame + glass).

Acrylic and oil on papers

\$750



■
JANE TANGNEY

Field Sketch - Road, Wittenoom

39 x 46cm
(framed solid Ash timber).
Mixed media on paper

\$550



■
JANE TANGNEY

Field Sketch - Karijini National Park

39 x 46cm
(framed solid Ash timber).
Mixed media on paper

\$550



■
JANE TANGNEY

Field Sketch - Iron Ore Country

39 x 46cm
(framed solid Ash timber).
Mixed media on paper

\$550



-
JANE TANGNEY
Field Sketch - Degazetted Town, Wittenoom

39 x 46cm
(framed solid Ash timber).
Mixed media on paper

\$550



-
JANE TANGNEY
*Field Sketch - Black Shadow,
Karijini*

39 x 46cm
(framed solid Ash timber).
Mixed media on paper

\$550



Koskela Gallery

www.koskela.com.au

info@koskela.com.au

02 9280 0999

1/85 Dunning Ave, Rosebery,
NSW 2018, Australia

