

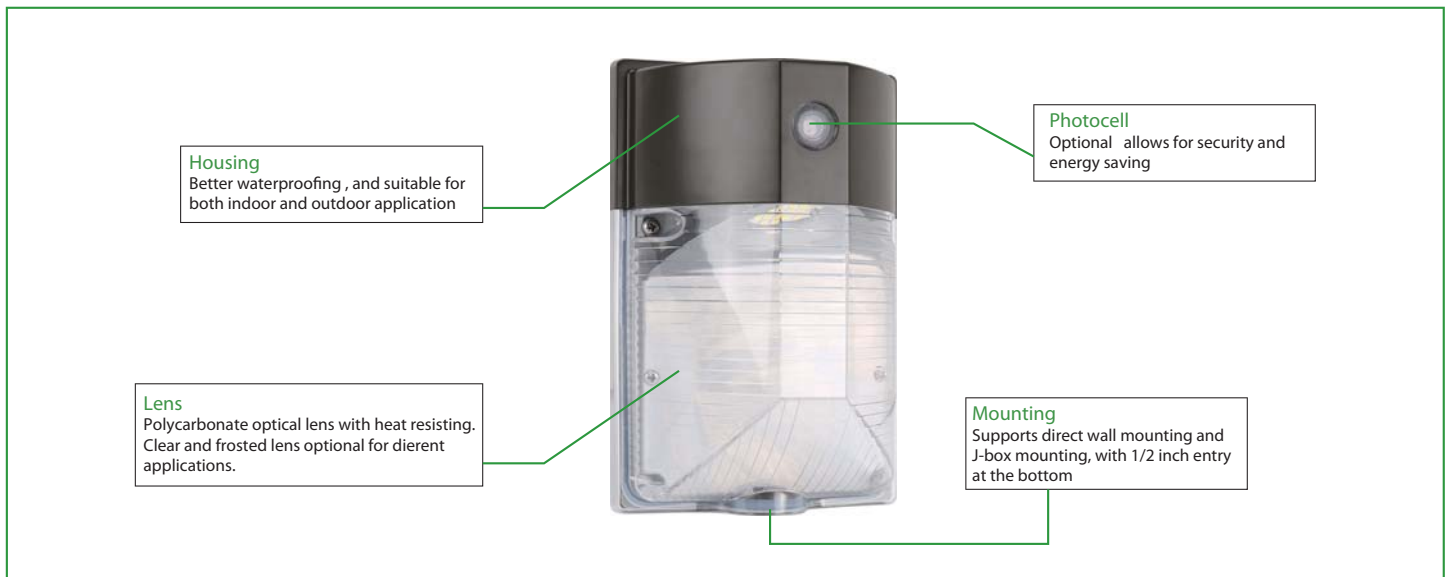


Applications:

Perfect for security, entry ways, stairways, storage and perimeter areas, as well as residential exteriors.

Features

- Sealed die-casting profile for outdoor applications
- Consumes 17W&15W to replace 120W Incandescent, 25W to replace 50W HID
- Lumen output from 1700-2700lm
- Polycarbonate optical lens with UV stabilizers for choosing
- Optional for 120V-277V photocell
- Lifespan: Estimated >50,000 Hours
- UL/cUL wet location listed



PERFORMANCE DATA

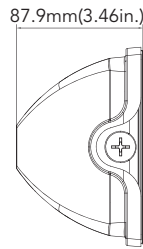
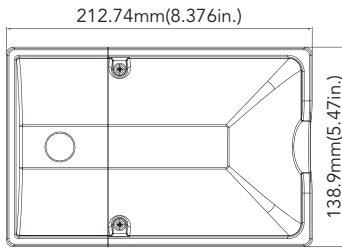
SYSTEM WATTS	VOLTAGE	LENS	4000K(70CRI)		5000K(70CRI)	
			LUMENS	LPW	LUMENS	LPW
15W	120-277VAC	Clear Lens	1700lm	113 lm/W	1750lm	117 lm/W
		Frosted Lens	1800lm	120 lm/W	1820lm	121 lm/W
17W	120-277VAC	Clear Lens	1900lm	112 lm/W	1950lm	115 lm/W
		Frosted Lens	2000lm	118 lm/W	2000lm	118 lm/W
25W	120-277VAC	Clear Lens	2550lm	102 lm/W	2600lm	104 lm/W
		Frosted Lens	2600lm	104 lm/W	2700lm	108 lm/W

ELECTRICAL DATA

Number Of Drivers	Driver Current (mA)	Nominal Power (W)	INPUT VOLTAGE (V)	CURRENT (Amps)
1	250	15	120	0.13
		15	208	0.07
		15	240	0.06
		15	277	0.05
1	250	17	120	0.14
		17	208	0.08
		17	240	0.07
		17	277	0.06
1	430	25	120	0.21
		25	208	0.12
		25	240	0.10
		25	277	0.09

DIMENSION

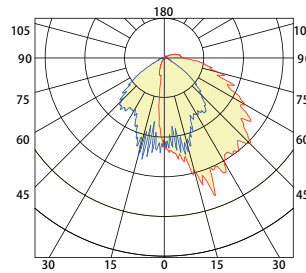
unit: inch/mm



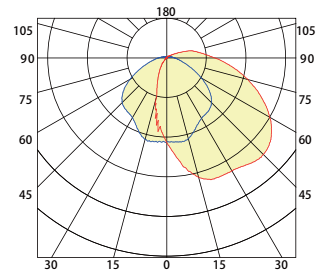
Weight:
15W/17W: 1.931lb
25W: 2.015lb

PHOTOMETRICS

Clear Lens



Frosted Lens



ORDERING GUIDE

Example: WM17W27V40KDP1F

Fixture Type	Wattage	Voltage	CCT	Finish	Photoce (Option)	Lens
<input type="checkbox"/>	<input type="checkbox"/>	<input type="checkbox"/>	<input type="checkbox"/>	<input type="checkbox"/>	<input type="checkbox"/>	<input type="checkbox"/>
WM Wall Mount	15 15W 17 17W 25 25W	27V 120-277V	30K 3000K 35K 3500K 40K 4000K 50K 5000K	D Dark Bronze B Black W White	P0 120-277V Photocell Blank Without Photocell	F Frosted Lens Blank Clear Lens