

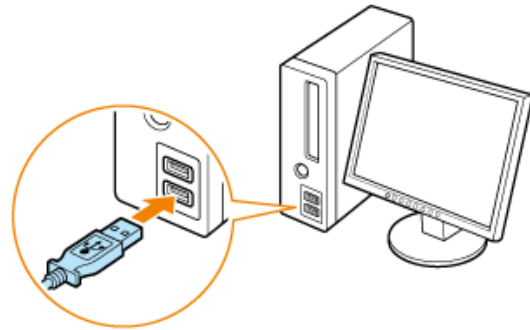
## Quick Start Guide for GasLab Development Kits

1) Download and install GasLab From the website at :

<http://www.co2meter.com/pages/downloads>

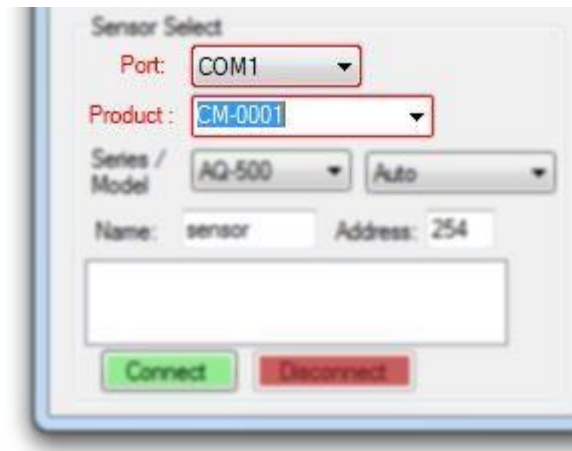


2) After you have Installed the software, connect the sensor or meter to the computer with the included USB cable.



3) Open the GasLab software and in the bottom left corner, select the port. Then Enter the product number of the device in the 'Product' field.

(If you are not sure which port is correct, unplug the sensor and see which option disappears. plug the sensor back in and select that port.)



4) Click Connect



5) Begin Making readings or using the Auto-logger function

The image shows a control interface for a sensor system, divided into two main sections: 'Sensor Commands' and 'Auto-Logging'.

**Sensor Commands:** This section contains a grid of buttons for manual data collection. The first row has three buttons labeled 'Read Co2', 'Read Tempe', and 'Read Humidit', followed by an empty button. The second row consists of four empty buttons. Below the grid are two groups of radio buttons: 'Temperature' with 'Celsius' selected and 'Farenheit' unselected; and 'Concentration' with 'PPM' selected and 'Percent' unselected.

**Auto-Logging:** This section is used for scheduling automatic data collection. It includes a 'Start Logging' button and a 'Clear Data' button. The configuration is as follows:

- 'Every' is set to 30 with a dropdown menu set to 'Seconds'.
- 'For' is set to 1 with a dropdown menu set to 'Hours'.