

The
Orchid

collection 2019

By RENÉ OF PARIS™





The Orchid

collection 2019

By RENÉ of PARIS™

INTRODUCTION

We are excited to introduce the newest collection to our René of Paris™ Brand. The Orchid Collection by René of Paris™. We have purposely chosen the best of our previous brand and brought back styles that are timeless, fresh, daring and stunning. We have also added new styles to the mix of our most popular ones. This collection is a continuation of the best styles, most appealing colors and exemplary quality you have come to expect from René of Paris™.

STYLES SHOW LEFT TO RIGHT:
Jean - Peanutbutter Swirl
Naya - Shaded Amber
Ensley - Moonstone
Rory - Creamy Dolce



HIGH HEAT STYLES



SYNTHETIC STYLES



HUMAN HAIR STYLES



The Orchid

collection 2019

By RENÉ OF PARIS™

TABLE OF CONTENTS

AVAILABLE COLORS.....	5-7
ORCHID COLLECTION.....	8-40
CHRISTINE HEAD WEAR.....	41
ACCESSORIES.....	42-43

HIGH HEAT COLORS

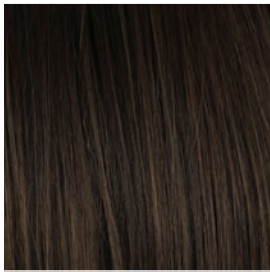


HUMAN HAIR COLORS



SYNTHETIC COLORS

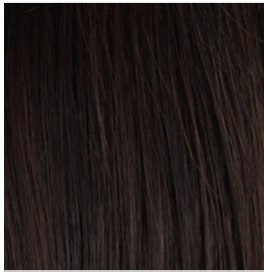
BRUNETTES



Chestnut



Chocolate Swirl



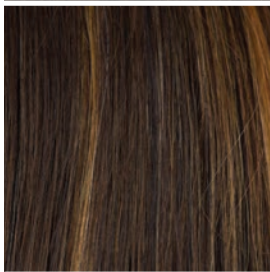
Coffee Bean



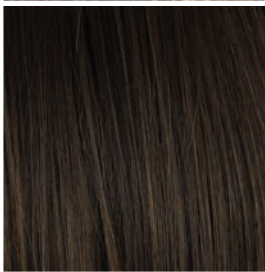
Fudge Ripple



Pecan

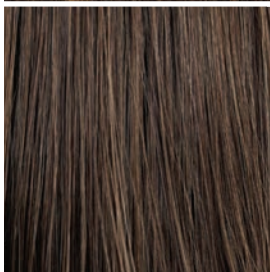


Sepia



Walnut

HYBRANT BRUNETTES



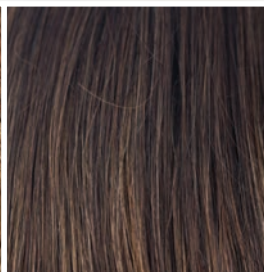
Brown Sugar



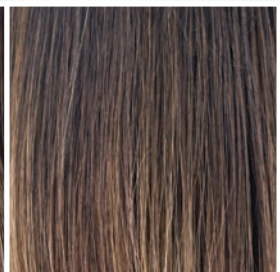
Chocolate Frost-R



Chocolate Pretzel



Coffee Latte-R



Marble Brown-R

BLONDS



Buttered Toast



Champagne Blush



Creamy Blond



Frosti Blond



Honey Wheat



Mochaccino



Pralines & Cream



Sugar Cookie



Sunny Spice



SYNTHETIC COLORS

HYBRANT BLONDS



Caffe Macchiato



Champagne-R



Coco Cream



Creamy Dolce



Creamy Toffee-R



Creme Brulee



Nutmeg-F



Peanutbutter Swirl



Shadowed Custard

REDS



Cherry Cola



Cinnamon Swirl



Ginger Snap



Rum Raisin



Tomato Bisque

HYBRANT REDS



Auburn Sugar- R



Shaded Amber

GRAYS



Sandy Silver



Silver Frost

HYBRANT GRAYS



Illumina-R



Moonstone

TRANSITION COLORS



Java Blast

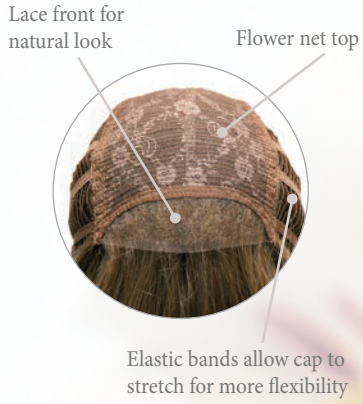


Toasted Shine



HIGH HEAT STYLES

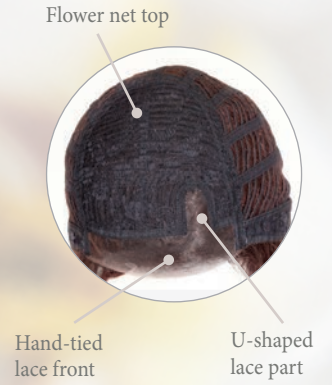
Lace Front



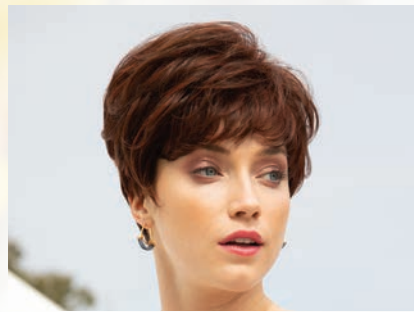
Machine Made



Lace Front/U-part



DIVA 4104



TANGO 4100



FABULOUS 4101



RED CARPET 4103



SPELLBOUND 4102



FLAWLESS 4108



PASSION 4105



SEDUCTION 4106



ENVOIOUS 4109



ATTITUDE 4107

TANGO 4100

COLOR SHOWN:

Burnt Chili

Cap: Machine Made Cap

Fringe: 3" (7.62 cm)

Crown: 6" (15.24 cm)

Nape: 1.75" (4.44 cm)

Weight: 2.47 oz (70 g)

BLONDS:

Blonde Ambition

Creme de Coco

Sunkiss

BRUNETTES:

Cafe Ole

Hot Chocolate

Molten Amber

Nocturnal

GRAYS:

Canyon Stone

REDS:

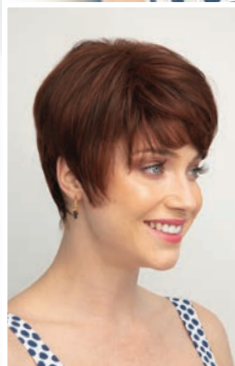
Burnt Chili

VIBRANT COLORS:

Midnight Iris

Plum Dandy

This short, trendy style has a heavy fringe and long layers that can be spiked for a grunge look or styled for a more feminine feel.





Sophisticated and powerful, this chin-length bob will demand attention. Featuring a new lace front with u-shaped part!

FABULOUS 4101

COLOR SHOWN:
Blonde Ambition

Cap: Lace Front with
U-Shaped Part

Fringe: 10" (25.4 cm)

Crown: 9" (22.86 cm)

Nape: 3-4.5" (7.62 cm -
11.43 cm)

Weight: 3.81 oz (105 g)

BLONDS:
Blonde Ambition
Creme de Coco
Sunkiss

BRUNETTES:
Cafe Ole
Hot Chocolate
Molten Amber
Nocturnal

GRAYS:
Canyon Stone

REDS:
Burnt Chili

VIBRANT COLORS:
Midnight Iris
Plum Dandy



DIVA 4104

*Make a statement in this sexy
mane of tight, touchable ringlets
that fall shoulder length.
Featuring a new lace front!*

COLOR SHOWN:

Hot Chocolate

Cap: Lace Front Cap

Fringe: 16-17" (40.64 cm -
43.18 cm)

Crown: 17" (43.18 cm)

Nape: 14-15.5" (35.56 cm -
39.37 cm)

Weight: 7.69 oz (218 g)

BLONDS:

Blonde Ambition

Creme de Coco

Sunkiss

BRUNETTES:

Cafe Ole

Hot Chocolate

Molten Amber

Nocturnal

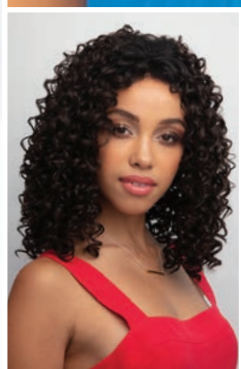
REDS:

Burnt Chili

VIBRANT COLORS:

Midnight Iris

Plum Dandy



Extra long layers frame the face of this classically beautiful style with lace front.

RED CARPET 4103

COLOR SHOWN:
Molten Amber

Cap: Lace Front Cap

Fringe: 6" (15.24 cm)

Crown: 10.5" (26.67 cm)

Nape: 13-14" (33.02 cm -
35.56 cm)

Weight: 6.84 oz (194 g)

BLONDS:
Blonde Ambition
Creme de Coco
Sunkiss

BRUNETTES:
Cafe Ole
Hot Chocolate
Molten Amber
Nocturnal

REDS:
Burnt Chili

VIBRANT COLORS:
Midnight Iris
Plum Dandy



PASSION 4105

COLOR SHOWN:

Plum Dandy

Cap: Lace Front Cap

Fringe: 8" (20.32 cm)

Crown: 12" (30.48 cm)

Nape: 9-11" (22.86 cm-
27.94 cm)

Weight: 4.97 oz (141 g)

BLONDS:

Blonde Ambition

Crème de Coco

Sunkiss

BRUNETTES:

Café Ole

Hot Chocolate

Molten Amber

Nocturnal

REDS:

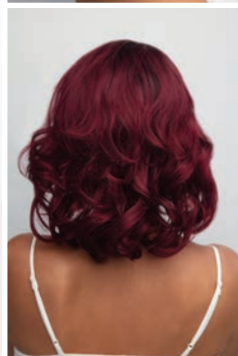
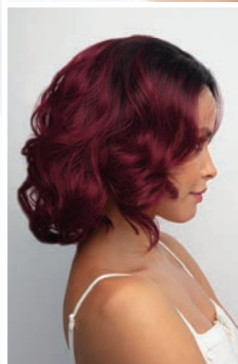
Burnt Chili

VIBRANT COLORS:

Midnight Iris

Plum Dandy

Sexy loose curls reach shoulder length in this trendy style that features a lace front.



Long, flowing layers and heavy fringe frame the face of this captivating style.

SPELLBOUND 4102

COLOR SHOWN:

Cafe Ole

Cap: Machine Made Cap

Fringe: 3.5" (8.89 cm)

Crown: 9.5" (24.13 cm)

Nape: 12" (30.48 cm)

Weight: 6.84 oz (194 g)

BLONDS:

Blonde Ambition

Creme de Coco

Sunkiss

BRUNETTES:

Cafe Ole

Hot Chocolate

Molten Amber

Nocturnal

REDS:

Burnt Chili

VIBRANT COLORS:

Midnight Iris

Plum Dandy



ATTITUDE 4107

COLOR SHOWN:

Molten Amber

Cap: Lacefront

Fringe: 7.5" (19.05 cm)

Crown: 6" - 7.75" (15.24 cm -
19.68 cm)

Nape: 6" (15.24 cm)

Weight: 4.67 oz (132.5 g)

BLONDS:

Blonde Ambition

Creme de Coco

Sunkiss

BRUNETTES:

Cafe Ole

Hot Chocolate

Molten Amber

Nocturnal

Sepia

GRAYS:

Silver Mist

REDS:

Burnt Chili

VIBRANT COLORS:

Midnight Iris

Plum Dandy

Royal Emerald

This mid-length style with loose wavy curls will definitely give your attitude a boost of confidence.



SEDUCTION 4106

Curvaceous loose curls
that fall mid-back will
surely turn heads.
Featuring crown
skin top cap.

COLOR SHOWN: Creme de Coco

Cap: Skin Crown Cap
Fringe: 3.5" (8.89 cm)
Crown: 15" (38.1 cm)
Nape: 16-18" (40.64 cm -
45.72 cm)
Weight: 6.49 oz (184 g)

BLONDS:
Blonde Ambition
Creme de Coco
Sunkiss

BRUNETTES:
Cafe Ole
Hot Chocolate
Molten Amber
Nocturnal
Sepia

REDS:
Burnt Chili

VIBRANT COLORS:
Midnight Iris
Plum Dandy



ENVIOUS 4109

COLOR SHOWN:

Royal Emerald

Cap: Lace Front/U-part

Fringe: 3" - 12" (7.62 cm -
30.48 cm)

Crown: 6" - 8.5" (15.24 cm -
21.59 cm)

Nape: 6" (15.24 cm)

Weight: 4.03 oz (114.5 g)

BLONDS:

Blonde Ambition

Creme de Coco

Sunkiss

BRUNETTES:

Cafe Ole

Hot Chocolate

Molten Amber

Nocturnal

Sepia

GRAYS:

Silver Mist

REDS:

Burnt Chili

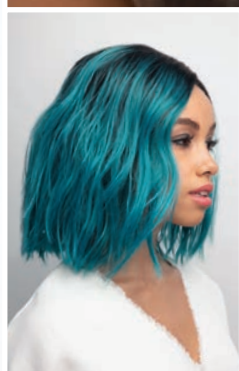
VIBRANT COLORS:

Midnight Iris

Plum Dandy

Royal Emerald

*Effortless beach waves
in an instant will surely
make everyone
ENVIOUS.*



FLAWLESS 4108

This sleek cut will transform your everyday look to a fashion forward style that will make heads turn.

COLOR SHOWN:

Silver Mist (Top)
Sunkiss (Bottom)

Cap: Lace Front/U-part

Fringe: 10" - 12" (25.4 cm - 30.48 cm)

Crown: 7.5" - 11" (19.05 cm - 27.94 cm)

Nape: 6.5" (16.51 cm)

Weight: 4.63 oz (131.5 g)

BLONDS:

Blonde Ambition
Creme de Coco
Sunkiss

BRUNETTES:

Cafe Ole
Hot Chocolate
Molten Amber
Nocturnal
Sepia

GRAYS:

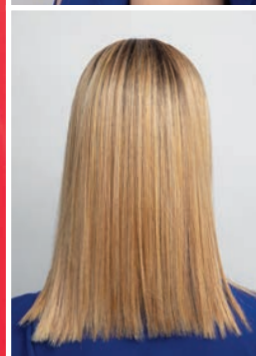
Silver Mist

REDS:

Burnt Chili

VIBRANT COLORS:

Midnight Iris
Plum Dandy
Royal Emerald



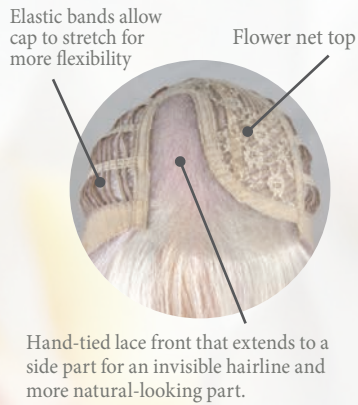


SYNTHETIC STYLES

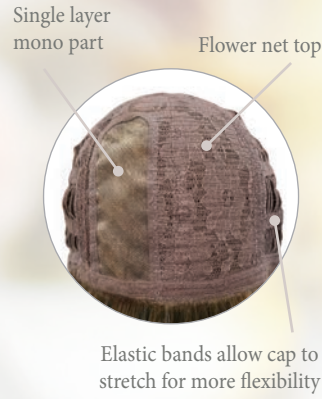
Machine Made



Lace Front/Lacepart



Mono Part



Monofilament



RORY 6529



NAYA 6530



SCORPIO PM 5024



VALENTINA 5027



ADELLE 5021



ENSLEY 6531



PETITE PORTIA 5022

3/4 Fall



LACEY 5023



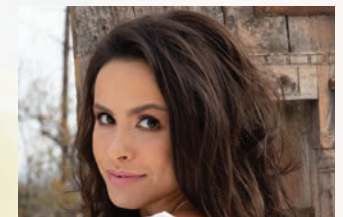
JEAN 6532



SCORPIO 5020



CARTER 6528



SYDNEY 5026



SERENA 5025

SCORPIO 5020

COLOR SHOWN:

Champagne Blush (Top)
Fudge Ripple (Bottom)

Cap: Machine Made
Open Cap

Fringe: 3.5" (8.9 cm)

Crown: 6.25" - 9.75"
(15.9 cm - 24.8 cm)

Nape: 2.25" 5.5 cm

Weight: 3 oz (85 g)

BLONDS:

Buttered Toast
Champagne Blush
Creamy Blond
Frosti Blond
Honey Wheat
Mochaccino
Pralines & Cream
Sugar Cookie
Sunny Spice

HYBRANT BLONDS:

Champagne-R
Coco Cream
Creamy Toffee-R
Creme Brulee
Nutmeg-F

BRUNETTES:

Chestnut
Chocolate Swirl
Coffee Bean
Fudge Ripple
Pecan
Sepia
Walnut

HYBRANT BRUNETTES:

Chocolate Frost-R
Coffee Latte-R
Marble Brown-R

GRAYS:

Sandy Silver

HYBRANT GRAYS:

Illumina-R

REDS:

Cinnamon Swirl
Cherry Cola
Ginger Snap
Rum Raisin
Tomato Bisque

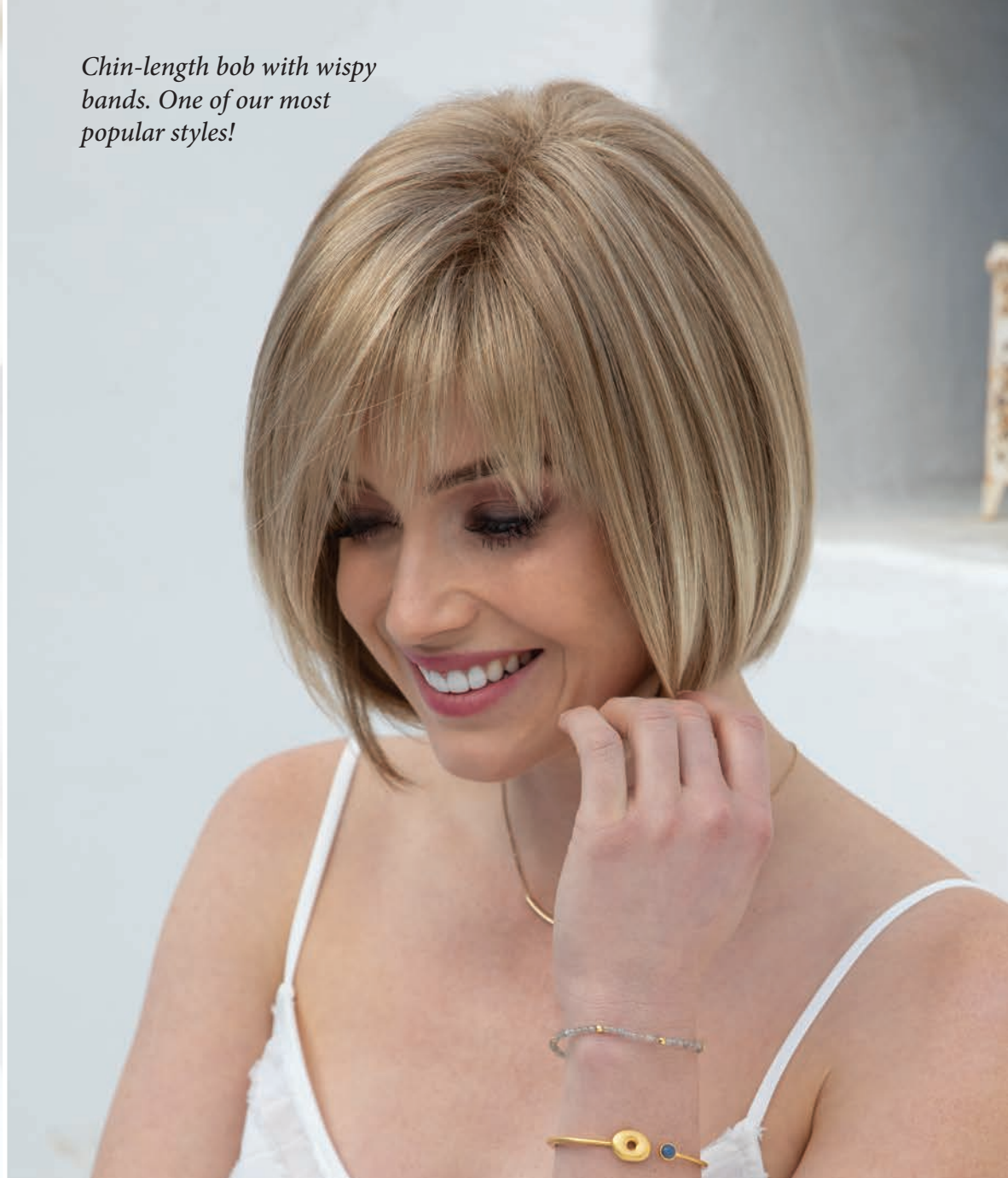
HYBRANT REDS:

Auburn Sugar-R

TRANSITION COLORS:

Java Blast
Toasted Shine

Chin-length bob with wispy bands. One of our most popular styles!



22

Gorgeous, long style with a center skin part for a very natural appearance.

LACEY 5023

COLOR SHOWN:

Rum Raisin (Top)
Sugar Cookie (Bottom)

Cap: Center Skin Top
Fringe: 3.5" (8.9 cm)
Crown: 15" - 15.75"
(38.1 - 40 cm)
Nape: 14.5" (36.8 cm)
Weight: 5 oz (142 g)

BLENDS:

Buttered Toast
Champagne Blush
Creamy Blond
Frosti Blond
Honey Wheat
Mochaccino
Pralines & Cream
Sugar Cookie
Sunny Spice

HYBRANT BLONDS:

Champagne-R
Creamy Toffee-R
Creme Brulee
Coco Cream
Nutmeg-F

BRUNETTES:

Chestnut
Chocolate Swirl
Coffee Bean
Fudge Ripple
Pecan
Sepia
Walnut

HYBRANT BRUNETTES:

Chocolate Frost-R
Coffee Latte-R
Marble Brown-R

GRAYS:

Sandy Silver

HYBRANT GRAYS:

Illumina-R

REDS:

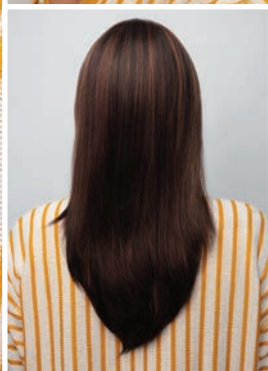
Cherry Cola
Cinnamon Swirl
Ginger Snap
Rum Raisin
Tomato Bisque

HYBRANT REDS:

Auburn Sugar-R

TRANSITION COLORS:

Java Blast
Toasted Shine



ADELLE 5021

COLOR SHOWN:

Cherry Cola

Cap: Machine Made

Open Cap

Fringe: 4.25" (10.8 cm)

Crown: 4.25" (10.8 cm)

Nape: 3.5" (9 cm)

Weight: 2.6 oz (73 g)

BLONDS:

Buttered Toast

Champagne Blush

Creamy Blond

Frosti Blond

Honey Wheat

Mochaccino,

Pralines & Cream

Sugar Cookie

Sunny Spice

HYBRANT BLONDS:

Champagne-R

Coco Cream

Creamy Toffee-R

Creme Brulee

Nutmeg-F

BRUNETTES:

Chestnut

Chocolate Swirl

Coffee Bean

Fudge Ripple

Pecan

Sepia

Walnut

HYBRANT BRUNETTES:

Chocolate Frost-R

Coffee Latte-R

Marble Brown-R

GRAYS:

Sandy Silver

HYBRANT GRAYS:

Illumina-R

REDS:

Cherry Cola

Cinnamon Swirl

Ginger Snap

Rum Raisin

Tomato Bisque

HYBRANT REDS:

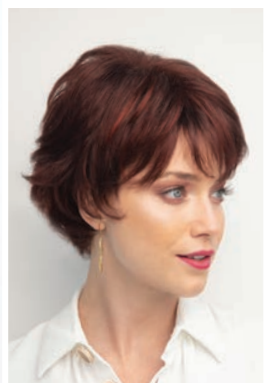
Auburn Sugar-R

TRANSITION COLORS:

Java Blast

Toasted Shine

This shake-and-go style features razored edges creating a modern, trendy look.





A sleek and sexy bob cut that you are sure to love! Monofilament cap with a left-hand part.

PETITE PORTIA 5022

COLOR SHOWN:
Chestnut (Top)
Pralines & Cream (Bottom)

Cap: Mono Part
Petite Cap
Fringe: 4" (10.16 cm)
Crown: 11" (28 cm)
Nape: 4" (10.16 cm)
Weight: 3.4 oz (96 g)

BLONDS:
Buttered Toast
Champagne Blush
Creamy Blond
Frosti Blond
Honey Wheat
Mochaccino
Pralines & Cream
Sugar Cookie
Sunny Spice

HYBRANT BLONDS:
Champagne-R
Coco Cream
Creamy Toffee-R
Creme Brulee
Nutmeg-F

BRUNETTES:
Chestnut
Chocolate Swirl
Coffee Bean
Fudge Ripple
Pecan
Sepia
Walnut

HYBRANT BRUNETTES:
Chocolate Frost-R
Coffee Latte-R
Marble Brown-R

GRAYS:
Sandy Silver

HYBRANT GRAYS:
Illumina-R

REDS:
Cherry Cola
Cinnamon Swirl
Ginger Snap
Rum Raisin
Tomato Bisque

HYBRANT REDS:
Auburn Sugar-R

TRANSITION COLORS:
Java Blast
Toasted Shine



SERENA 5025

*Gorgeous shag style with razored
layers that frame the face.*

COLOR SHOWN:

Champagne Blush

Cap: Machine Made

Open Cap

Fringe: 4.25" (11 cm)

Crown: 5.75" (14.5 cm)

Nape: 13.25" (33.5 cm)

Weight: 3.9 oz (110 g)

BLONDS:

Buttered Toast

Champagne Blush

Creamy Blond

Frosti Blond

Honey Wheat

Mochaccino

Pralines & Cream

Sugar Cookie

Sunny Spice

HYBRANT BLONDS:

Champagne-R

Coco Cream

Creamy Toffee-R

Creme Brulee

Nutmeg-F

BRUNETTES:

Chestnut

Chocolate Swirl

Coffee Bean

Fudge Ripple

Pecan

Sepia

Walnut

HYBRANT BRUNETTES:

Chocolate Frost-R

Coffee Latte-R

Marble Brown-R

GRAYS:

Sandy Silver

HYBRANT GRAYS:

Illumina-R

REDS:

Cherry Cola

Cinnamon Swirl

Ginger Snap

Rum Raisin

Tomato Bisque

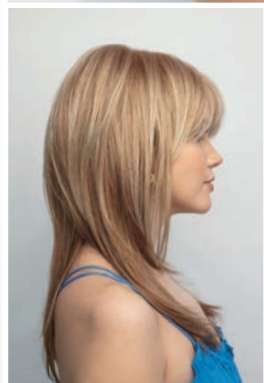
HYBRANT REDS:

Auburn Sugar-R

TRANSITION COLORS:

Java Blast

Toasted Shine





A breathable and natural looking back 3/4 partial wig that will blend with your own hairline.

SYDNEY 5026

COLOR SHOWN:
Coffee Bean

Cap: 3/4 Fall
Fringe: 10.5" (26.7 cm)
Crown: 12.5" - 14" (31.8 cm - 35.6 cm)
Nape: 17.5" (44 cm)
Weight: 5.1 oz (144 g)

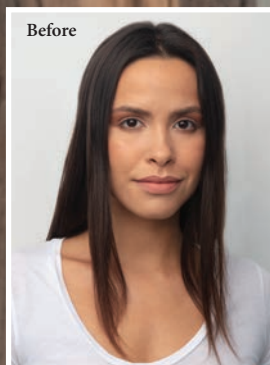
BLONDS:
Buttered Toast
Champagne Blush
Sugar Cookie

HYBRANT BLONDS:
Coco Cream
Creme Brulee

BRUNETTES:
Chestnut
Coffee Bean
Fudge Ripple
Pecan
Sepia
Walnut

REDS:
Cherry Cola
Ginger Snap
Rum Raisin

TRANSITION COLORS:
Java Blast
Toasted Shine



NAYA 6530

COLOR SHOWN:

Shaded Amber (Top)
Chocolate Pretzel (Bottom)

Cap: Lacefront
Lacepart

Fringe: 13.5" (34.29 cm)

Crown: 10" (25.4 cm)

Nape: 3.5" (8.89 cm)

Weight: 3.45 oz (98 g)

HYBRANT BLONDS:

Caffe Macchiato
Creamy Dolce
Peanut Butter Swirl
Shadowed Custard

BRUNETTES:

Sepia

HYBRANT BRUNETTES:

Brown Sugar
Chocolate Pretzel

GRAYS:

Silver Frost

HYBRANT GRAYS:

Moonstone

HYBRANT REDS:

Shaded Amber

*A bold A-line cut with
sexy loose curls that
will draw attention
to your best facial
features.*



CARTER 6528

*Lacefront pixie cut
with side swept bangs
and tapered nape.*

COLOR SHOWN:
Creamy Dolce

Cap: Lacefront
Fringe: 4.75" (12.06 cm)
Crown: 5" (12.7 cm)
Nape: 1.75" (4.44 cm)
Weight: 1.97 oz (56 g)

HYBRANT BLONDS:
Caffe Macchiato
Creamy Dolce
Peanut Butter Swirl
Shadowed Custard

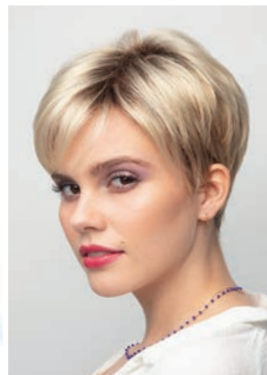
BRUNETTES:
Pecan
Walnut

HYBRANT BRUNETTES:
Chocolate Pretzel

GRAYS:
Silver Frost

HYBRANT GRAYS:
Moonstone

HYBRANT REDS:
Shaded Amber



ENSLEY 6531

COLOR SHOWN:

Peanut Butter Swirl (Top)
Moonstone (Bottom)

Cap: Lacefront
Lacepart

Fringe: 6" (15.24 cm)

Crown: 13" (33.02 cm)

Nape: 14" (35.569 cm)

Weight: 5.64 oz (160 g)

HYBRANT BLONDS:

Caffe Macchiato
Creamy Dolce
Peanut Butter Swirl
Shadowed Custard

BRUNETTES:

Sepia

HYBRANT BRUNETTES:

Brown Sugar
Chocolate Pretzel

GRAYS:

Silver Frost

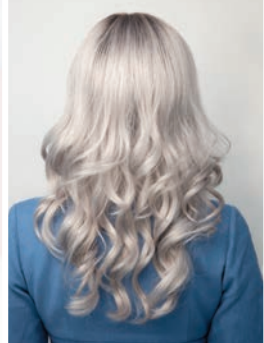
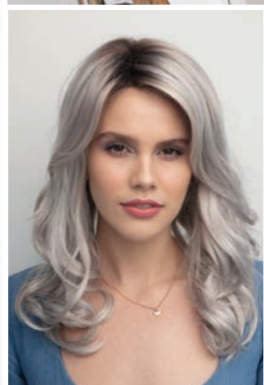
HYBRANT GRAYS:

Moonstone

HYBRANT REDS:

Shaded Amber

*Salon blow-out inspired
style with long side swept
bangs and soft curls.*



JEAN 6532

*Sassy bob with soft curls
and natural side-part.*

COLOR SHOWN:

Shadowed Custard (Top)
Peanut Butter Swirl (Bottom)

Cap: Lacefront
Lacepart

Fringe: 8.75" (22.22 cm)

Crown: 8.75" (22.22 cm)

Nape: 3" (7.62 cm)

Weight: 3.17 oz (90 g)

HYBRANT BLONDS:

Caffe Macchiato
Creamy Dolce
Peanut Butter Swirl
Shadowed Custard

BRUNETTES:

Pecan
Walnut

HYBRANT BRUNETTES:

Chocolate Pretzel

GRAYS:

Silver Frost

HYBRANT GRAYS:

Moonstone

HYBRANT REDS:

Shaded Amber



RORY 6529

COLOR SHOWN:

Caffe Macchiato (Top)
Silver Frost (Bottom)

Cap: Machine Made

Fringe: 4" (10.16 cm)

Crown: 14.25" (36.19 cm)

Nape: 8" (20.32 cm)

Weight: 5.46 oz (155 g)

HYBRANT BLONDS:

Caffe Macchiato
Creamy Dolce
Peanut Butter Swirl
Shadowed Custard

BRUNETTES:

Sepia

HYBRANT BRUNETTES:

Brown Sugar
Chocolate Pretzel

GRAYS:

Silver Frost

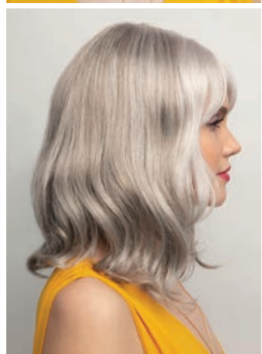
HYBRANT GRAYS:

Moonstone

HYBRANT REDS:

Shaded Amber

This mid-length style has soft curls and bangs that can worn either straight or swept to one side.



VALENTINA 5027

Sultry boycut with all-over layering for light body and volume.

COLOR SHOWN:

Pecan

Cap: Mono Cap

Fringe: 2.75" (6.7 cm)

Crown: 3.5" (8.9 cm)

Nape: 2" (5 cm)

Weight: 1.9 oz (53 g)

BLONDS:

Buttered Toast

Champagne Blush

Pralines & Cream

Sugar Cookie

Sunny Spice

HYBRANT BLONDS:

Coco Cream

Creme Brulee

BRUNETTES:

Chestnut

Coffee Bean

Fudge Ripple

Pecan

Sepia

Walnut

HYBRANT BRUNETTES:

Brown Sugar

REDS:

Cherry Cola

Ginger Snap

Rum Raisin

Tomato Bisque

TRANSITION COLORS:

Java Blast

Toasted Shine



SCORPIO PM

5024

COLOR SHOWN:

Crème Brûlée

Cap: Lace Front with
Mono Part

Fringe: 3.5" (8.89 cm)

Crown: 6.25"-9.75" (15.9 cm
- 24.8 cm)

Nape: 2.25" (5.5 cm)

Weight: 3 oz (85 g)

BLONDS:

Buttered Toast
Champagne Blush
Creamy Blond
Frosti Blond
Honey Wheat
Mochaccino
Pralines & Cream
Sugar Cookie
Sunny Spice

HYBRANT BLONDS:

Champagne-R
Coco Cream
Creamy Toffee-R
Crème Brûlée
Nutmeg-F

BRUNETTES:

Chestnut
Chocolate Swirl
Coffee Bean
Fudge Ripple
Pecan
Sepia
Walnut

HYBRANT BRUNETTES:

Chocolate Frost-R
Coffee Latte-R
Marble Brown-R

GRAYS:

Sandy Silver

HYBRANT GRAYS:

Illumina-R

REDS:

Cherry Cola
Cinnamon Swirl
Ginger Snap
Rum Raisin
Tomato Bisque

HYBRANT REDS:

Auburn Sugar-R

TRANSITION COLORS:

Java Blast
Toasted Shine

*Our most popular style
now in a lace front with
monofilament part.*





STYLES SHOW LEFT TO RIGHT:
Flawless - Sunkiss
Scorpio - Champagne Blush



HUMAN HAIR STYLES

Natural-looking and comfortable wig collection designed for women who have experienced hair loss or have a sensitive scalp. These quality, human hair* wigs feature a single-layer, hand-tied monofilament top that allows your own skin tone to show through for a more realistic look.

Mono Cap

Hand-tied monofilament cap allowing multi-directional styling

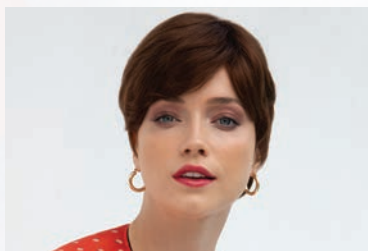


Hairline fusion technology with minimal lace front

Elastic bands allow cap to stretch for more flexibility

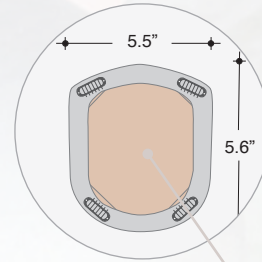


LILY 8705



KRIS 8704

Topper



Hand-tied monofilament base



DISCREET TOPPER 8703

LILY 8705

A monofilament top wig with a chic side fringe creates a modern, classy look.

COLOR SHOWN:

Moonlight Blonde Root

Cap: Mono Cap

Fringe: 7" - 8" (17.8 cm - 20.3 cm)

Crown: 9" - 13" (23 cm - 33 cm)

Nape: 13" (33 cm)

Weight: 5.5 oz (157 g)

BLONDS:

Golden Wheat

HYBRANT BLONDS:

Moonlight Blonde Root

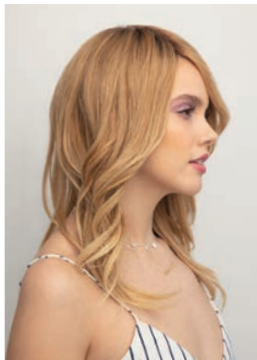
BRUNETTES:

Brown Spice

Cappucino

Dark Chocolate

Honey Brown





Medium-length,
monofilament top
piece made with
human hair

DISCREET TOPPER 8703

COLOR SHOWN:
Coffee Bean

Cap: monofilament base

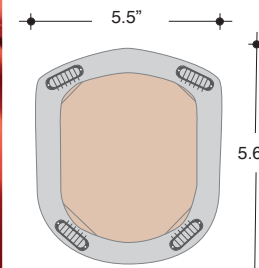
Base Size: 5.6" x 5.5" (14.3 cm
x 14 cm)

Hair Length: 6"- 12" (12.2 cm
- 30.5 cm)

Weight: 5.5 oz (157 g)

HYBRANT BLONDE:
Moonlight Blonde Root

BRUNETTES:
Cappuccino
Dark Chocolate
Brown Spice
Honey Brown



KRIS 8704

COLOR SHOWN:

Brown Spice

Cap:

Mono Cap

Fringe: 4" (10.16 cm)

Crown: 4" (10.16 cm)

Nape: 2.5" (6.4 cm)

Weight: 2.6 oz (73 g)

BLONDS:

Golden Wheat

HYBRANT BLONDS:

Moonlight Blonde Root

BRUNETTES:

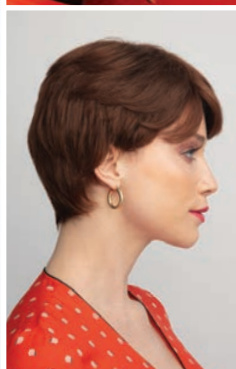
Cappucino

Dark Chocolate

Brown Spice

Honey Brown

This sophisticated, tapered style features a monofilament top for a natural look.





Christine[™]
HEADWEAR



Aderans Hair Goods is now
the sole USA distributor
of Christine Headwear[™]
turbans and scarves!

Contact Your Sales Consultant
800.353.7363



ACCESSORIES



8128
18" WHITE
MANNEQUIN



8129
18" GRAY
MANNEQUIN
with logo



8130
18" BLACK
MANNEQUIN
with logo



8131
18" WHITE
MANNEQUIN
with logo



8123
21" MANNEQUIN



8119
17" MANNEQUIN



9580
WIG CAP
Available Colors:
Beige, Black,
and Brown



9581
WIG LINER
Open Mesh
Available Colors:
Beige, Black, and Brown



965
WIRE BRUSH



9584
ROP WIG STAND



9560
STYROFOAM HEAD
12pc package



The
Orchid

By RENÉ of PARIS™

The color swatches let you
see your perfect hair match.

5019
SWATCHES



Convenient "snap together" stand for wig storage or service.

9582 WIG STAND PACKAGE

3pc package contains colors: Black, Blue & Gray

Sold separately: **9583 BLACK, BLUE, GRAY**



RENÉ OF PARIS™

MAINTENANCE TOOLS



9950
ROP Prepare Shampoo
8 oz.

9953
ROP Dual Conditioner
8 oz.

9951
ROP Revive Liquid Enhancement
8 oz.

9952
ROP Protect Holding Spray
8 oz.

Rene of Paris Prepare Shampoo

This luxurious shampoo is formulated with the ultimate in moisture replenishing cleansers. Rene of Paris Prepare Shampoo helps maintain the smoothness, strength and polish of your wig/hairpiece.

The gentle combination of plant and vegetable extracts, along with natural essential oils and vitamins, provides a gentle but thorough cleansing of your wig/hairpiece. The results will revolutionize how you feel.

Rene of Paris Dual Conditioner

Rene of Paris Conditioner for synthetic wigs revitalizes dull hair leaving it softer, shinier and easy to manage.

Rene of Paris Revive Liquid Enhancement™

The finest advanced liquid developed for synthetic fiber hair. Rene of Paris Revive Liquid Enhancement will revive your wig/hair piece and give it the brand new feel.

Not only helps eliminate frizz while adding luster, texture and volume, but also protects your wig/hairpiece from the daily stresses.

Rene of Paris Protect Holding Spray

The final stop in maintaining and styling your wig/hairpiece. This holding spray adds shine while gently, yet firmly, holding your desired style.

We are delighted that you have chosen to become one of our valued customers. We appreciate your business as well as any inquiries regarding the following:

APPLICABILITY:

1. The following terms and conditions ("Terms") are the only terms which govern the sale of the goods ("Goods") by Aderans Hair Goods, Inc. ("AHG") to its customers (each referred to hereafter as "Buyer," or "You"). Notwithstanding anything herein to the contrary, if a written contract signed by both parties is in existence covering the sale of the Goods covered hereby, the terms and conditions of said contract shall prevail to the extent they are inconsistent with these Terms.

2. These Terms, together with the applicable invoice and the Statement of Policy defined below (collectively, this "Agreement"), comprise the entire agreement between the parties, and supersede all prior or contemporaneous understandings, agreements, negotiations, representations and warranties, and communications, both written and oral. These Terms prevail over any of Buyer's general terms and conditions of purchase regardless whether or when Buyer has submitted its purchase order or such terms. Acceptance of Buyer's purchase order or fulfillment of Buyer's order does not constitute acceptance of any of Buyer's terms and conditions and does not serve to modify or amend these Terms.

ACCEPTANCE OF PURCHASE ORDER. AHG has the right, in its sole discretion, to accept or reject any purchase order issued by You. AHG may accept any purchase order by confirming the order (whether by written confirmation, invoice or otherwise) or by delivering the Goods, whichever occurs first. No purchase order is binding on AHG unless accepted by AHG.

PRICES. You shall purchase the Goods from AHG at the prices set forth in AHG's price list in effect at the time that AHG accepts Your purchase order ("Prices"). Prices are exclusive of, and You are solely responsible for, and shall pay, any and all taxes, with respect to, or measured by, the manufacture, sale, shipment, use or Price of the Goods; provided, however, that You shall not be responsible for any taxes imposed on, or with respect to, AHG's income, revenues, gross receipts, personnel or real or personal property or other assets.

PAYMENT TERMS: AHG accepts payment by Visa, MasterCard, AMEX, Discover, money order, wire transfer and COD. Upon approval, credit terms may be available.

CREDIT PURCHASES: If You wish to apply for an AHG 30-day open account (NET -30), contact Your AHG sales representative and request a credit application.

SHIPPING/HANDLING: You will pay for all shipping charges and insurance costs. AHG offers shipping via UPS next day air, 2-3 day air, and ground. There is a handling charge of \$1.00 for all orders. For each purchase order accepted by AHG, AHG may, in its sole discretion, without liability or penalty, make partial shipments of Goods to You. Each shipment will constitute a separate sale and You will pay for the units shipped whether such shipment is in whole or partial fulfillment of a purchase order.

TRANSFER OF TITLE & RISK OF LOSS: Title passes to You upon delivery of the Goods to the address You specified in the purchase order. Risk of loss or damage to the Goods passes to You upon AHG's tender of such units to the carrier at AHG's location in Chatsworth, CA.

STATEMENT OF POLICY: You must comply with the Statement of Policy and Guidelines for Using Aderans' Trademarks and Copyrights (the "Statement of Policy") which was provided to You and

which may be modified or updated by AHG from time to time in its sole discretion.

RETURN POLICY: Returns will not be accepted unless pre-authorized by (AHG). Requests must be made within 30 days from receipt of Goods. Upon approval and receipt of the authorization for return label, Goods meeting the following conditions may be returned for an exchange or direct credit to Your account (freight prepaid by Buyer). NO cash refunds! If an item is to be exchanged, new shipping and handling charges will be added.

1. A copy of Your invoice must accompany all returns. The authorization for return label must be placed on the outside of the box (complete with the authorization number) and Your return address. If not, the box will be refused.

2. Returned Goods must be in MINT CONDITION. Mint condition is defined by AHG as: no missing tags or labels, the hair net is not removed, item(s) are not combed/fluffed or tried on by a customer. All returns must be in original shipping box. There is a restocking fee of \$10.00 for EACH piece returned.

3. AHG has carefully designed its product packaging to protect the product integrity. AHG is not responsible for damage to or problems with any product where the product and/or shipment packaging has been changed per Your request. No returns will be accepted under these conditions.

4. Shipping and handling fees are non-refundable.

5. Any DISCONTINUED items are not returnable.

6. AHG is not responsible for lost return packages.

It is recommended that You keep proper Proof-of-Delivery. Goods not meeting the above stipulations will be refused. AHG will not accept returns more than 30 days after receipt of Goods. If there is a factory defect or an incorrectly shipped item due to our error, a full exchange or credit will be applied directly to Your account. Note: If an item is returned for a "defective" credit and upon examination found not to be defective, credit will only be given for the item's original price (providing it still meets the above standards), and a \$10.00 restocking charge will be applied. Any additional product not authorized for return will be sent back.

NOTE: Colors shown in this catalog may not reflect actual color of product. RENÉ OF PARIS is a trademark or registered trademark of Aderans Hair Goods, Inc. and/or Aderans Co., Ltd. in the United States and other countries.

CHRISTINE HEADWEAR and the Christine Headwear logo are trademarks and/or registered trademarks of The Headwear Company in the United States and other countries.





The
Orchid
collection
By RENÉ OF PARIS™

2019 THE ORCHID COLLECTION
BY RENE OF PARIS

Distributed by Aderans Hair Goods
9135 Independence Avenue
Chatsworth, CA 91311 USA
Toll Free: 800.353.7363
Fax: 818.885.0134

FRONT COVER: SCORPIO IN CHAMPAGNE-R
BACK COVER: FLAWLESS IN SILVER MIST

www.reneofparis.com

FOLLOW US ON:



ROP ORCHID CATALOG 2019



2108886