

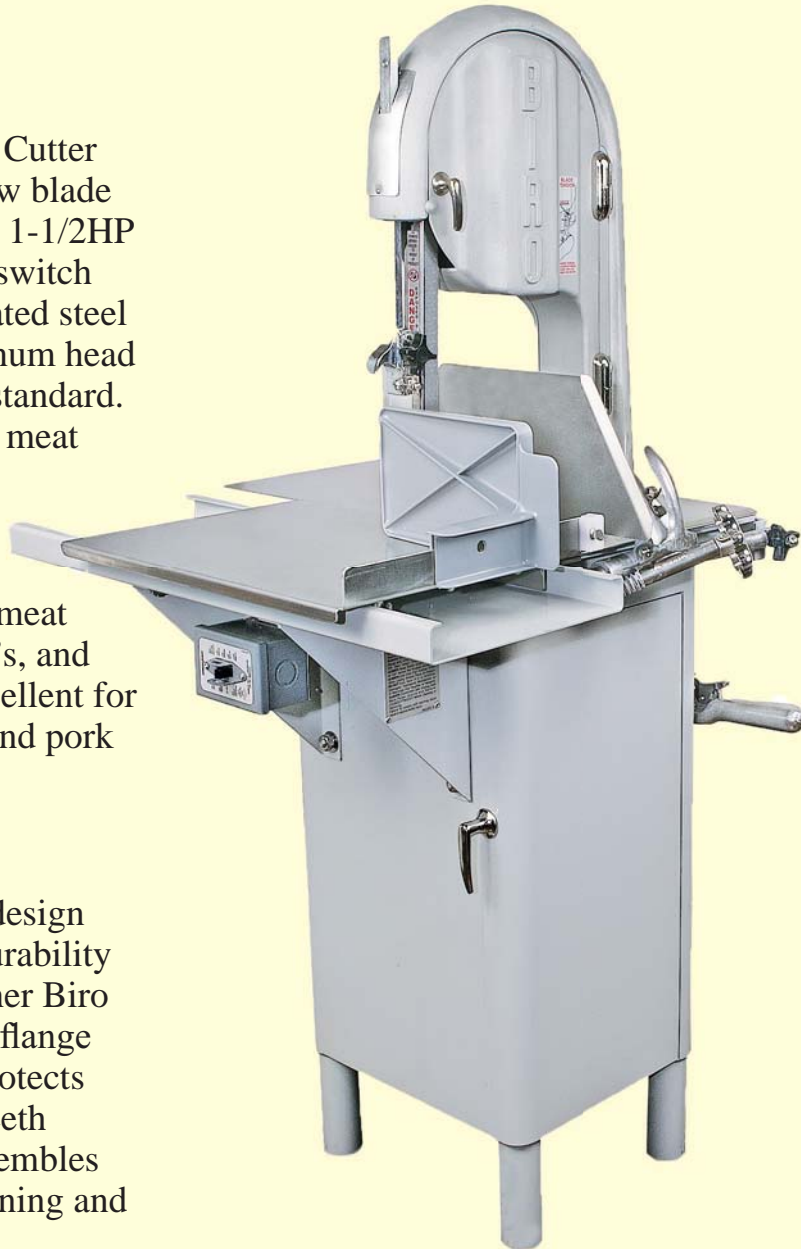


Known for Reliability
Since 1921

The Biro Model 11 Power Cutter with 10" Dia. (254mm) saw blade wheels, is equipped with a 1-1/2HP (1.1kw) motor and toggle switch as standard. A powder coated steel base structure, with aluminum head and door structure is also standard. The removable platter and meat carriage are stainless steel.

Designed for use in small meat shops, grocery stores, deli's, and restaurants, this saw is excellent for boneless meats, chicken, and pork cutting.

This saw exhibits proven design concepts along with the durability and reliability found in other Biro Power Cutters. The single flange saw blade wheel design protects the blade's tooth set and teeth tips. The Model 11 disassembles without tools for easy cleaning and is economical to use.



Model 11



MODEL SPECIFICATIONS

MODEL: 11 Power Cutter

CONSTRUCTION: Steel plate powder-coated base, aluminum head.

MOTORS:

HP	KW	TYPE	VOLTS	AMPS	CYCLE	PH	STATUS
1 ½	1.1	TE	115/208-230	17.4/7.0-8.7	60	1	STD
1 ½	1.1	TE	208-230/460	4.4-4.0/2.0	60	3	STD
1 ½	1.1	TE	380	2.4	50	3	STD
1 ½	1.1	HH	220	6.8	50	1	EC

TE = Totally Enclosed STD = Standard EC = Extra Cost HH = High Humidity

STANDARD FEATURES: One saw blade • safety pusher plate • safety wall poster • operating and safety manual.

SWITCH: Toggle, standard, 2HP rated, placed conveniently in front.

HEAD AND DOOR: Aluminum, entire assembly removable.

BASE STRUCTURE: Welded steel plate, powder-coated finish.

BLADE STANDARD: Hard tooth .020 inch (.4mm) thick, four teeth per inch, 5/8" (15.9mm) wide, 78" (1981mm) long, one supplied with each saw.

BLADE SPEED: 3000 feet (914m) per minute approximate, for both 50 and 60 cycle operation.

BLADE GUIDES: Upper and lower blade back-up long life carbide insert guide assemblies, removable.

BLADE TENSION: Ratchet arm and cam against pound-tested spring and tension spring gauge.

BLADE WHEELS: 10" (25.4cm) cast iron, chrome nickel plating, upper wheel assembly lifts out.

BEARINGS: Heavy duty tapered roller bearings in upper wheel hub and lower bearing housing.

CATCH PAN: Poly, extra deep, rounded corners, sealed off from other parts of base, accessible through base hinged door.

CLEANING UNIT: Long life carbide guide, steel saw cleaners, removable as a unit for easy cleaning (assembly also adjustable as a unit).

DRIVE SYSTEM: Non-slip silent v-belt, tension adjustable.

LEGS: Straight (with floor pads), non adjustable.

MEAT CARRIAGE: Stainless steel with nylon guides and steel bearings.

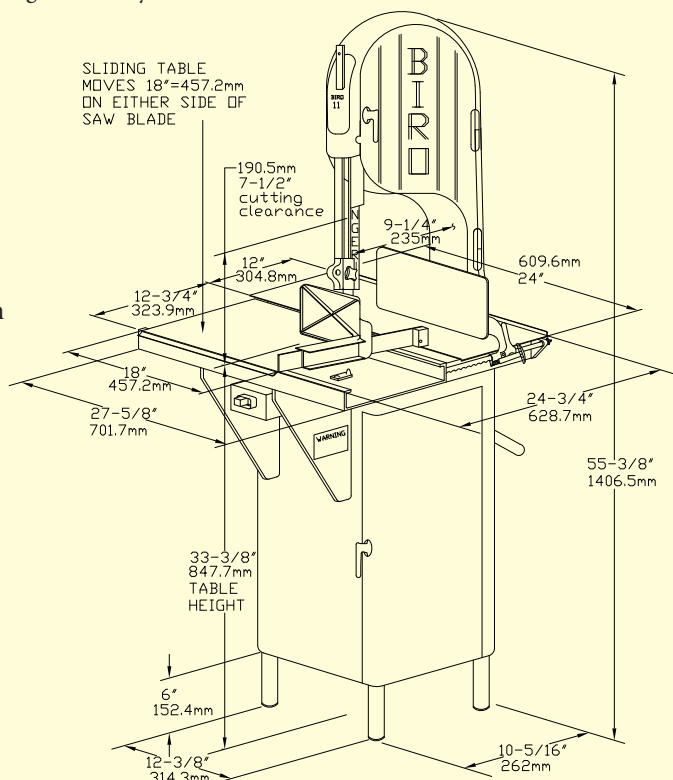
MEAT GAUGE PLATE: Stainless steel faced, adjustable from 1/16" (1.59mm) to 6-1/2" (165mm), locks in position, can be taken out of gear, entire assembly removable for cleaning.

MOTOR COMPARTMENT: Sealed off from meat contact areas, easily accessible through removable panel door.

PLATTER: All stainless steel, held in place with two push-pull hold down stainless steel rods.

SAFETY PUSHER PLATE: Standard, storage clip provided.

OPTIONS (EC): Power cord and plug • totally enclosed motor • watertight magnetic switch with thermal overload and under voltage protection.



CERTIFICATIONS: C.S.A. on 115-60-1, U.L., N.S.F.

WEIGHT: Uncrated: 256 lbs. (116 kg) approximate.

Carton packed: 308 lbs. (140 kg) approximate.

DIMS. CRATED: L=32" (81.3cm), W=40" (101.6cm), H=41" (104cm)

BIRO MANUFACTURING COMPANY

1114 WEST MAIN STREET

MARBLEHEAD, OH 43440-2099 U.S.A.

Phone: (419) 798-4451 <http://www.birosaw.com>

Fax: (419)798-9106 sales@birosaw.com

ITEM NO.: LIT-11-007

FORM NO.: LIT-11-007-3-14-39-B

All specifications contained herein are subject to change without notification.

Service is available from locations worldwide