



RUFFWEAR®

2019 SPRING/SUMMER DEALER WORKBOOK



IN THIS TOGETHER

This season, we tapped into the core of what drives us: curiosity, collaboration, learning by doing. Innovating. Failing faster. Cultivating relationships. Offering solutions to dogs and their human companions that will enhance their lives. And for the first time, we focused solely on the needs of working dogs and their handlers.

We learned that having a vision doesn't mean being able to see with your eyes. It means working together, collaborating and sharing, and taking steps according to what feels right. Sometimes, setting out on a journey means more than knowing what the destination will be. We're excited to share our journey with you, along with stories about the people and dogs involved, and the products that came about as a result.

Pictured: Nancy & Abbie, Ruffwear friends and product testers



INSPIRED BY WORKING DOGS

Our Audible Beacon™ and Huck-a-Cone™ are two of our newest pieces of gear designed for working dogs and available to everyone.



Page 73



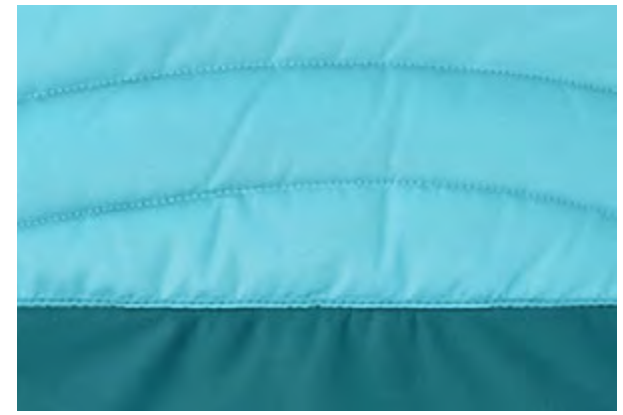
Page 76

APPAREL

Wherever your trails take you, we've got apparel that will keep your furry pal comfortable. Designed from a dog's perspective and using performance materials, our dog jackets are ready for anything.

#mydogismy

Inspiration





WORKING HARD AND STAYING COOL

The Jet Stream™ provides efficient cooling for hard-working dogs. Its performance design hugs the body and fits underneath harnesses.



Swamp Cooler™ Vest

Provides protection from the sun and cooling through evaporation. Leash portal allows the Swamp Cooler to be worn over most harnesses.

KEY FEATURES:

- Three layer construction for maximum cooling:
 - Wicking outer layer reflects heat and facilitates evaporation, rated to UPF 50+
 - Absorbent middle layer stores water for evaporation
 - Comfortable inner layer transfers cooling effect to the dog
- Leash portal on back is compatible with most harnesses
- Vest style provides good coverage for maximum shade with side release buckles for easy on/off
- Reflective trim for low-light visibility and light loop for attaching The Beacon™

COLOR: Graphite Gray



Jet Stream™ Vest

Efficiently cools dogs during light and fast, high-intensity adventures through shading and evaporative cooling.

KEY FEATURES:

- Lightweight spandex back panel rated to UPF 50+
- Three-layer construction chest panel cools the core:
 - Wicking outer layer facilitates evaporation
 - Absorbent middle layer stores water for evaporation
 - Comfortable inner layer transfers cooling effect to the dog
- Vest cut for fast and light athletic endeavors
- Zippered closure for high-performance fit

COLORS: Blue Lagoon | Salamander Orange

Girth:	XXS	XS	S	M	L	XL
	13-17 in 33-43 cm	17-22 in 43-56 cm	22-27 in 56-69 cm	27-32 in 69-81 cm	32-36 in 81-91 cm	36-42 in 91-107 cm

Girth:	XXS	XS	S	M	L	XL
	13-17 in 33-43 cm	17-22 in 43-56 cm	22-27 in 56-69 cm	27-32 in 69-81 cm	32-36 in 81-91 cm	36-42 in 91-107 cm

RUFFWEAR COOLING GEAR TAKES THE HEAT



88° F / 31° C



Pointer Mix

At Ruffwear, we believe a happy dog is a dog outside and that our products should perform seamlessly in the outdoors. With the help of Ruffwear dog Ellie and FLIR® thermal imaging technology, we put our cooling gear to the test.

Jet Stream™



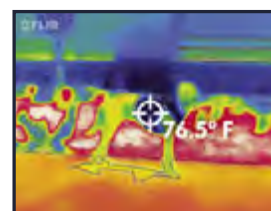
Before



106° F / 41° C

Dog's external temperature **before** adding the Jet Stream.

After



76.5° F / 24.7° C

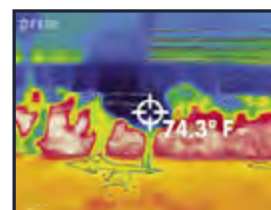
Vest temperature **after** adding the wet Jet Stream.

Swamp Cooler™



106° F / 41° C

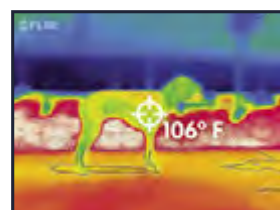
Dog's external temperature **before** adding the Swamp Cooler.



74.3° F / 23.5° C

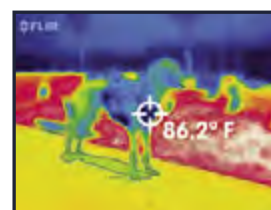
Vest temperature **after** adding the wet Swamp Cooler.

Core Cooler™



106° F / 41° C

Dog's external temperature **before** adding the Core Cooler.



86.2° F / 30.1° C

Vest temperature **after** adding the wet Core Cooler.



Vert™ Jacket

Protection from the elements with fleece lining for warmth during work and play. Leg loops keep the jacket in place and the leash portal allows the Vert to be worn over most harnesses.

KEY FEATURES:

- 70D nylon shell fabric is windproof, waterproof, and breathable
- Warm, comfortable polyester fleece lining with anti-pilling coating and DWR finish
- Oversized storm collar folds up for additional weather protection
- Leash portal on back is compatible with most harnesses
- Side release buckles for easy on/off
- Leg loops provide secure fit option in windy conditions
- Reflective accents for low-light visibility and light loop for attaching The Beacon™

COLORS: Blue Atoll | Sockeye Red



Sun Shower™ Jacket

Weather-resistant rain jacket with non-insulated waterproof fabric ideal for use in warm climates and can be worn over insulating layers for cold climates.

KEY FEATURES:

- PVC-free waterproof fabric
- Oversized storm collar folds up for additional weather protection
- Side release buckles for easy on/off
- Reflective accents for low-light visibility and light loop for attaching The Beacon™

COLORS: Meadow Green | Blue Dusk | Alpenglow Pink

Girth:	XXS	XS	S	M	L	XL
	13-17 in 33-43 cm	17-22 in 43-56 cm	22-27 in 56-69 cm	27-32 in 69-81 cm	32-36 in 81-91 cm	36-42 in 91-107 cm

Girth:	XXS	XS	S	M	L	XL
	13-17 in 33-43 cm	17-22 in 43-56 cm	22-27 in 56-69 cm	27-32 in 69-81 cm	32-36 in 81-91 cm	36-42 in 91-107 cm



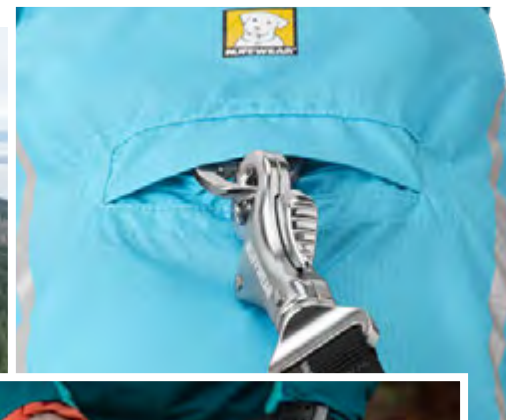
Wind Sprinter™ Jacket

Ultralight, durable nylon ripstop fabric blocks wind while a DWR finish repels light precipitation. Leg loops keep the jacket in place and the leash portal allows the Wind Sprinter to be worn over most harnesses.

KEY FEATURES:

- Ultralight 50D nylon ripstop fabric is wind resistant
- DWR finish repels water
- Oversized storm collar converts to stuff sack for compact stow
- Leash portal on back is compatible with most harnesses
- Side release buckles for easy on/off
- Leg loops provide secure fit option in windy conditions
- Reflective accents for low-light visibility and light loop for attaching The Beacon™

COLOR: Blue Atoll



UNPREDICTABLE AT BEST

When the next gust of wind might launch you into space, when a cloud moves across the sun and the temperature plunges, or when, suddenly, the sun returns with warmth, calm, and brightness. These are the times when the Wind Sprinter shines. This packable, ultralight jacket with leg loops and a leash portal will help you embrace the unpredictability inherent in any adventure.



Girth:	XXS	XS	S	M	L	XL
	13-17 in 33-43 cm	17-22 in 43-56 cm	22-27 in 56-69 cm	27-32 in 69-81 cm	32-36 in 81-91 cm	36-42 in 91-107 cm



Fernie™ Jacket

Technical sweater with fleece interior provides cozy warmth on clear, cold days and can be worn alone or layered underneath other coats for additional warmth.

KEY FEATURES:

- Sweater knit is quick drying and provides warmth without bulk
- Sleeved style for core heat retention
- Zippered closure for high-performance fit
- Reflective trim for low-light visibility and light loop for attaching The Beacon™

COLORS: Hemlock Green | Larkspur Purple | Canyonlands Orange



Climate Changer™ Jacket

Versatile recycled polyester fleece jacket provides cozy warmth on clear, cold days and can be worn alone or layered underneath other coats for additional warmth.

KEY FEATURES:

- 75% recycled/recyclable polyester fleece is quick-drying and provides warmth without bulk
- Sleeved style for core heat retention
- Zippered closure for high-performance fit
- Reflective trim for low-light visibility and light loop for attaching The Beacon™

COLORS: Twilight Gray | Baja Blue | Alpenglow Pink

Girth:	XXS	XS	S	M	L	XL
	13-17 in 33-43 cm	17-22 in 43-56 cm	22-27 in 56-69 cm	27-32 in 69-81 cm	32-36 in 81-91 cm	36-42 in 91-107 cm

Girth:	XXS	XS	S	M	L	XL
	13-17 in 33-43 cm	17-22 in 43-56 cm	22-27 in 56-69 cm	27-32 in 69-81 cm	32-36 in 81-91 cm	36-42 in 91-107 cm



Stumptown™ Jacket

Abrasion-resistant exterior shell and recycled polyester insulation provides cozy warmth on clear, cold days while leash portal allows the Stumptown to be worn over most harnesses.

KEY FEATURES:

- 300D polyester ripstop shell fabric is strong and abrasion resistant
- DWR finish repels water
- Recycled 120g polyester insulation provides warmth
- Leash portal on back is compatible with most harnesses
- Side release buckles for easy on/off
- Reflective trim for low-light visibility and light loop for attaching The Beacon™

COLORS: Metolius Blue | Larkspur Purple



Overcoat™ Jacket

Durable wind- and water-resistant outer fabric with recycled polyester fleece lining keeps body heat in while leash portal allows the Overcoat to be worn over most harnesses.

KEY FEATURES:

- Strong, abrasion resistant recycled polyester outer fabric
- Warm, comfortable recycled polyester fleece lining
- Leash portal on back is compatible with most harnesses
- Vest style provides good coverage with side release buckles for easy on/off
- Reflective trim for low-light visibility and light loop for attaching The Beacon™

COLORS: Twilight Gray | Baja Blue | Red Currant

Girth:	XXS	XS	S	M	L	XL
	13-17 in 33-43 cm	17-22 in 43-56 cm	22-27 in 56-69 cm	27-32 in 69-81 cm	32-36 in 81-91 cm	36-42 in 91-107 cm

Girth:	XXS	XS	S	M	L	XL
	13-17 in 33-43 cm	17-22 in 43-56 cm	22-27 in 56-69 cm	27-32 in 69-81 cm	32-36 in 81-91 cm	36-42 in 91-107 cm



**You can poach my
line anytime.**

Bailey & Elise
Mt. Bachelor, OR



Powder Hound™ Jacket

Weather resistant and insulated jacket is ideal for cold-weather activities with the recycled polyester insulated upper panel and a fleece-lined lower panel that holds in warmth and sheds water, snow, and dirt.

KEY FEATURES:

- 75D polyester shell fabric
- Recycled 250g high loft synthetic insulation provides warmth
- 30D polyester lining
- Nylon-spandex blend with four-way technical stretch offers full range of motion
- Sleeved style for core heat retention
- Reflective trim for low-light visibility and light loop for attaching The Beacon™

COLORS: Forest Green | Blue Atoll | Sockeye Red

Girth:	XXS	XS	S	M	L	XL
	13-17 in 33-43 cm	17-22 in 43-56 cm	22-27 in 56-69 cm	27-32 in 69-81 cm	32-36 in 81-91 cm	36-42 in 91-107 cm



Cloud Chaser™ Jacket

Extends activities during inclement weather featuring a waterproof, windproof, breathable softshell fabric upper panel with a fleece-lined lower panel that holds in warmth and sheds water, snow, and dirt.

KEY FEATURES:

- Waterproof, windproof, breathable soft-shell upper fabric protects from the elements
- Coated lower fabric sheds water, snow and dirt
- Fleece-lined interior
- Sleeved style for core heat retention
- Zippered closure for high-performance fit
- Reflective trim for low-light visibility and light loop for attaching The Beacon™

COLORS: Blue Moon | Sockeye Red



Quinzee™ Jacket

Weather-resistant, packable jacket featuring recycled polyester insulation packs down into its integrated stuff sack for storage while leash portal on the back allows the Quinzee to be worn over most harnesses.

KEY FEATURES:

- 75D polyester shell fabric
- Recycled 250g high loft polyester insulation provides warmth
- 30D polyester lining
- Nylon-spandex blend gusset stretch
- Leash portal on back is compatible with most harnesses
- Side release buckles for easy on/off
- Integrated stuff sack for easy stow
- Reflective trim for low-light visibility and light loop for attaching The Beacon™

COLORS: Cloudburst Gray | Huckleberry Blue | Sockeye Red

Girth:

XXS	XS	S	M	L	XL
13-17 in 33-43 cm	17-22 in 43-56 cm	22-27 in 56-69 cm	27-32 in 69-81 cm	32-36 in 81-91 cm	36-42 in 91-107 cm

Girth:

XXS	XS	S	M	L	XL
13-17 in 33-43 cm	17-22 in 43-56 cm	22-27 in 56-69 cm	27-32 in 69-81 cm	32-36 in 81-91 cm	36-42 in 91-107 cm

CHOOSING APPAREL



Powder Hound™



Cloud Chaser™
























Quinzee™



Stumptown™



Overcoat™

	Powder Hound™	Cloud Chaser™	Quinzee™	Stumptown™	Overcoat™
COVERAGE					
WATERPROOFNESS					
WARMTH					
FLEECE LINING					
LEASH PORTAL					



Fernie™



Climate Changer™



Vert™



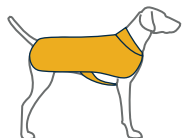
Sun Shower™



Wind Sprinter™



Track Jacket™



BEDS

Perfect for whenever your adventure pal needs a power nap. Warm, comfortable and durable dog beds and blankets with packable options for camping and backpacking.

#mydogismy

Day Dreamer





WORK HARD, REST HARD

Our foldable, waterproof Highlands Pad™ provides an insulated, protective surface for breaks and naps during training and work.



Mt. Bachelor™ Pad

Low-profile, easy-to-clean, portable bedroll rolls up and secures with integrated hook and loop straps. Waterproof, recycled polyester base offers stability and creates moisture barrier.

KEY FEATURES:

- Comfortable, warm, recycled polyfill interior
- Soft, long-wearing, easy-to-clean microsuede sleeping surface
- Waterproof, recycled polyester fabric base creates a moisture barrier
- Rolls into a compact, portable bedroll with integrated handle

COLORS: Granite Gray | Overcast Blue



Medium



Large

Urban Sprawl™ Bed

Plush bed ideal for winding down after adventures. The 100% recycled two-sided mattress offers option of soft or firm sleeping surface, while the removable cover is easy to clean.

KEY FEATURES:

- Two-sided, 100% recycled polyester mattress provides the option of a firm or soft sleeping surface
- Soft, long-wearing, easy-to-clean microsuede sleeping surface
- Waterproof polyester fabric base creates a moisture barrier
- Integrated handle for easy carrying

COLORS: Trailhead Brown | Overcast Blue

M
Unrolled: 27 x 34 in; 1 in loft (68 x 86 x 2.5 cm)
Rolled: 7 x 14 in (18 x 35.5 cm)

L
36 x 48 in; 1 in loft (91 x 122 x 2.5 cm)
8 x 18 in (20.5 x 45.5 cm)

M
28 x 35 in; 4 in loft (70 x 90 x 10 cm)

L
36 x 48 in; 4 in loft (91 x 122 x 10 cm)



Restcycle™ Bed

Mindfully built, baffled design is filled with our Restcycle™ foam, made from repurposed, post-manufacturing closed cell foam. Removable, machine-washable cover is made with recycled materials.

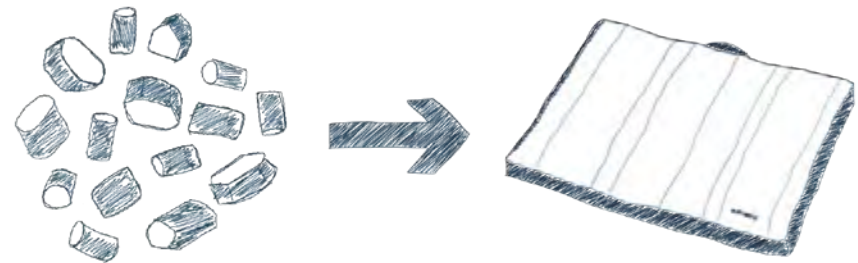
KEY FEATURES:

- Recycled cover is removable, machine washable, and quick drying
- Recycled microsuede sleeping surface is soft and long-wearing with built-in pillow topper
- Pillow topper stuffed with recycled 300g polyester insulation provides plush comfort
- Baffled mattress made with Restcycle™ foam retains its shape
- Restcycle™ foam is repurposed post-manufacturing foam that remains dry and odor-free
- Graded loft design allows nesting without packing out
- Waterproof 600D TPE-coated recycled polyester base
- Integrated handle for easy carrying

COLORS: Cloudburst Gray | Huckleberry Blue

FILL BEDS, NOT LAND

Instead of going to the landfill, unused foam from backpack manufacturing is built into our comfy, nestable Restcycle Bed.



28 x 35 in; 4 in loft (70 x 90 x 10 cm)



**A few good reasons
for a slow morning.**

Ubu, Bailey, & Elise
Southern Oregon



Clear Lake™ Blanket

Durable blanket features bluesign® approved fabric and recycled polyester insulation that hold in warmth. Includes a stuff sack for easy transport.

KEY FEATURES:

- 75D bluesign® approved polyester shell fabric is water-resistant, quick drying and abrasion resistant
- Recycled 500g polyester insulation provides warmth
- Stuff sack included for storage and compressibility

COLOR: Huckleberry Blue

Flat: 43 x 55 in; 2 in loft (110 x 140 x 5 cm)
Stuffed: 14.5 x 7 in (37.5 x 17.5 cm)
Weight: 2.1 lbs (953 grams)



Highlands™ Bed

Packable, durable bed with integrated pad sleeve accommodates the Ruffwear Highlands Pad (sold separately) for additional insulation. Fits in all sizes of Ruffwear's Palisades™ Pack.

KEY FEATURES:

- Synthetic insulation insulates the dog from the ground
- Polyester shell fabric is water-resistant, quick drying, and durable
- Integrated pad sleeve accommodates the Highlands™ Pad (sold separately) for additional insulation and cushion
- Stuff sack included for storage and compressibility

COLOR: Meadow Green



Highlands™ Sleeping Bag

Packable, durable sleeping bag, with zippered opening, features integrated pad sleeve for the Ruffwear Highlands Pad (sold separately). Fits in all sizes of Ruffwear's Palisades™ Pack.

KEY FEATURES:

- Synthetic insulation insulates the dog from the ground
- Polyester shell fabric is water-resistant, quick drying, and durable
- Side zipper opens the bag wide for easy entry, zips closed to retain body heat
- Integrated pad sleeve accommodates the Highlands™ Pad (sold separately) for additional insulation and cushion
- Stuff sack included for storage and compressibility

COLOR: Meadow Green



Highlands™ Pad

Foldable, closed-cell foam pad can be used on its own, or in conjunction with the Ruffwear Highlands Bed or the Highlands Sleeping Bag for a complete sleeping system.

KEY FEATURES:

- Closed-cell foam provides insulation from hard, cold surfaces and will stay dry
- Brushed polyester shell fabric is weatherproof, soft and durable
- Use with our Highlands™ Bed or Highlands™ Sleeping Bag to add additional insulation and cushion, for a complete sleeping system, or use on its own
- Accordion-fold design for transport

COLOR: Granite Gray

Flat: 35 x 26 in; 1 in loft (89 x 66 x 2.5 cm)
Stuffed: 12 x 4 in (30 x 10 cm)
Weight: 12.7 oz (360 g)

Flat: 35 x 26 in; 1 in loft (89 x 66 x 2.5 cm)
Stuffed: 12 x 7 in (30 x 18 cm)
Weight: 1 lb 10.8 oz (760 g)

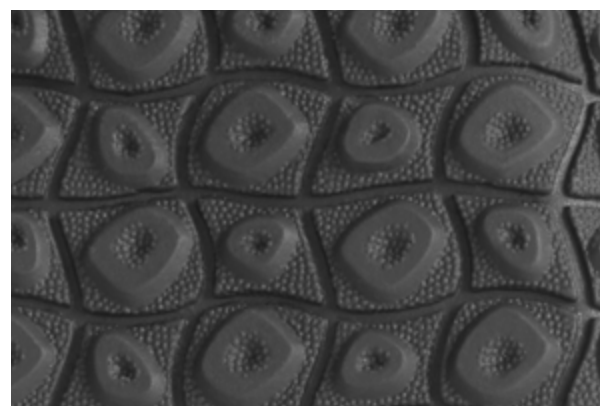
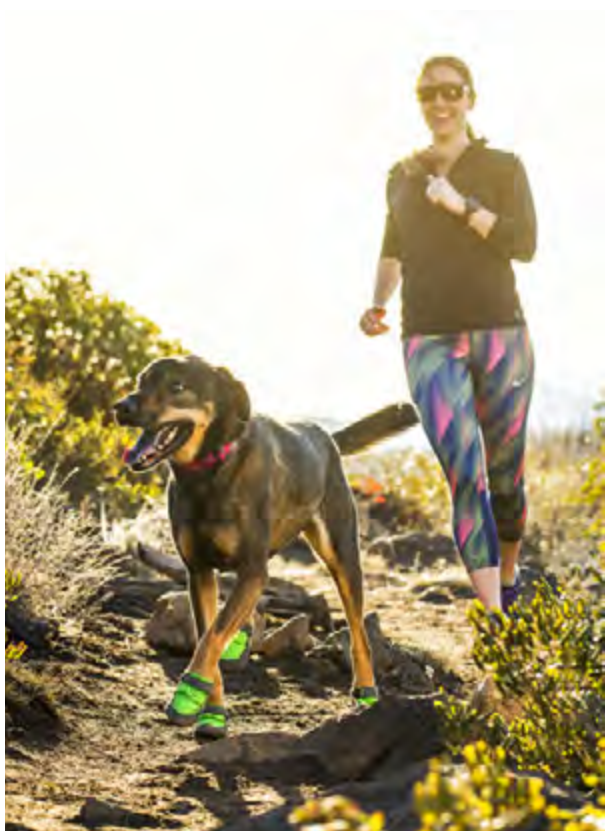
Flat: 34 x 25 in; 0.4 in loft (86.5 x 64 x 1 cm)
Folded: 13 x 6 x 4.5 in (33 x 15 x 11.5 cm)
Weight: 7.4 oz (210 g)

BOOTS

We find joy in sharing year-round adventures with our dogs. Our designers take the same approach to dog boots as we do in choosing our own footwear. The result is paw protection for hot pavement, rocky alpine trails, cold and snow, and more.

#mydogismy

Trail Blazer





BREATHABLE PROTECTION

From untracked wilderness to urban disaster zones, our Grip Trex™ Boots protect paws so working dogs can focus on the task at hand.



Grip Trex™ Boots

High-performance paw protection with rugged Vibram® outsoles provides exceptional traction on varied terrain. Closure system cinches around the narrowest part of the dog's leg for secure fit.

KEY FEATURES:

- Protects dogs' paws from extreme environments
- Tightly woven air mesh is breathable while keeping dirt and debris out
- Vibram® non-marking outsole with rugged lug design provides flexibility and traction on varied terrain
- Reliable, intuitive hook-and-loop cinch closure system
- Gusset design provides wide opening for easy on/off
- Reflective trim for low-light visibility
- Available in sets of two or four

COLORS: Obsidian Black | Blue Spring | Red Currant



Summit Trex™ Boots

Paw protection from extreme temperatures, abrasive surfaces, and salt or other snowmelt chemicals. Weather-resistant upper blocks moisture and debris. Closure system cinches around the narrowest part of the dog's leg for secure fit.

KEY FEATURES:

- Protects dogs' paws from abrasive surfaces and snowmelt chemicals
- Moisture and debris stay out via weather-resistant ripstop upper
- Traction that's flexible with a non-marking outsole
- Reliable, intuitive hook-and-loop cinch closure system
- Available in sets of two or four

COLORS: Twilight Gray | Meadow Green

Paw Width:	1.5 in	1.75 in	2.0 in	2.25 in	2.5 in	2.75 in	3.0 in	3.25 in
	38 mm	44 mm	51 mm	57 mm	64 mm	70 mm	76 mm	83 mm

Paw Width:	1.5 in	1.75 in	2.0 in	2.25 in	2.5 in	2.75 in	3.0 in	3.25 in
	38 mm	44 mm	51 mm	57 mm	64 mm	70 mm	76 mm	83 mm



Polar Trex™ Boots

Insulated upper fabric offers breathable, weatherproof warmth while the Vibram® outsole provides traction on frozen surfaces. Closure system cinches around the narrowest part of the dog's leg for secure fit. Pullover stretch gaiter keeps snow out.

KEY FEATURES:

- Protects paws and legs from elements and ski edges
- Pullover stretch gaiter with zippered closure keeps boots on and weather out
- Waterproof, windproof, breathable, soft-shell upper fabric
- Vibram® Ictrek® outsole rubber compound with winter-specific lug pattern provides superb traction on frozen surfaces
- Reflective trim for low-light visibility
- Available in sets of two or four

COLOR: Forest Green



Bark'n Boot™ Liners

Enhance the fit, upgrade the performance, and improve the comfort of our dog boots. Makes putting on Ruffwear boots a cinch. Ideal for dogs with dew claws.

KEY FEATURES:

- Tapered cuff keeps the boot liner in place on the dog's paws
- Polypropylene/spandex blend wicks moisture, dries quickly and provides comfort
- Curved "claw box" follows dog paw anatomy and minimizes bulk inside the boot
- Available in a set of four

COLOR: Twilight Gray

Paw Width:	1.5 in	1.75 in	2.0 in	2.25 in	2.5 in	2.75 in	3.0 in	3.25 in
	38 mm	44 mm	51 mm	57 mm	64 mm	70 mm	76 mm	83 mm

Liner Size = Boot Size	1.5 / 1.75 in	2.0 / 2.25 in	2.5 / 2.75 in	3.0 / 3.25 in
	38/44 mm	51/57 mm	64/70 mm	76/83 mm



**Hitting their stride on
Bend's singletrack.**

Kuna & Eva
Bend, OR

YOUR PATH TO THE RIGHT DOG BOOT

Choose Your Activity

Everyday



Summit Trex™

Perfect for everyday traction and paw protection from wet conditions, abrasive surfaces and salt or snowmelt chemicals.

Backpacking, Hiking,
Mountain Biking,
Trail Running



Grip Trex™

For breathable protection from extreme environments and varied terrain, these boots set the standard in paw wear for canine explorers.

Skiing, Snowboarding



Polar Trex™

Designed for warmth, traction and protection in winter conditions and on frozen surfaces.

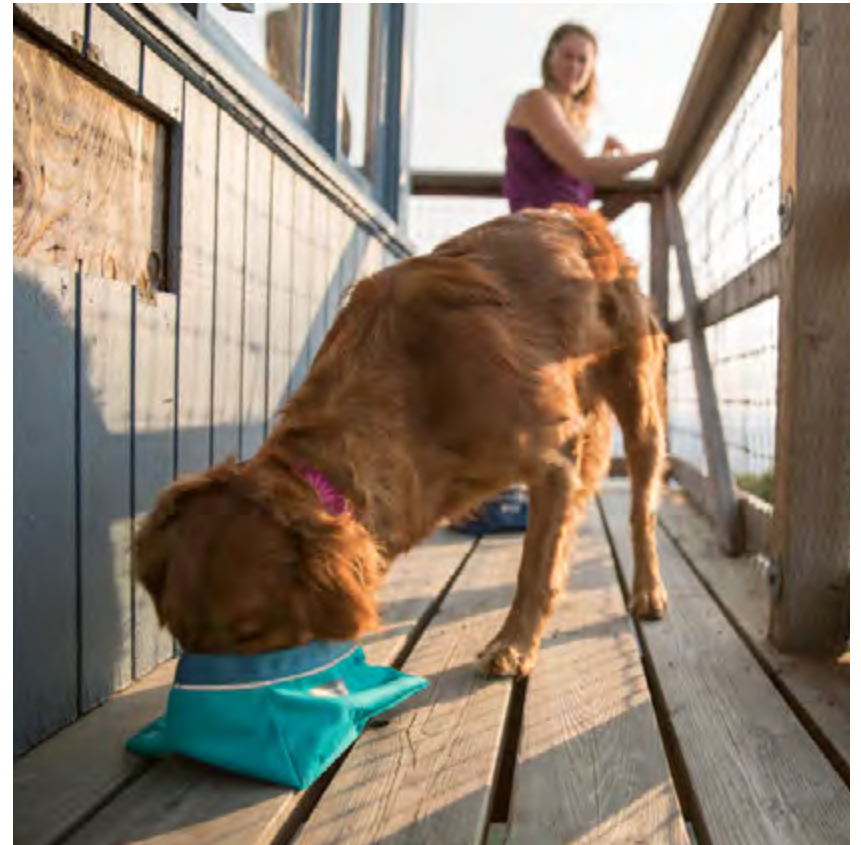
BOWLS

Ruffwear's original product was its collapsible, packable food and water bowl. We've continued to innovate, using welded fabric to create ultralight dog bowls that go anywhere. From camp to the trail to the open road, our bowls are made for dogs on the go.

#mydogismy

Bottomless Pit





WORKING UP A THIRST

Hard working dogs require good hydration and fueling. Our Quencher™ Bowl makes it easy to get your fill on the job - or on the go.



Quencher™ Bowl

The original packable dog bowl. Designed to provide dogs with food and water on the go, this collapsible fabric bowl easily fits in a pocket or backpack.

KEY FEATURES:

- Packable, lightweight food and water bowl
- Durable, water-resistant shell fabric and lightweight, waterproof lining
- Reflective trim for low-light visibility

COLORS: Meltwater Teal | Blue Moon | Pumpkin Orange



Quencher Cinch Top™ Bowl

Minimize and simplify by storing and feeding from this multi-use fabric bowl. The integrated drawstring closure keeps kibble contained en route and accessible at mealtime.

KEY FEATURES:

- Packable, lightweight food and water bowl
- Integrated drawstring closure
- Durable, water-resistant shell fabric and lightweight, waterproof lining
- Reflective trim for low-light visibility

COLORS: Meltwater Teal | Blue Moon | Pumpkin Orange

	S	M	L
Opening:	4.5 in (11 cm)	5.5 in (14 cm)	7 in (18 cm)
Capacity:	25.4 fl oz (0.75 L)	1.1 qt (1 L)	2.6 qt (2.5 L)

	M	L
Opening:	5.5 in (14 cm)	7 in (18 cm)
Capacity:	1.1 qt (1 L)	2.6 qt (2.5 L)



**Skijoring up a thirst in
Montana's Paradise Valley.**

Balto, Ruby, & Darcie
Livingston, MT

Great Companions
This gear goes great together.



Bivy™ Bowl

Ultra-light, durable fabric design. Welded, single-wall construction keeps the bowl simple and clean, while engineered collapsibility makes it portable and ready to hit the trail.

KEY FEATURES:

- Waterproof bowl using welded fabric technology
- Single-wall construction is easy to clean
- Engineered collapsibility for easy transport
- Stable shape and no-slip bottom keeps food or water in the bowl
- Reflective trim for low-light visibility

COLOR: Blue Spring



Kibble Kaddie™

Travel-friendly dog food storage system with top-loading, roll-down closure to secure contents. Kibble is dispensed through side-mounted food chute. External stash pocket for collapsible bowls.

KEY FEATURES:

- Kibble dispenses through food chute with magnetic closure
- Roll-down top closure is secure and allows for adjustable volume
- Grease-resistant fabric
- Stretch stash pocket accommodates the essentials

COLOR: Forest Green

Opening: 6 in (15 cm)
Capacity: 60 fl oz (1.8 L)

Volume: 10 L (42 cups)



Trail Runner™ Bowl

Ultralight bowl packs into itself for ultimate portability. Ideal for water and fuel breaks on the trail. Fits inside the pocket of the Trail Runner™ Belt as well as pockets on most running apparel.

KEY FEATURES:

- Durable, PVC-free coated fabric
- Single-wall construction is easy to clean
- Ultralight design travels anywhere
- Stuffs into its own pocket for easy stow
- Packs easily into a small pocket, backpack or the Trail Runner Belt pocket

COLOR: Blue Dusk



Diameter: 7 in (19 cm)
Volume: 32 oz (1 L)



Sweet anticipation.

Bailey, Ubu, & Elise
Central Oregon

Great Companions
This gear goes great together.



Basecamp™ Bowl

Stainless steel food and water bowl stays put with a silicone grip base. Multiple bowls stack together for easy stow, interior shape collects food or water in the center for easy access.

KEY FEATURES:

- Food grade 304 stainless steel
- Silicone grip base
- Large enough to hold water as well as food
- Concave bottom so food and water collects in the center
- Easy-to-pick-up design
- Stackable for easy stow
- Durable powder coat finish

COLORS: Obsidian Black | Fern Green | Blue Dusk



Basecamp™ Mat

Food and water bowl mat with recycled TPE-coated grip base and sturdy walls to contain spills. Fits two Basecamp™ Bowls side-by-side and features a topo-map design for outdoor inspiration.

KEY FEATURES:

- Durable, easy-to-clean coated polyester fabric
- Waterproof
- Recycled TPE-coated grip base
- Sturdy walls that contain spills
- Fits two Basecamp Bowls side-by-side

COLOR: Twilight Gray

Bowl Capacity: 5 cups (1.2 L)

20.75 in x 13 in x 1.5 in (53 x 33 x 4 cm)

COLLARS + LEASHES

Not only a literal connection to our dogs, a collar and leash is a statement of our relationship, a representation of how we interact, a symbol of the adventures we love to share.

#mydogismy

Trail Dog





FOR QUICK TRANSITIONS

Inspired by avalanche rescue dogs and handlers, the Patroller™ Leash makes on/off leash transitions easy and quick during training.

OBSIDIAN BLACK

PURPLE DUSK

RED CURRANT

ORANGE SUNSET

BLUE MOUNTAINS

RED BUTTE

BROOK TROUT

MONUMENT VALLEY

LOTUS

Great Companions

This gear goes great together.



Hoopie™ Collar

Everyday collar with an easy-to-use side-release buckle. Outdoor-inspired patterns connect you with your favorite wild places.

KEY FEATURES:

- Ruffwear-designed Tubelok™ webbing
- Easy-to-use side-release buckle
- Single-piece, anodized aluminum V-ring provides a secure leash attachment point
- Easily add or remove tags with Quick Ring™
- Separate ID attachment point
- Silicone tag silencer

COLORS: Obsidian Black | Purple Dusk | Red Currant | Orange Sunset
Blue Mountains | Red Butte | Brook Trout | Monument Valley | Lotus



Flat Out™ Leash

Everyday leash that can be hand-held or waist-worn for hands-free leash walking. Outdoor-inspired patterns connect you with your favorite wild places.

KEY FEATURES:

- Ruffwear-designed Tubelok™ webbing
- Talon Clip™ is strong, secure and ergonomically designed for one-handed attachment
- Adjustable, padded handle and side-release buckle with aluminum uniloop
- Can be hand-held, waist-worn or secured around a tree or post
- Traffic handle offers quick restraint
- Convenient accessory loop for pick-up bags or small clip-on items

COLORS: Obsidian Black | Purple Dusk | Red Currant | Orange Sunset
Blue Mountains | Red Butte | Brook Trout | Monument Valley | Lotus

Neck:	11-14 in	14-20 in	20-26 in
	28-36 cm	36-51 cm	51-66 cm
Width:	3/4 in (20 mm)	1 in (25 mm)	1 in (25 mm)

Length:	6 ft (1.8 m)
Width:	1 in (25 mm)



Knot-a-Leash™

Rugged, climbing-inspired dog leash with strong, supple kernmantle rope and a secure locking carabiner. Reflective rope for visibility in low-light conditions.

KEY FEATURES:

- Strong, supple, reflective kernmantle rope
- Strong and secure locking carabiner
- Comfortable, easy-to-hold tubular webbing handle
- Convenient accessory loop for pick-up bags or small clip-on items

COLORS: Granite Gray | Blue Atoll | Red Currant | Pumpkin Orange



Knot-a-Long™ Leash

Rugged, climbing-inspired leash in a 30-inch (0.76 m) length. This short lead uses strong, supple kernmantle rope and a secure locking carabiner. Pairs great with our Double Track™ Coupler.

KEY FEATURES:

- Strong, supple, reflective kernmantle rope
- 30-inch (0.76 m) length keeps dogs close and is ideal for use with Double Track™ Coupler
- Strong and secure locking carabiner
- Comfortable, easy-to-hold tubular webbing handle
- Convenient accessory loop for pick-up bags or small clip-on items

COLORS: Granite Gray | Blue Atoll | Red Currant | Pumpkin Orange

Length: **S** 5 ft (1.5 m) | **L** 5 ft (1.5 m)
Diameter of Rope: 7 mm | 11 mm

Length: 30 in (76 cm)
Diameter of Rope: 11 mm



Just-a-Cinch™ Leash

Rugged, climbing-inspired, utilitarian leash/collar combination. The "collar" is created by slipping the end loop over the dog's head and using the silicone stopper to keep it in place.

KEY FEATURES:

- Strong, supple, reflective kernmantle rope
- Cinch lead design offers universal fit and a secure connection
- Comfortable, easy to hold tubular webbing handle
- Silicone stopper is easy to adjust for a customizable fit
- Convenient accessory loop for pick-up bags or small clip-on items

COLORS: Granite Gray | Blue Atoll | Red Currant | Pumpkin Orange

Length: 5 ft (1.5 m)
Diameter of Rope: 11 mm



Knot-a-Collar™

Low-profile, climbing-inspired collar settles comfortably in short or long fur and reduces matting. Reflective rope for visibility in low-light conditions.

KEY FEATURES:

- Low-profile 7 mm rope with reflective trim settles comfortably into fur
- Sliding fisherman knots are adjustable for a customizable fit
- Single-piece, anodized aluminum V-ring provides a secure leash attachment point
- Easily add or remove tags with Quick Ring™
- Separate ID attachment point
- Silicone tag silencer

COLORS: Granite Gray | Blue Atoll | Red Currant | Pumpkin Orange

Neck: 14-20 in (36-51 cm) | 20-26 in (51-66 cm)
Diameter of Rope: 7 mm | 7 mm

Great Companions

This gear goes great together.



Slackline™ Leash

Adjustable-length leash that can be hand-held or waist-worn for hands-free leash walking. Ergonomic metal slider for easy one-handed length adjustment. Integrated reflectivity for visibility in low-light conditions.

KEY FEATURES:

- Ruffwear-designed Tubelok™ webbing with reflective trim
- Talon Clip™ is strong, secure and ergonomically designed for one-handed attachment
- Adjustable padded handle and side-release buckle with aluminum unilook
- Can be hand-held, waist-worn or secured around a tree or post
- Ergonomic slider for easy length adjustment
- Convenient accessory loop for pick-up bags or small clip-on items

COLORS: Twilight Gray | Meadow Green
Purple Dusk | Kokanee Red



Crag™ Collar

Easy-to-use side-release buckle paired with Tubelok™ webbing. Integrated reflectivity for visibility in low-light conditions.

KEY FEATURES:

- Ruffwear-designed Tubelok™ webbing with reflective trim
- Easy-to-use side-release buckle
- Single-piece, anodized aluminum V-ring provides a secure leash attachment point
- Easily add or remove tags with Quick Ring™
- Separate ID attachment point
- Silicone tag silencer

COLORS: Twilight Gray | Meadow Green
Purple Dusk | Kokanee Red

Length: 3.5-6 ft (1.1-1.8 m)
Width: 1 in (25 mm)

Neck:	11-14 in 28-36 cm	14-20 in 36-51 cm	20-26 in 51-66 cm
Width:	3/4 in (20 mm)	1 in (25 mm)	1 in (25 mm)

TWILIGHT GRAY

PURPLE DUSK



Top Rope™ Collar

Strong and reliable, our all-metal Talon Buckle™ conveniently positions the V-ring at the top of the dog's neck for quick leash clip-in. Integrated reflectivity for visibility in low-light conditions.

KEY FEATURES:

- Ruffwear-designed Tubelok™ webbing with reflective trim
- Ruffwear-designed, all-metal Talon Buckle™ provides ballast to keep V-ring at the top of the dog's neck, allowing easy leash clipping
- Single-piece, anodized aluminum V-ring provides a secure leash attachment point
- Easily add or remove tags with Quick Ring™
- Separate ID attachment point
- Silicone tag silencer

COLORS: Twilight Gray | Meadow Green
Purple Dusk | Kokanee Red



Chain Reaction™ Collar

Martingale-style collar combines Tubelok™ webbing and stainless steel chain for limited correction with an audible cue - a great training tool. Integrated reflectivity for visibility in low-light conditions.

KEY FEATURES:

- Ruffwear-designed Tubelok™ webbing with reflective trim
- Limited cinch design and audible correction with stainless steel chain for controlled leashed walking
- Single-piece, anodized aluminum V-ring provides a secure leash attachment point
- Easily add or remove tags with Quick Ring™
- Separate ID attachment point
- Silicone tag silencer

COLORS: Twilight Gray | Meadow Green
Purple Dusk | Kokanee Red

MEADOW GREEN

KOKANEE RED

	S	M	L
Neck:	11-14 (28-36 cm)	14-20 in (36-51 cm)	20-26 in (51-66 cm)
Width:	3/4 in (20 mm)	1 in (25 mm)	1 in (25 mm)

	S	M	L
Neck:	11-14 (28-36 cm)	14-20 in (36-51 cm)	20-26 in (51-66 cm)
Width:	3/4 in (20 mm)	1 in (25 mm)	1 in (25 mm)



Roamer™ Leash

Adjustable Wavelength™ stretch webbing leash that can be hand-held or worn around the waist for a dynamic hands-free leash experience.

KEY FEATURES:

- Ruffwear's Wavelength™ webbing absorbs shock
- Talon Clip™ is strong, secure and ergonomically designed for one-handed attachment
- Adjustable, padded handle and side-release buckle with aluminum uniload
- Can be hand-held, waist-worn or secured around a tree or post
- Traffic handle offers quick restraint
- Convenient accessory loop for pick-up bags or small clip-on items

COLORS: Obsidian Black | Purple Dusk | Red Currant | Orange Sunset



Ridgeline™ Leash

Lightweight, minimalist leash built with Wavelength™ stretch webbing and low-profile Crux Clip™. Compact design fits easily into a pocket. Longer length pairs great with the Trail Runner™ Belt.

KEY FEATURES:

- Ruffwear's Wavelength™ webbing absorbs shock
- Swiveling Crux Clip™ is strong, secure and provides one-handed attachment

COLORS: Granite Gray | Forest Green

Length: 5.5-7 ft (1.7-2.1 m) | 7.3-11 ft (2.2-3.4 m)

Length: **M** 2.5-4.25 ft (0.75-1.3 m) | **L** 3.3-5.9 ft (1-1.8 m)



Double Track™ Coupler

Leash adapter that allows easy, tangle-free walking of two dogs. Wavelength™ stretch webbing absorbs shock, providing a comfortable experience for dogs and their humans.

KEY FEATURES:

- Ruffwear's Wavelength™ webbing absorbs shock
- Swiveling Crux Clip™ is strong, secure and provides one-handed attachment
- Adapt any leash to a two-dog walking system with the single-piece, anodized aluminum V-ring

COLOR: Granite Gray

Roamer Leash

Obsidian Black

Purple Dusk

Red Currant

Orange Sunset

Ridgeline Leash

Granite Gray

Forest Green

Double Track Coupler

Granite Gray

Length Per Side: 12 in (30 cm) **Stretches To:** 19 in (48 cm)

ORANGE POPPY

MEADOW GREEN

WILD BERRY

TWILIGHT GRAY

TILLANDSIA PURPLE

BLUE DUSK



Front Range™ Leash

Designed to pair with our customer-favorite Front Range® Harness, this comfortable leash includes a padded, ergonomic handle and Ruffwear-designed hardware.

KEY FEATURES:

- Nylon webbing is sturdy yet light
- Swiveling Crux Clip™ is strong, secure and provides one-handed attachment
- Padded handle
- Traffic handle offers quick restraint
- Convenient accessory loop for pick-up bags or small clip-on items

COLORS: Twilight Gray | Meadow Green | Blue Dusk
Tillandsia Purple | Wild Berry | Orange Poppy

Length: 5 ft (1.5 m)
Width: 3/4 in (20 mm)



Patroller™ Leash

Inspired by working dogs and their handlers, this adjustable leash can be worn around the waist as a belt, allowing dogs and humans to transition smoothly between on-leash and off-leash.

KEY FEATURES:

- Ruffwear-designed Tubelok™ webbing with reflective trim
- Talon Clip™ is strong, secure and ergonomically designed for one-handed attachment
- Can be hand-held or worn as a belt
- Adjustable length from 30 to 48 inches (76.2 – 121.9 cm)

COLORS: Twilight Gray | Kokanee Red

Length: 30-48 in (76.2-121.9 cm)
Width: 1 in (25 mm)



Avalanche Rescue Dog, Banyan wishes every day could be Monday.

Banyan & Drew
WBR at Brighton Resort, UT



Christina: Camp Chef
Savy: Squirrel Patrol

Savy & Christina
Lost Lake, OR



Knot-a-Hitch™

Climbing-inspired campsite dog-hitching system allows dogs to roam at camp while remaining on leash. Includes strong, kernmantle rope that can be set up between two trees or secured to a single post.

KEY FEATURES:

- Hitching system for allowing dogs to roam while remaining on leash
- Can be secured around two trees or a single post
- Strong, supple, reflective kernmantle rope
- Quick set up with easy-to-use tensioning system inspired by auto-lock techniques used by rock climbers
- Convenient and durable stow bag contains rope tail ends while storm flap keeps elements out

COLOR: Red Currant



Total Length:

36 ft (12 m)

Stow Bag:

6 in x 7 in x 2 in (16 cm x 18.5 cm x 5 cm)



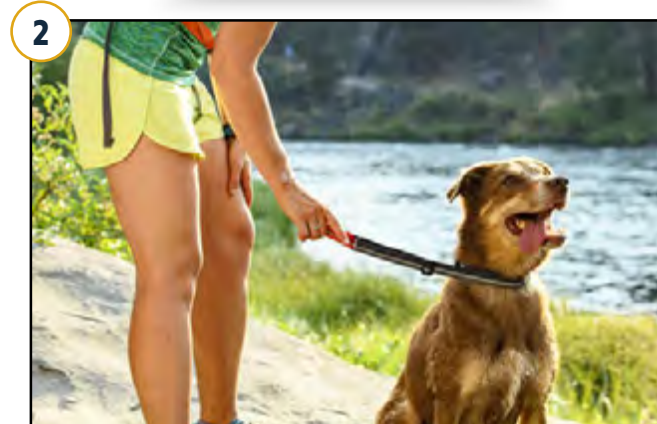
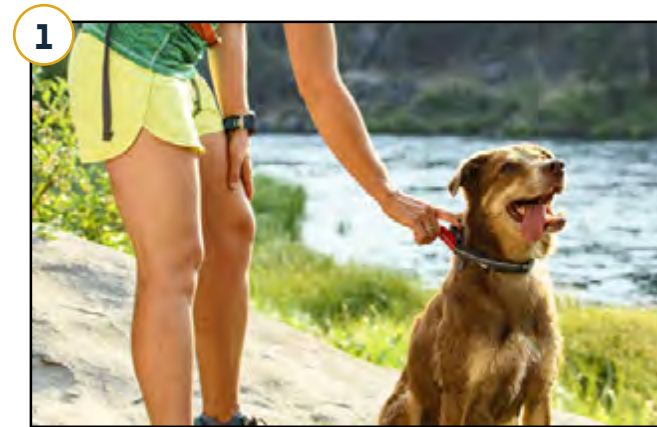
Quick Draw™ Leash

Leash worn around a dog's collar when not in use. Clips onto any collar and wraps around the dog's neck, securing with a hook and loop closure. Pull the tab to go from off-leash to on-leash.

KEY FEATURES:

- Grab tab provides quick access to leash
- Swiveling Crux Clip™ is strong, secure and provides one-handed attachment
- Leash is 20 - 27 inches (51 - 69 cm) in length, depending on neck size
- Reflective trim for low-light visibility

COLOR: Twilight Gray



Adjustable size fits necks from: 14-22 in (36-56 cm)

TRAIL RUNNING

May your trails be crooked, winding, and never lonesome.



CAMPING

Sharing a night under the stars with your dog? Amazing. Sharing your sleeping bag and food bowl? Hey, we all have limits. Our camping collection includes the gear your furry friend needs for a night outside.



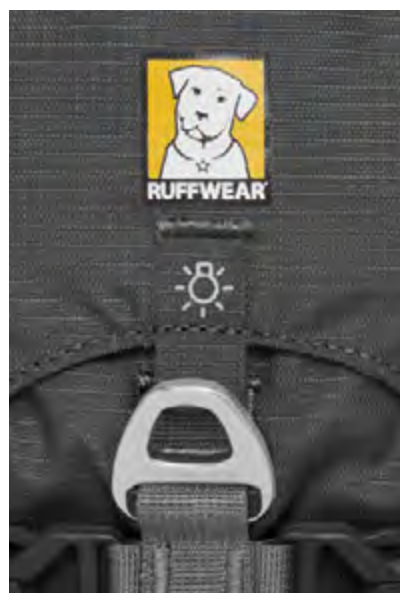
HARNESSES

Comfortable all day? Check. Freedom to run and play? Check. Our harnesses offer solutions for lift-and-assist, training or leash pulling, and everyday adventures. They're built from a dog's perspective, with an adjustable fit for any size or shape.

#mydogismy

Adventure Pal





READY TO WORK

With a platform for attaching patches and signage and a comfortable, padded handle, it's no wonder the Web Master™ Harness is the preferred harness among working dogs and handlers.



Hi & Light™ Harness

Lightweight, minimalist adventure harness includes XXXS size. Features single V-ring leash attachment point on the dog's back, debris-resistant liner, and a pocket to store dog tags and pick-up bags.

KEY FEATURES:

- Customizable fit with four points of adjustment allows for full range of motion
- Single leash attachment point: anodized aluminum V-ring on the dog's back
- Lightweight construction minimizes bulk
- Debris-resistant liner
- Reflective trim for low-light visibility and light loop for attaching The Beacon™
- ID pocket stores dog tags and pick-up bags

COLORS: Twilight Gray | Blue Atoll | Sockeye Red



Front Range® Harness

Comfortable, everyday harness that is easy to put on. Two leash attachment points: V-ring centered on the dog's back, and reinforced webbing at the dog's chest for additional control.

KEY FEATURES:

- Customizable fit with four points of adjustment allows for full range of motion
- Two leash attachment points: aluminum V-ring on the dog's back and reinforced webbing on the dog's chest
- Padded chest and belly panel for good load dispersion and comfortable, extended wear
- Reflective trim for low-light visibility
- ID pocket stores dog tags

COLORS: Twilight Gray | Meadow Green | Blue Dusk
Tillandsia Purple | Wild Berry | Orange Poppy

Girth: **XXXS** | **XXS** | **XS** | **S** | **M** | **L/XL**
9-13 in | 13-17 in | 17-22 in | 22-27 in | 27-32 in | 32-42 in
23-33 cm | 33-43 cm | 43-56 cm | 56-69 cm | 69-81 cm | 81-107 cm

Girth: **XXS** | **XS** | **S** | **M** | **L/XL**
13-17 in | 17-22 in | 22-27 in | 27-32 in | 32-42 in
33-43 cm | 43-56 cm | 56-69 cm | 69-81 cm | 81-107 cm

INSPIRED BY NATURE BUILT FOR ADVENTURE

Our favorite colors from our natural surroundings
infused into a comfortable, all-day harness.



Twilight Gray



Meadow Green



Blue Dusk



Tillandsia Purple



Wild Berry



Orange Poppy





Web Master™ Harness

Supportive, multi-use harness built for maneuvering and assisting dogs up and over obstacles. The preferred harness of many avalanche rescue dog programs, service dog handlers, and amputee dogs.

KEY FEATURES:

- Customizable fit with five points of adjustment allows for full range of motion
- Two leash attachment points: single-piece, anodized aluminum V-ring and the webbing loop
- Foam padded straps for comfortable, extended wear
- Anatomical design and padded handle provide balanced lifting with good load dispersion
- Reflective trim for low-light visibility and light loop for attaching The Beacon™

COLORS: Twilight Gray | Blue Dusk | Red Currant



Web Master Pro™ Harness

Lift-and-assist harness designed for professional avalanche and search and rescue teams. All-metal hardware, oversized handle for gloved hands, and low-profile pockets for small essentials and easy sewing of ID patches.

KEY FEATURES:

- Customizable fit with five points of adjustment allows for full range of motion
- Two leash attachment points: single-piece, anodized aluminum V-ring and webbing loop
- Foam-padded straps for comfortable, extended wear
- Oversized handle is designed for use with gloves and provides an easy lift and assist when loading dogs into vehicles, airships and chairlifts
- All-metal hardware provides durability with the rigors of professional use and retains function in snow, ice and dirt environments
- Two low-profile, zippered pockets have interior stretch
- Reflective trim for low-light visibility and light loop for attaching The Beacon™

COLOR: Red Currant

Girth:

XXS	XS	S	M	L/XL
13-17 in 33-43 cm	17-22 in 43-56 cm	22-27 in 56-69 cm	27-32 in 69-81 cm	32-42 in 81-107 cm

Girth:

XS	S	M	L/XL
17-22 in 43-56 cm	22-27 in 56-69 cm	27-32 in 69-81 cm	32-42 in 81-107 cm



Brush Guard™

Add-on to Ruffwear harnesses and packs, offering chest and belly protection from abrasion, adds additional support when lifting and assisting dogs, and further stabilizes select packs and harnesses.

KEY FEATURES:

- Add-on to Ruffwear's Web Master™ Harness, Web Master Pro™ Harness, Approach™ Pack, Palisades™ Pack and Singletrak™ Pack
- Three-layer construction provides protection, load dispersion and stability for all-season use
- Nylon exterior is resistant to foxtails, stickers, snow and ice build-up
- Designed for additional chest and belly coverage while allowing full range of motion
- Hook-and-loop sleeves for easy on/off

COLOR: Twilight Gray



Core Cooler™

Add-on to Ruffwear harnesses and packs that cools dogs, adds additional support when lifting and assisting, and further stabilizes select packs and harnesses. Uses evaporative cooling to efficiently pull heat from the dog's core.

KEY FEATURES:

- Add-on to Ruffwear's Web Master™ Harness, Web Master Pro™ Harness, Approach™ Pack, Palisades™ Pack and Singletrak™ Pack
- Three layer construction:
 - Wicking outer layer facilitates evaporation
 - Absorbent middle layer stores water for evaporation
 - Comfortable inner layer transfers cooling effect to the dog
- Provides load dispersion and stability
- Hook-and-loop sleeves for easy on/off

COLOR: Graphite Gray

**Brush Guard Size =
Harness/Pack Size:**

XS	S	M	L/XL
17-22 in 43-56 cm	22-27 in 56-69 cm	27-32 in 69-81 cm	32-42 in 81-107 cm

**Core Cooler Size =
Harness/Pack Size:**

XS	S	M	L/XL
17-22 in 43-56 cm	22-27 in 56-69 cm	27-32 in 69-81 cm	32-42 in 81-107 cm



Doubleback™ Harness

Strength-rated belay harness designed to safely lift and lower dogs in exposed areas.

KEY FEATURES:

- Customizable, secure fit with seven points of adjustment
- Padded belly support and leg loops provide stability and weight dispersion
- Anodized aluminum Doubleback buckles for safety and durability
- Main tie-in point provides easy rope attachment
- Leg loops can be stowed for increased mobility during approach
- Strength-rated to 2,000 lb for 8.9 kn.

COLOR: Cloudburst Gray



Load Up™ Harness

Automotive harness designed to safely transport dogs. Built with strength-rated hardware and components, successfully tested to withstand the rigors of a vehicle crash test. Attaches to existing seat belts.

KEY FEATURES:

- Universal seat belt attachment
- All-metal, strength-rated hardware
- Comfortable for extended wear
- Secures dogs during sudden vehicle movements

COLOR: Obsidian Black

Girth:	XS	S	M	L/XL
	17-22 in 43-56 cm	22-27 in 56-69 cm	27-32 in 69-81 cm	32-42 in 81-107 cm

Girth:	XXS	XS	S	M	L/XL
	13-17 in 33-43 cm	17-22 in 43-56 cm	22-27 in 56-69 cm	27-32 in 69-81 cm	32-42 in 81-107 cm



Omnijore™ Joring System

Provides a fun and comfortable way for a dog and human to work as a team, with the dog pulling and the human skiing, skateboarding, or biking. The complete system includes a dog harness, human hipbelt, towline and BPA-free 21 ounce Ruffwear bottle. Complies with international joring regulations.

KEY FEATURES:

Harness:

- Pulling-specific design with four points of adjustment
- Reflective accents for low-light visibility and light loop for attaching The Beacon™

Towline:

- Ruffwear's Wavelength™ webbing absorbs shock
- Swiveling Crux Clip™ is strong, secure and provides one-handed attachment
- Color-coded ends easily identify the attachment locations on the harness and hipbelt

Hip Belt:

- Comfortable, load-dispersing design
- Intuitive leash attachment release for quick disconnect
- Water bottle holster and two zippered pockets for essentials
- 21 oz (0.6 L) BPA-free Ruffwear water bottle
- Removable leg loops keep the hip belt in place

COLOR: Orange Poppy

Girth:

S	M	L/XL
22-27 in 56-69 cm	27-32 in 69-81 cm	32-42 in 81-107 cm

International Regulation Length: 6.5-8.75 ft
2-2.7 m

Fits Waist Size: 27-48 in
68-123 cm



**Your feet can't get tired if
they don't touch the ground.**

Vilas & Dani
Todd Lake, OR

YOUR PATH TO THE RIGHT HARNESS

Choose Your Activity

**Skiing, Snowboarding,
Working Dogs**



Web Master Pro™

The Web Master Pro Harness is a lift-and-assist harness designed to address the needs of professional avalanche and search and rescue teams.

**Hiking, Working Dogs,
Everyday**



Web Master™

The Web Master Harness is a supportive, multi-use harness built for maneuvering and assisting dogs up and over obstacles as well as for designated working dogs.

**Everyday, Trail Running,
Walking, Hiking**



Front Range®

The Front Range Harness is an everyday harness that is easy to put on and comfortable for dogs to wear.

Trail Running, Hiking



Hi & Light™

The Hi & Light Harness is a lightweight, low-profile adventure harness.

LIFE JACKETS

Inspired by Ruffwear dog Otis and a near-mishap in the late 90s on Kern River, we set out to make a reliable and safe canine life jacket. Our Float Coat provides a secure fit and balances flotation with unencumbered movement.

#mydogismy

River Runner





Float Coat™ Life Jacket

Premium, fully-featured life jacket including a strong handle optimally positioned to lift dogs out of the water and reflective trim for enhanced visibility in or out of the water.

KEY FEATURES:

- Natural swimming position made possible by strategically placed closed-cell foam panels
- Easy-to-clip, sheltered buckles keep straps firmly in place over time
- Water-compatible webbing remains stable in wet environments
- Strong, low-profile handle is optimally positioned to help dogs out of water
- Telescoping neck closure adjusts for a range of dog sizes and is permanently attached and secure
- Reflective trim for low-light visibility and light loop for attaching The Beacon™

COLORS: Blue Atoll | Sockeye Red | Wave Orange

Girth:	XXS	XS	S	M	L	XL
	13-17 in 33-43 cm	17-22 in 43-56 cm	22-27 in 56-69 cm	27-32 in 69-81 cm	32-36 in 81-91 cm	36-42 in 91-107 cm

800

Days on the Water

Tucker, a now-retired Conservation Canines scat detection dog that specialized in tracking whale scat in the Puget Sound, spent more than 800 days on the water in his yellow Float Coat™. Fun fact: Tucker didn't like to swim.



**Tucker's Float Coat
after 800 days.**



PACKS

Long days on the trail, carrying everything you need on your back, and sleeping outside make for some of the most memorable experiences. If your furry trail companion is ready to carry his or her own gear and you're wondering which pack to choose, we can help.

#mydogismy

Happy Camper





LOW-PROFILE HYDRATION

Our Singletrack™ Pack is a low-profile hydration pack designed for long days on the trail - or at work. Now available in red, a color commonly used by working dog communities.



**Sharing a moment while
backpacking in Central Oregon.**

Nala and Noel
Three Fingered Jack, OR



Palisades™ Pack

Removable saddlebags, two collapsible hydration bladders, and compression system. Ideal for multi-day backcountry adventures.

KEY FEATURES:

- Customizable fit with five points of adjustment allows for full range of motion
- Saddlebag attachment system uses aluminum hardware and Hypalon fasteners for a strong and secure connection
- Padded handle and non-slip girth straps offer good load dispersion for controlled and comfortable lifting
- Two points of leash connection: single-piece, anodized aluminum V-ring and webbing loop
- Cross-load compression system secures pack contents
- Two 1-liter, collapsible, BPA-free hydration bladders
- Trail-ready details: stash pockets and external gear loops
- Reflective trim for low-light visibility and light loop for attaching The Beacon™

COLOR: Red Currant



Approach™ Pack

Efficient load carrying with an integrated harness and radial cut saddlebags that create a passive compression system. Great for day hikes and overnight adventures.

KEY FEATURES:

- Customizable fit with five points of adjustment allows for full range of motion
- Radial cut, weight-forward saddlebag design creates passive compression that stabilizes pack contents
- Padded handle and non-slip girth straps offer good load dispersion for controlled and comfortable lifting
- Two points of leash connection: single-piece, anodized aluminum V-ring and webbing loop
- Trail-ready details: stash pockets and external gear loops
- Harness suspension system provides stability, comfort and fit
- Reflective trim for low-light visibility and light loop for attaching The Beacon™

COLORS: Meadow Green | Orange Poppy

	S	M	L/XL
Girth:	22-27 in 56-69 cm	27-32 in 69-81 cm	32-42 in 81-107 cm
Capacity:	762 in³ (12.5 L)	1,068 in³ (17.5 L)	1,465 in³ (24 L)
Weight:	1.75 lb (0.8 kg)	1.85 lb (0.84 kg)	2.15 lb (0.98 kg)

	XS	S	M	L/XL
Girth:	17-22 in 43-56 cm	22-27 in 56-69 cm	27-32 in 69-81 cm	32-42 in 81-107 cm
Capacity:	366 in³ (6 L)	762 in³ (12.5 L)	885 in³ (14.5 L)	1,465 in³ (24 L)
Weight:	0.8 lb (0.36 kg)	1.05 lb (0.48 kg)	1.15 lb (0.52 kg)	1.3 lb (0.59 kg)



Trails are better when shared.

Roo & Friends
Sedona, AZ



Singletrak™ Pack

Sleek, low-profile hydration pack features two collapsible water bottles and two stash pockets for adventure essentials. Ideal for long days on the trail.

KEY FEATURES:

- Customizable fit with five points of adjustment allows for full range of motion
- Low-profile side pockets conform to the body, allowing dogs to be agile
- Oversized handle for easy lift-and-assist
- Two leash attachment points: anodized aluminum V-ring and webbing loop
- Foam-padded chest and belly straps for comfortable, extended wear
- Two 0.6-liter collapsible, BPA-free hydration bladders
- Reflective trim for low-light visibility and light loop for attaching The Beacon™

COLORS: Blue Dusk | Red Currant

	S	M	L/XL
Girth:	22-27 in 56-69 cm	27-32 in 69-81 cm	32-42 in 81-107 cm
Capacity:	183 in³ (3 L)	201 in³ (3.3 L)	287 in³ (4.7 L)
Weight:	0.7 lb (0.32 kg)	0.91 lb (0.41 kg)	1.05 lb (0.48 kg)

YOUR PATH TO THE RIGHT DOG PACK

Choose Your Activity

**Day Hiking,
Camping**



Approach™

A comfortable, everyday pack that is great for day hikes and overnight adventures.

**Multi-Day Hiking,
Backpacking, Camping**



Palisades™

Perfect for multi-day backcountry adventures with removable saddlebags, two collapsible hydration bladders, and a cross-load compression system.

**Hiking, Mountain
Biking, Trail Running**



Singletrak™

A sleek, low-profile hydration pack to help keep dogs hydrated for the long haul.

SAFETY

Our dog safety gear enhances adventures by adding visibility and security. Reflective trim on apparel and a waterproof, rechargeable safety light help dogs stay safe by being seen. Our Load Up™ Harness keeps dogs secure during vehicle travel, and our Float Coat™ adds comfortable buoyancy during water activities.

#mydogismy

Freedom Seeker





WATERPROOF, RECHARGEABLE, AND AUDIBLE

We added audible accessibility to our waterproof, rechargeable safety light so it can be used by the blind and visually impaired.



Track Jacket™

High-visibility, reflective jacket built with durable, waterproof polyester fabric features reflective accent panels along the sides and in the chest martingale to enhance visibility on all sides.

KEY FEATURES:

- High-visibility blaze orange fabric
- Maximum visibility with reflective side panels
- Light loop for attaching The Beacon™
- Straightforward, streamlined design is easy to put on and stays in place
- Lightweight, low-profile side-release buckles provide a quick and secure connection
- Durable, waterproof polyester fabric

COLOR: Blaze Orange



The Beacon™ Safety Light

Rechargeable safety light keeps dogs visible in low-light conditions. Durable and waterproof, it clips to Ruffwear collars and other gear. Easily cycle through three LED color options and three light modes.

KEY FEATURES:

- Rated IPX7 waterproof to a depth of 1m for 30 minutes
- High-capacity, USB rechargeable battery
- Translucent shell exudes light from all angles
- Variable light modes:
 - *Slow Flash*
 - *Fast Flash*
 - *Always On*
- Three light colors: red, green and blue
- Includes standard, universal 15 cm USB charging cord
- Easy-to-use Quick Clip compatible with all Ruffwear collars and apparel light loops

COLOR: Clear Lake

Girth:

XXS/XS	S/M	L/XL
13-22 in 33-56 cm	22-32 in 56-81 cm	32-42 in 81-107 cm

Dimensions: 1.8 x 1.6 x 1.0 in (46 x 41 x 24 mm)

NEW



Audible Beacon™ Safety Light

Waterproof, rechargeable safety light with audible accessibility. Silicone mount is compatible with guide dog harnesses and canes.

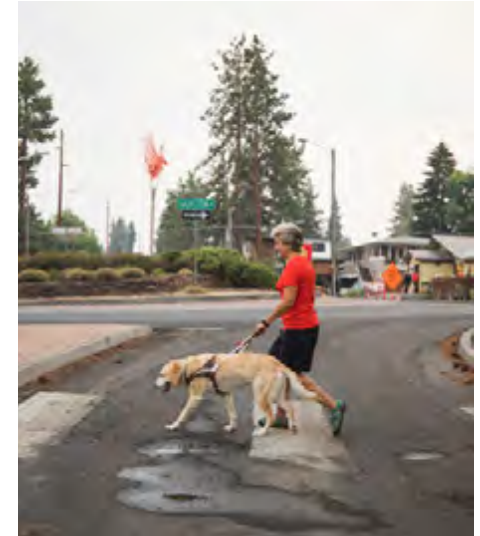
KEY FEATURES:

- Rated IPX7 waterproof to a depth of 1m for 30 minutes
- 280mAh LiPro battery is charged with the included standard 15 cm USB cable. Charge time is approximately 1.5 hrs.
- Operating time up to 12 hours
- Rapid flash and audible indications when battery needs to be recharged
- Audible signals to indicate on/off, low battery, charging, and charge complete
- Audible reminder beeps every 10 minutes while Beacon is on and every 5 minutes in low battery mode
- Translucent red shell exudes light from all angles
- Silicone mount compatible with guide dog harness handles and canes
- Easy-to-use Quick Clip™ compatible with all Ruffwear collars and apparel light loops

COLOR: Red Currant

INSPIRING CONFIDENCE THROUGH VISIBILITY

Nancy and Abbie, Ruffwear friends and product testers, were waiting at a bus stop in the dark. The bus approached...and then passed right on by. The bus driver could not see our friends waiting in the dark, and Nancy could not see the bus. Designed with the entire blind community in mind, the Audible Beacon inspires confidence by helping people be seen.



Nancy & Abbie

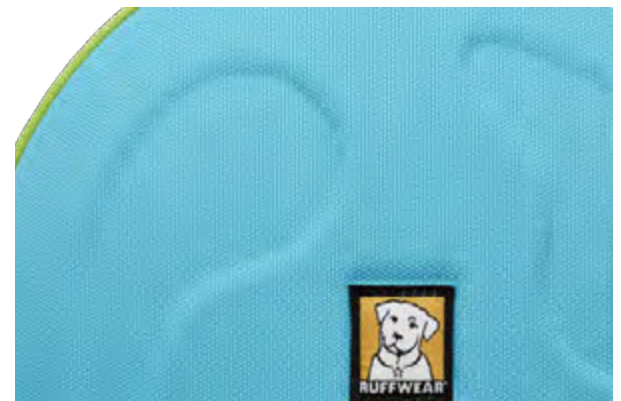
Dimensions: 1.8 x 1.6 x 1.0 in (46 x 41 x 24 mm)

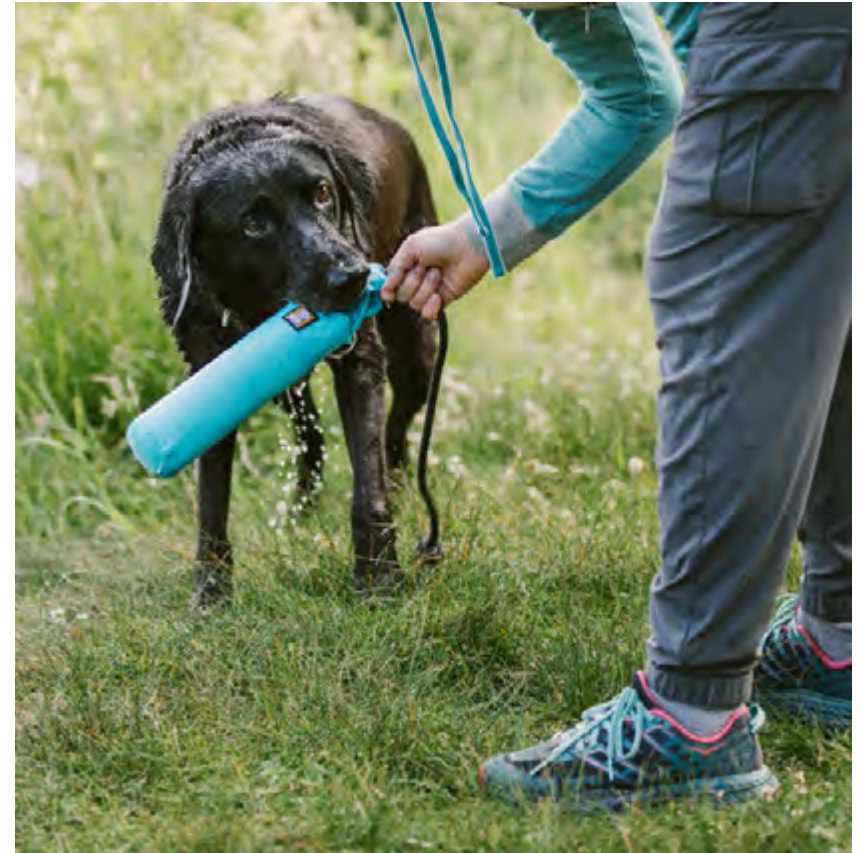
TOYS

Toys provide essential exercise, mental stimulation, and human-canine bonding over play. Our durable interactive dog toys made from natural, sustainable rubber and tough ripstop fabrics endure countless games of fetch, chase, catch, and tug.

#mydogismy

Ball of Energy

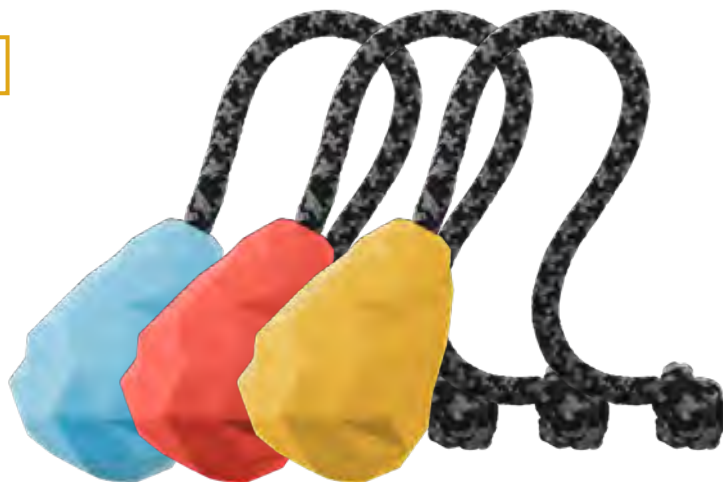




GNAWT. KNOTTED.

We took our popular Gnawt-a-Cone™ and added a knotted rope handle, providing excellent grip during training drills and rewarding play.

NEW



Huck-a-Cone™ Toy

Inspired by rewarding play between avalanche rescue dogs and handlers during training.

KEY FEATURES:

- Knotted rope handle makes it easy to throw and tug
- 11 mm kernmantle rope
- Made from natural rubber, a renewable, sustainable resource

COLORS: Metolius Blue | Sockeye Red | Dandelion Yellow



Gnawt-a-Stick™ Toy

Sustainable, natural latex rubber toy inspired by Oregon coastal driftwood. Bounces erratically for an engaging game of fetch, floats at an angle for visibility and easy water retrieval.

KEY FEATURES:

- Durable, chew-resistant
- Erratic bounce for engaging fetch
- Engineered to float at an angle for increased visibility
- Made from natural rubber, a renewable, sustainable resource

COLORS: Metolius Blue | Sockeye Red | Dandelion Yellow

Dimensions: 3 x 4 in (7.5 x 10 cm)

Dimensions: 1.5 x 11.8 in (4 x 30 cm)



Gnawt-a-Rock™ Toy

Sustainable, natural latex rubber toy inspired by rapidly cooling lava formations from Pacific Northwest volcanoes. Irregular shape for erratic bounce, dispenses kibble or treats for interactive feeding, play and reward.

KEY FEATURES:

- Durable, chew-resistant
- Erratic bounce for engaging fetch
- Internal chamber dispenses kibble or small training treats
- Size suitable for large-mouthed dogs
- Made from natural rubber, a renewable, sustainable resource

COLORS: Metolius Blue | Sockeye Red | Dandelion Yellow

Diameter: 4.5 in (11.5 cm)



Gnawt-a-Cone™ Toy

Sustainable, natural latex rubber toy inspired by Central Oregon's Ponderosa pine trees. Durable shape creates a fun, erratic bounce, while easy-to-clean internal chamber holds peanut butter or large treats.

KEY FEATURES:

- Durable, chew-resistant
- Erratic bounce for engaging fetch
- Easy-to-clean inner chamber holds large biscuits and peanut butter
- Treat-dispensing design for interactive play
- Made from natural rubber, a renewable, sustainable resource

COLORS: Metolius Blue | Sockeye Red | Dandelion Yellow

Dimensions: 3 x 4 in (7.5 x 10 cm)



Hydro Plane™ Toy

Soft, lightweight floating fabric disc for fetch in or around water and snow. Lightweight, pontoon-like construction floats high atop water and snow for easy visibility and retrieval in any season.

KEY FEATURES:

- Buoyant foam disc floats on top of the water and snow for increased visibility
- Gentle on dog's mouth and maintains shape
- Oversized for easy pick up and visibility
- Abrasion-resistant materials for increased durability

COLORS: Blue Atoll | Sockeye Red



Hover Craft™ Toy

Durable flying disc with molded foam core tracks true for longer-distance tosses and floats on water. Bright colors and integrated reflectivity for visibility in low-light conditions.

KEY FEATURES:

- Excellent flight performance with molded, foam core
- Confidence-inspiring soft construction is easy on dog's teeth and gums
- Abrasion-resistant materials for increased durability
- Reflective trim for low-light visibility

COLORS: Blue Atoll | Sockeye Red

Diameter: 12 in (30 cm)

Diameter: 9 in (23 cm)



Lunker™ Toy

A floating toy with rope handle designed for playing fetch and tug on both water and land.

KEY FEATURES:

- Rope handle makes it easy to throw great distances for fetching on land and water
- Recycled PLUSfoam® core ensures excellent flotation
- PLUSfoam® is 100% recyclable through the PLUSfoam Reclaim & Recycle Program: <https://plusfoam.com/brands/ruffwear>
- Abrasion-resistant materials for increased durability

COLORS: Blue Atoll | Sockeye Red

Dimensions: 2.5 x 12 in (6 x 31 cm)



If you never stop throwing my Lunker, that will be soon enough.

Artie & Susan
Deschutes River, OR



Wiley keeps his eye on the prize.

Wiley & Emily
Arnold Ice Cave, OR



Turnup™ Toy

Sustainable, natural latex rubber toy that's almost round, so it bounces in all directions. Compatible with ball throwers.

KEY FEATURES:

- Durable, chew-resistant
- Gum-massaging design
- Internal chamber holds kibble or small training treats and whistles in flight
- Two-hole design prevents suction
- Tennis ball-sized toy fits in standard-sized ball thrower
- Made from natural latex rubber, a renewable, sustainable resource

COLORS: Metolius Blue | Sockeye Red | Dandelion Yellow

Diameter: 2.5 in (6 cm)



Huckama™ Toy

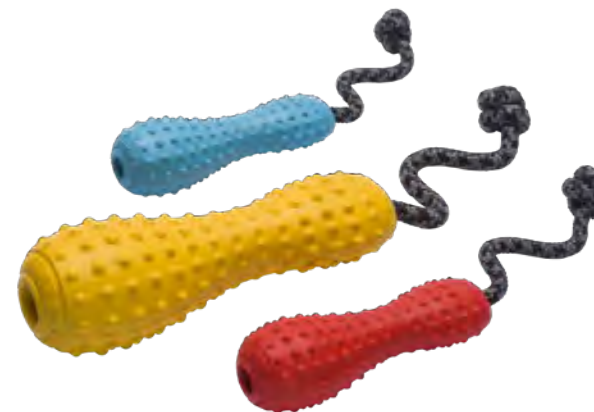
Sustainable, natural latex rubber toy keeps dogs engaged with its erratic bounce and roll. Durable, hollow design accepts food for treat rewards and whistles when hurled through the air.

KEY FEATURES:

- Durable, chew-resistant
- Erratic bounce for engaging fetch
- Internal chamber holds kibble or small training treats and whistles in flight
- Size suitable for large-mouthed dogs
- Made from natural latex rubber, a renewable, sustainable resource

COLORS: Metolius Blue | Sockeye Red | Dandelion Yellow

Diameter: 3 in (8 cm)



Gourdo™ Toy

Sustainable, natural latex rubber toy designed for interactive play, from tugging to throwing. Kernmantle rope lanyard makes it easy to throw and pick up, while avoiding the slobbery end.

KEY FEATURES:

- Rope handle makes it easy to throw great distances for fetching
- Made from natural latex rubber, a renewable, sustainable source

COLORS: Metolius Blue | Sockeye Red | Dandelion Yellow

	S	L
Diameter:	1.75 in (4 cm)	2.5 in (6 cm)
Length:	5.25 in (13 mm)	8 in (20 mm)

HUMAN GEAR

Our human gear - a convenient pick-up bag dispenser, vehicle seat cover, dog gear bag, and more - takes care of the details so you can focus on what's important: making memories outside with your best friend.

#mydogismy

Constant Companion





TREATS OF THE TRADE

All working dogs begin as puppies learning basic obedience, which is why our waist-worn Treat Trader™ makes a great hands-free tool for any human and canine duo.



Treat Trader™

Waist-worn treat bag for hands-free training and quick access to treats. Opens easily with the pull of a tab and snaps closed with an audible cue from the secure magnetic closure.

KEY FEATURES:

- Quick-access, waist-worn treat bag featuring one-handed, secure magnetic closure with audible cue
- Durable, water-resistant shell fabric and lightweight, waterproof lining
- Ergonomic fit for all-day comfort
- Small outer pocket stores small essentials and features a clicker-compatible loop
- Adjustable belt for customizable fit or belt clip for direct attachment to waist

COLOR: Twilight Gray



Stash Bag™

Convenient pick-up bag dispenser that attaches to any Ruffwear leash. Features zippered pocket for essentials and eyelet on the back for quick access to a roll of pick-up bags. Includes 15 Earth Rated® bags.

KEY FEATURES:

- Pick-up bag storage and dispensing system includes Earth Rated® pick-up bag cartridge with 15 bags
- One interior stretch-mesh organizing pocket for small essentials and internal key hook
- One exterior stretch-mesh pocket for quick-grab items
- Easy on/off with side-release buckle and hook and loop stabilizing strap
- Can be attached to hand-held or waist-worn leash

COLORS: Twilight Gray | Meadow Green | Orange Poppy

Adjustable Belt: 30 to 48 in (76.2-121.9 cm)
Opening: 6 in x 5.3 in x 4.9 in (15.5 cm x 13.5 cm x 12.5 cm)

Dimensions: 6.3 in x 4.3 in x 1.2 in (16 cm x 11 cm x 3 cm)



**Leaving the high desert better
than they found it.**

Millie & Jen
Bend, OR



Dirtbag™ Seat Cover

Durable, waterproof, machine-washable vehicle seat cover that can be installed in a bench or hammock configuration. Secure attachments keep the cover in place, non-slip fabric keeps dogs stable.

KEY FEATURES:

- Protects vehicle seat from dog adventures
- Tear-resistant, waterproof and comfortable fabric
- Grip coating on back surface keeps cover in place
- Convertible design fits many vehicles in bench and hammock configurations
- Attaches via stuffer cleats that secure to seat and webbing loops that wrap around headrests
- Side flaps keep grunge off seats during entry and exit
- Integrated seatbelt access points open when needed and are closed when not in use
- Integrated, zippered pocket to store small items like leashes and treats
- Machine washable

COLORS: Granite Gray | Trailhead Brown



BENCH



HAMMOCK

Width: 55 in (140 cm) **Length:** 63 in (159 cm)



Haul Bag™

Wide-opening gatemouth bag stores food, bowls, leashes, toys, and pick-up bags. Interior and exterior zippered and mesh pockets keep gear organized. ID sleeve displays important information.

KEY FEATURES:

- Wide gatemouth opening for easy loading and access
- Keeps gear organized with multiple interior and exterior pockets
- Durable, long-lasting polyester outer fabric
- Display important info in the ID sleeve

COLOR: Forest Green

Volume: 25 L



Trail Runner™ System

Comfortable, hands-free hip belt and leash system allows easy access and carrying of essentials. Includes shock-absorbing Ridgeline™ Leash and BPA-free 21 ounce Ruffwear bottle.

KEY FEATURES:

Human Hip Belt:

- Comfortable, bounce-free, load-dispersing design
- Intuitive leash attachment release for quick disconnect
- Zippered, water-resistant pocket
- Stretch mesh pocket for quick access to essentials
- 21 oz (0.6 L) BPA-free Ruffwear water bottle
- Reflective trim for low-light visibility and light loop for attaching The Beacon™

Leash:

- Ruffwear's Wavelength™ webbing absorbs shock
- Swiveling Crux Clip™ is strong, secure and provides one handed attachment

COLOR: Granite Gray

Human Waist Size: 25-45 in (64-114 cm)

Leash Length: 3.3-5.9 ft (1-1.8 m)



Ruffwear® T-shirts

Let the world know you and your furry friend are part of the Ruffwear pack.

KEY FEATURES:

- Soft, comfortable cotton/polyester blend t-shirt with two original designs:
 - Ruffwear Logo in Charcoal Heather
 - Shaped by Adventure in Navy Heather
- Screen printed label
- Preshrunk

COLORS: Charcoal Heather | Navy Heather



Ruffwear® Mountain Trucker Hat

Your canine companion doesn't have to gear up alone. Show that you're part of the pack with the Ruffwear Mountain Trucker Hat.

KEY FEATURES:

- Adjustable fit with pliable bill
- Moisture-wicking headband
- Mesh back for breathability

COLOR: Charcoal

Mens: S-XL

Womens: XS-XL

FORWARD.

Ruffwear believes in and supports the critical role of working dogs in our society. From running paths in New York, to ski slopes across the country, from remote wildernesses to daily life, and so many places in between, highly skilled working dogs assist humans through invaluable service.

For years, Ruffwear has collaborated with organizations like Wasatch Backcountry Rescue, Colorado Rapid Avalanche Deployment (C-RAD), and Conservation Canines, to better understand the work these dogs do and to provide the gear they need to perform.

In developing new product offerings for Spring 2019, Ruffwear collaborated with guide dog schools and service dog schools for insight, testing, and feedback. Through these partnerships, we have continued expanding our knowledge and understanding of working dogs' needs.

We hope you'll join us as we continue developing gear to meet the needs of working dogs and their human companions - and sharing their stories along the way.





PARTNERSHIPS in shared beliefs

As a member of The Conservation Alliance, Ruffwear and other outdoor businesses contribute to a central fund, which is then distributed through grant funding to organizations working to protect and restore wild lands and waterways in North America.

Together with Best Friends Animal Society, we launched the Ruff Adventure Dog (RAD) Adoption Program to help more than 70 fresh air-seeking, high-energy dogs find active, loving homes.

Through these partnerships, we can make an impact, creating opportunities that strengthen the bond between humans and their dogs, and ensuring a lifetime of adventures to come.



Photo: Mason Cummings, The Wilderness Society



**The Conservation
Alliance**

Outdoor Business Giving Back to the Outdoors



This workbook refers to the following trademarks: Best Friends®, registered trademark of Best Friends Animal Society; Vibram® Ictrek®, registered trademarks of Vibram S.p.A.; Thermore®, a registered trademark of Thermore S.p.A.; YKK®, a registered trademark of YKK, Inc.; PLUSfoam™, a registered trademark of PLUSfoam™ Compound Technologies, LLC, and Ruffwear® For Dogs on the Go® Performance Dog Gear®, registered trademarks of Ruffwear, Inc. Ruffwear reserves the right to change styles, colors, sizes, and prices.

All photos © Ruffwear. In studio photography: Sandbox Studios.
Lifestyle photography: Elena Pressprich and Steve Tague Studios.
Additional photography: Jay Dash Photography.
© 2018 Ruffwear. All rights reserved.



Customer Service

bark@ruffwear.com
888-783-3932
2843 NW Lolo Drive
Bend, OR 97703 USA