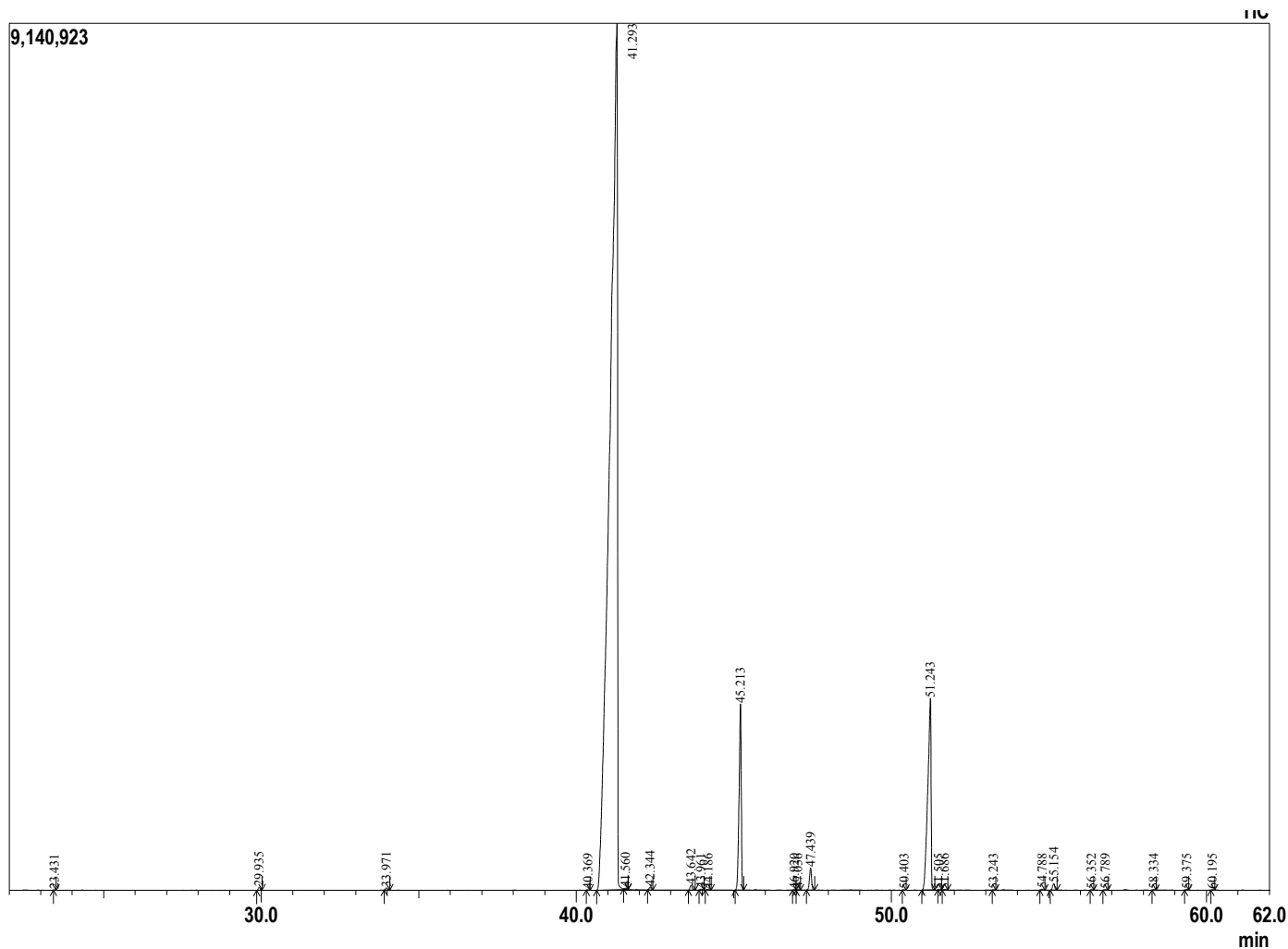


Analyzed by : Dr. Prabodh Satyal
Analyzed : 4/5/2018 8:22:32 AM
Sample Type : Essential Oil
Sample Name : Clove
Lot# : 18000180
Injection Volume : 0.20

Sample Information



R.Time	Name	Peak Report TIC	Area%
23.431	Linalool		0.00
29.935	Methyl salicylate		0.06
33.971	Chavicol		0.06
40.369	Cubebene<alpha->		0.01
41.293	Chavibetol		85.04
41.560	Eugenol <dihydro->		0.02
42.344	Copaene<alpha->		0.07
43.642	Vanillin		0.12
43.961	Methyleugenol		0.03
44.186	Longipinene <beta->		0.02
45.213	Caryophyllene(E-)		5.29
46.920	Isoeugenol<E->		0.02
47.036	Spirolepechinene		0.03
47.439	Humulene<alpha->		0.60
50.403	Farnesene<(E,E)-alpha->		0.01
51.243	Eugenol acetate		8.30
51.505	Calamenene<trans->		0.01
51.686	Guaiacyl acetone		0.02
53.243	Isocaryophyllene oxide		0.01
54.788	Caryophyllenyl alcohol		0.03
55.154	Caryophyllene oxide		0.18
56.352	Fokienol		0.01
56.789	Humulene epoxide II		0.02
58.334	Caryophylla-4(12),8(13)-dien5-beta-ol		0.01
59.375	Cadinol<alpha->		0.01
60.195	Caryophyllene<14-hydroxy-9-epi-(E)->		0.01
			100.00



Comments:
 The analysis of this Clove batch sample meets the expected chemical profile of authentic essential oil of *Eugenia caryophyllus*.

Copyright © 2018 by Aromatic Plant Research Center (APRC). All rights reserved.
 The information contained in this document may not be used, published or redistributed, including online, without the prior written consent of APRC.

Reviewed by: Ambika Poudel