

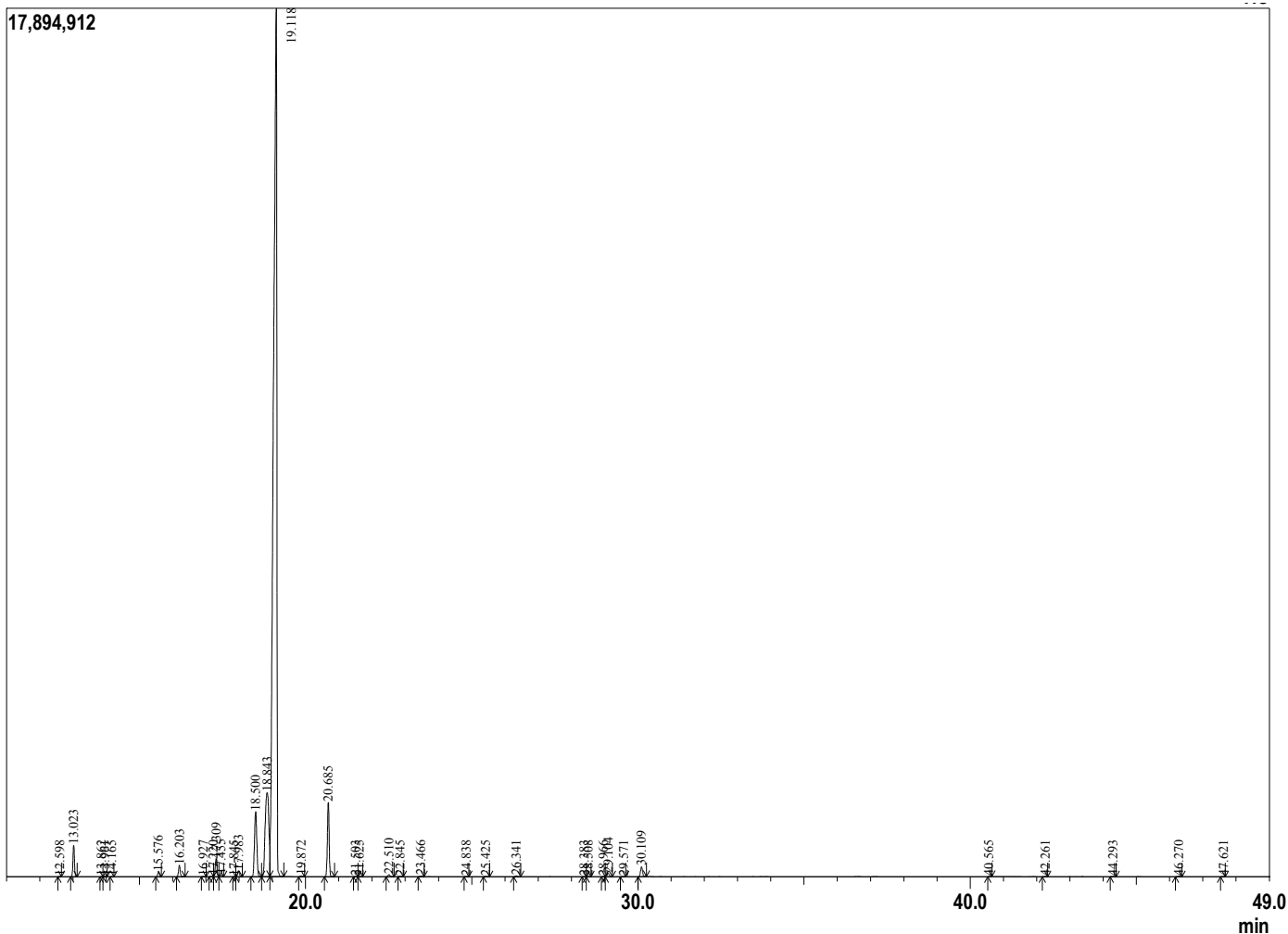
### Sample Information

Analyzed by : Dr. Prabodh Satyal  
 Analyzed : 3/3/2018 8:46:23 AM  
 Sample Type : Essential Oil  
 Sample Name : Eucalyptus  
 Lot# : 18000201  
 Injection Volume : 0.10



### Peak Report TIC

R.Time	Name	Area%
12.598	Thujene<alpha>	0.01
13.023	Pinene <alpha>	1.28
13.862	Fenchene <alpha>	0.01
13.961	Camphene	0.02
14.165	Thuja-2,4(10)diene	0.01
15.576	Pinene <beta>	0.22
16.203	Myrcene	0.53
16.927	Menthene<2-p>	0.01
17.220	Linalool oxide <dehydro>	0.04
17.309	Phellandrene <alpha>	0.84
17.455	3-Carene	0.09
17.845	1,4-Cineole	0.00
17.983	Terpinene <alpha>	0.29
18.500	Cymene<para>	4.14
18.843	Limonene	8.46
19.118	Cineole <1,8>	79.27
19.872	Ocimene <E-beta>	0.05
20.685	Terpinene <gamma>	3.58
21.503	Linalool oxide <cis-(furanoid)>	0.01
21.625	Pinol	0.01
22.510	Terpinolene	0.12
22.845	Cymenene<p->	0.02
23.466	Linalool	0.04
24.838	Fenchol<endo>	0.01
25.425	Ocimene <allo>	0.03
26.341	Pinocarveol <trans(-)>	0.05
28.383	Terpineol <delta>	0.02
28.508	Borneol	0.01
28.966	1,8-menthadien-4-ol <para>	0.01
29.104	Terpinen-4-ol	0.19
29.571	Mentha-1(7),8-dien-2-ol<trans-p->	0.01
30.109	Terpineol <alpha>	0.54
40.565	Eucalyptus	0.01
42.261	Copaene <alpha>	0.01
44.293	Gurjunene <alpha>	0.02
46.270	Aromadendrene	0.04
47.621	Alloaromadendrene	0.01
		100.00



**Comments:**  
 The analysis of this Eucalyptus batch sample meets expected chemical profile of authentic essential oil of Eucalyptus globulus.

Copyright © 2018 by Aromatic Plant Research Center (APRC). All rights reserved. The information contained in this document may not be used, published or redistributed, including online, without the prior written consent of APRC.

Reviewed by: Ambika Poudel