

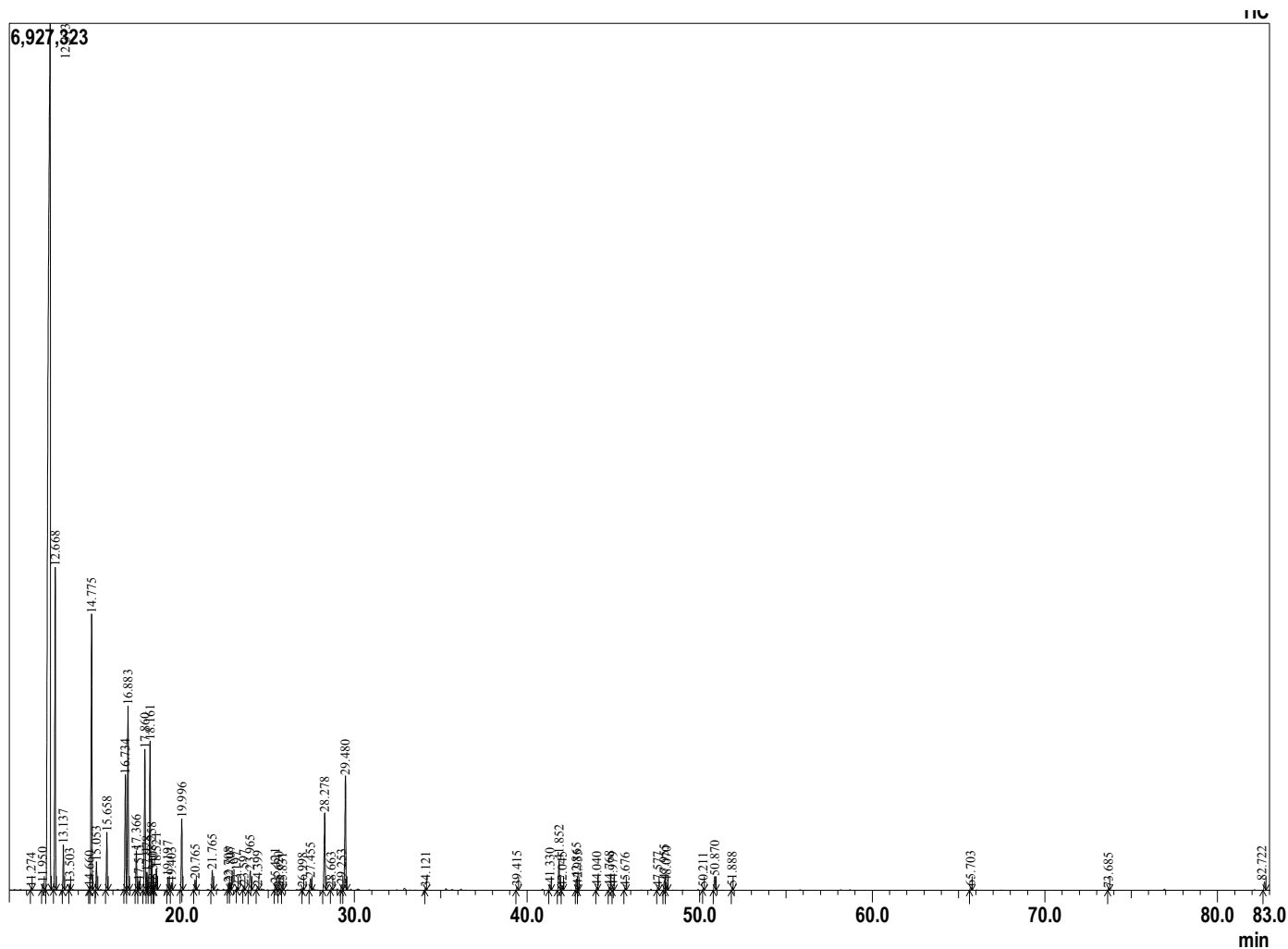
Sample Information

Analyzed by : Dr. Prabodh Satyal
 Analyzed : 2/15/2019 10:51:06 PM
 Sample Type : Essential Oil
 Sample Name : Frankincense
 Lot# : 19000455
 Injection Volume : 0.30



Peak Report TIC

R.Time	Name	Area%
11.274	Bomene-2	0.04
11.950	Pinene isomer	0.17
12.373	Thujene <alpha->	52.81
12.668	Pinene <alpha->	6.86
13.137	Thujadiene	0.85
13.503	Camphene	0.11
14.660	Cyclopentene <isomer>	0.05
14.775	Sabinene	6.69
15.053	Pinene <beta->	0.58
15.658	Myrcene	1.23
16.734	Phellandrene <alpha->	2.84
16.883	Carene<delta-3->	4.31
17.366	Terpinene <alpha->	0.87
17.515	Cymene <ortho>	0.20
17.860	Cymene <para->	3.37
17.978	Furan <acetyl-methyl>	0.41
18.161	Limonene	3.64
18.258	Phellandrene <beta->	0.64
18.340	1,8-cineole	0.05
18.521	Ocimene <Z-beta>	0.48
19.197	Ocimene <E-beta>	0.30
19.403	Thujol	0.18
19.996	Terpinene <gamma>	1.69
20.765	Sabinene hydrate <cis>	0.24
21.765	Terpinolene	0.48
22.708	Linalool	0.16
22.807	Sabinene hydrate <trans>	0.19
23.197	Thujone<cis->	0.06
23.597	2,4 Heptadienal<2,4-dimethyl>	0.10
23.965	Thujone<trans->	0.62
24.399	Menth-2-en-1-ol <cis-p>	0.11
25.421	Sabinol<E>	0.13
25.620	Menth-2-en-1-ol <trans-p>	0.04
25.831	Verbenol<trans->	0.05
26.998	Mentha-1,5-dien-8-ol <para>	0.05
27.455	Phellandrene alpha <epoxide>	0.31
28.278	Terpinen-4-ol	2.12
28.663	Cymen-8-ol<para->	0.06
29.253	Terpineol <alpha>	0.16
29.480	Methyl chavicol	3.20
34.121	Frankincense	0.06
39.415	Terpinyl acetate<alpha>	0.10
41.330	Copaene <alpha>	0.18
41.852	Bourbonene <alpha>	0.86
42.045	Bourbonene <beta>	0.06
42.865	Methyleugenol	0.34
42.935	Caryophyllene <cis>	0.09
44.040	Ylangene <beta.>	0.07
44.768	Copaene <beta>	0.10
44.979	Bergamotene <trans-alpha>	0.07
45.676	Muurolo-3,5-diene <cis>	0.06
47.577	Cadina-1(6),4-diene <trans>	0.07
47.955	Germacrene D	0.30
48.070	Himachalene<gamma>	0.23
50.211	Cadinene <delta->	0.05
50.870	Kessane	0.42
51.888	Elemicin	0.06
65.703	Phellandrene<alpha-dimer>	0.10
73.685	Cembrene A<3E>	0.05
82.722	Serratol	0.26
		100.00



Comments:
 The analysis of this Frankincense Oil batch sample meets the expected chemical profile of authentic essential oil of *Boswellia serrata*.

Copyright © 2018 by Aromatic Plant Research Center (APRC). All rights reserved. The information contained in this document may not be used, published or redistributed, including online, without the prior written consent of APRC.

Reviewed by: Ambika Poudel