

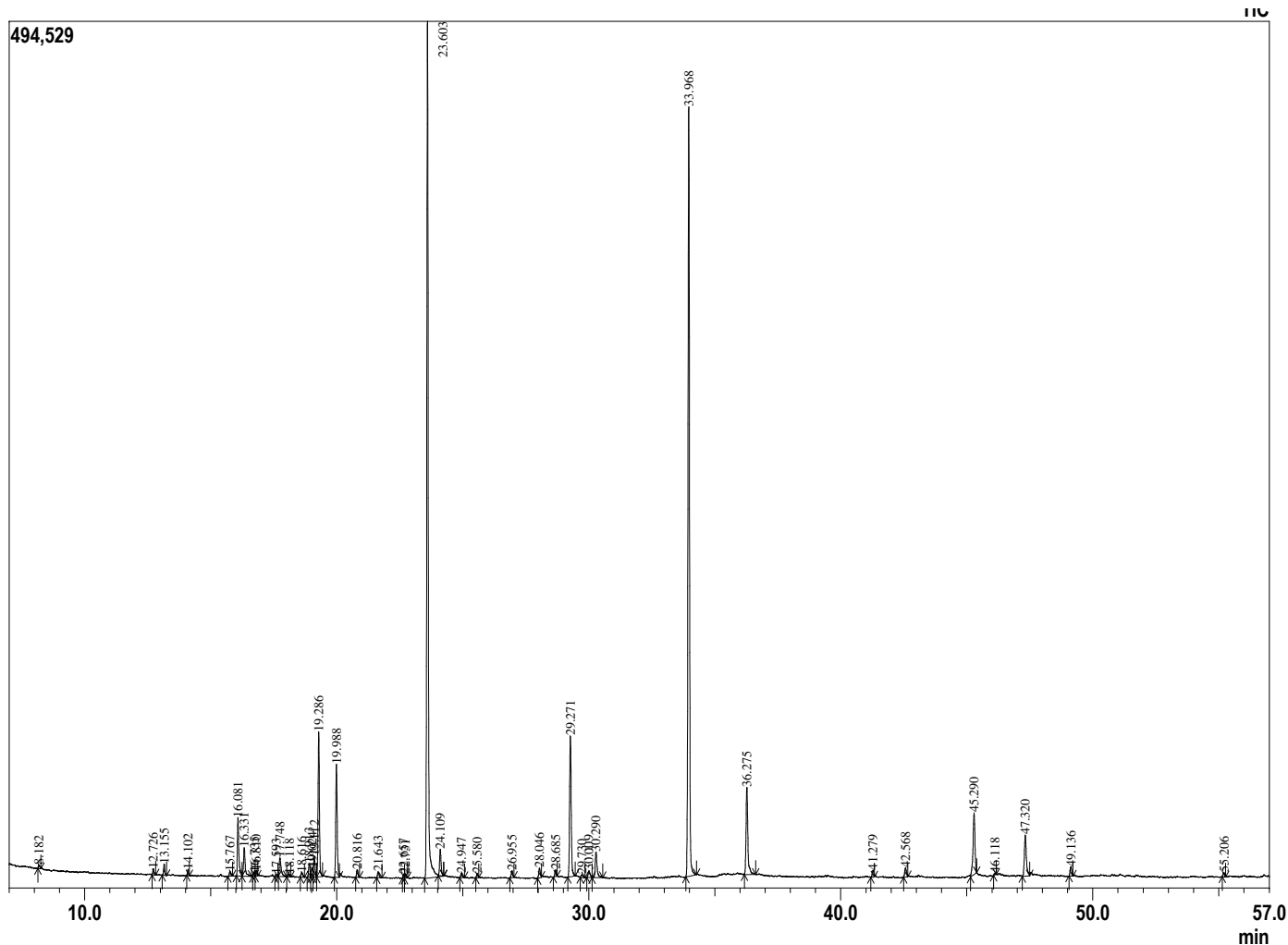
Sample Information

Analyzed by : Dr. Prabodh Satyal
 Analyzed : 10/15/2018 10:33:46 PM
 Sample Type : Essential Oil
 Sample Name : Lavender, Bulgaria
 Lot# : 18000389
 Injection Volume : 0.10



Peak Report TIC

R.Time	Name	Area%
8.182	Hexane, 1-methoxy->	0.15
12.726	Thujene <alpha->	0.19
13.155	Pinene<alpha->	0.36
14.102	Camphene	0.16
15.767	Octen-3-ol<1->	0.19
16.081	Octanone<3->	2.18
16.331	Myrcene	1.29
16.735	Butyl butanoate	0.13
16.810	Octanol<3->	0.23
17.593	Carene<delta-3->	0.07
17.748	Hexyl acetate	0.90
18.118	Terpinene <alpha>	0.10
18.616	Cymene <para>	0.20
18.913	Limonene	0.49
19.024	Phellandrene <beta>	0.32
19.112	1,8-cineole	0.75
19.286	Ocimene<(Z)-beta->	5.04
19.988	Ocimene<(E)-beta->	4.18
20.816	Terpinene <gamma>	0.27
21.643	Linalool oxide <cis-(furanoid)>	0.26
22.657	Terpinolene	0.14
22.731	Linalool oxide <trans-furanoid>	0.13
23.603	Linalool	32.44
24.109	Octen-3-yl acetate<1>	1.03
24.947	Octanol acetate<3->	0.16
25.580	Ocimene <allo>	0.16
26.955	Camphor	0.26
28.046	Lavandulol	0.40
28.685	Borneol	0.23
29.271	Terpinen-4-ol	5.80
29.730	Cryptone	0.14
30.009	Hexyl butanoate	0.33
30.290	Terpineol <alpha>	1.24
33.968	Linalyl acetate	29.56
36.275	Lavandulyl acetate	3.98
41.279	Neryl acetate	0.27
42.568	Geranyl acetate	0.43
45.290	Caryophyllene <trans>	3.03
46.118	Bergamotene<alpha-trans->	0.05
47.320	Farnesene<(E)-beta->	2.15
49.136	Germacrene D	0.40
55.206	Caryophyllene oxide	0.17
		100.00



Comments:
 The analysis of this Lavender Oil batch sample meets the expected chemical profile of authentic essential oil of *Lavandula angustifolia*.

Copyright © 2018 by Aromatic Plant Research Center (APRC). All rights reserved. The information contained in this document may not be used, published or redistributed, including online, without the prior written consent of APRC.

Reviewed by: Ambika Poudel