

### Sample Information

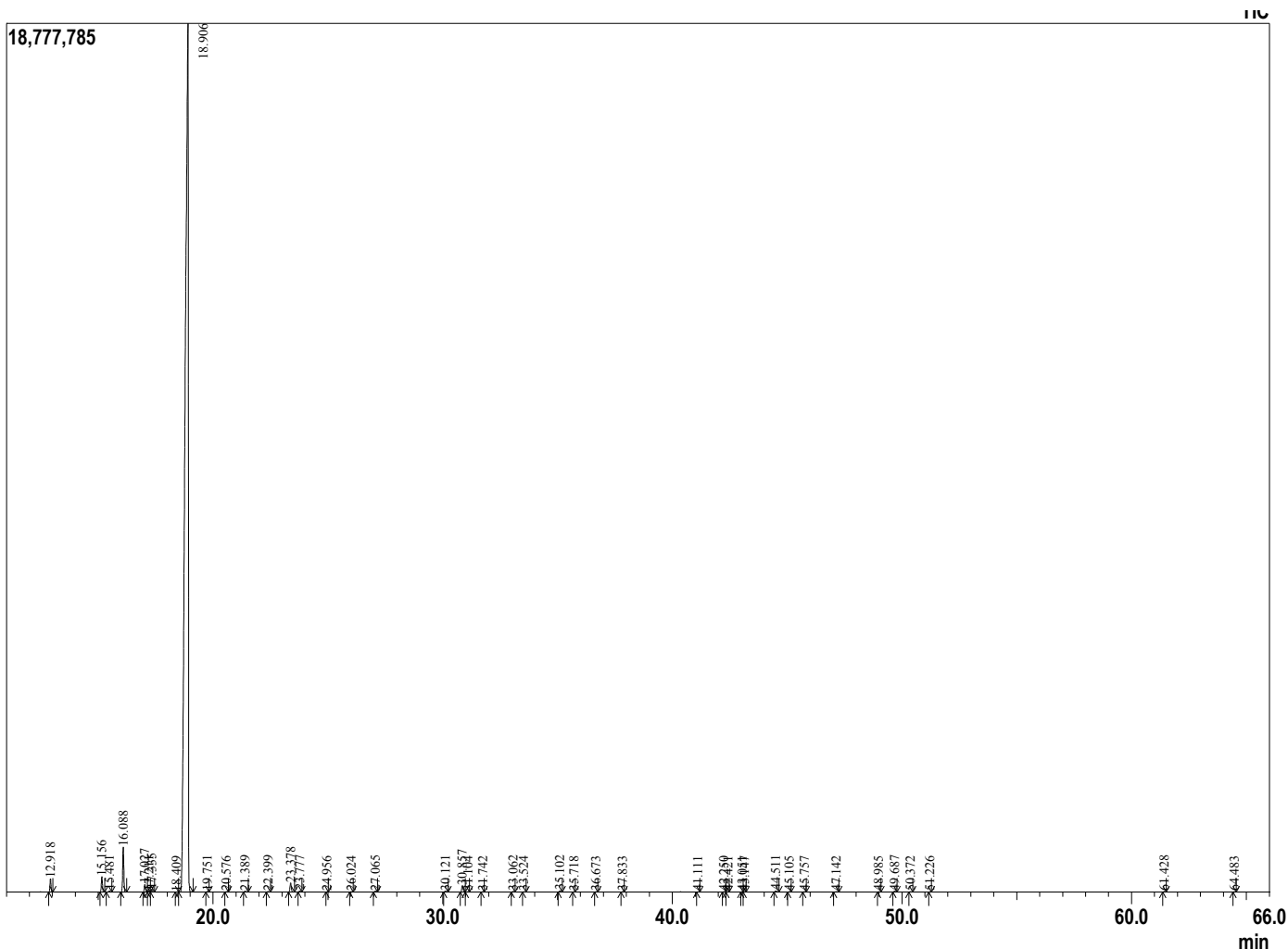
Analyzed by : Dr. Prabodh Satyal  
 Analyzed : 4/30/2018 4:36:16 PM  
 Sample Type : Essential Oil  
 Sample Name : Orange  
 Lot# : 18000251  
 Injection Volume : 0.20



**APRC**  
 Aromatic Plant Research Center

### Peak Report TIC

R.Time	Name	Area%
12.918	Pinene<alpha->	0.46
15.156	Sabinene	0.58
15.481	Pinene<beta->	0.05
16.088	Myrcene	1.74
17.027	Octanal<n->	0.32
17.211	Phellandrene<alpha->	0.04
17.335	Carene<delta-3->	0.11
18.409	Cymene <para->	0.01
18.906	Limonene	95.30
19.751	Ocimene<(E)-beta->	0.02
20.576	Terpinene<gamma->	0.02
21.389	Octanol<n->	0.04
22.399	Terpinolene	0.02
23.378	Linalool	0.40
23.777	Nonanal	0.04
24.956	Mentha-2,8-dien-1-ol<trans-para->	0.00
26.024	Limonene oxide<trans->	0.02
27.065	Citronellal	0.05
30.121	Terpineol<alpha->	0.04
30.857	Decanal	0.31
31.104	Octyl acetate	0.01
31.742	Carveol<cis->	0.01
33.062	Neral	0.03
33.524	Carvone	0.01
35.102	Geranial	0.06
35.718	Perillaldehyde	0.01
36.673	Limonen-10-ol	0.01
37.833	Undecanal	0.01
41.111	Neryl acetate	0.01
42.250	Copaene <alpha>	0.01
42.421	Geranyl acetate	0.01
43.051	Cubebene<beta->	0.01
43.147	Elemene<beta->	0.01
44.511	Dodecanal	0.06
45.105	Caryophyllene(E-)	0.02
45.757	Copaene<beta->	0.01
47.142	Farnesene<(E)-beta->	0.02
48.985	Germacrene D	0.01
49.687	Valencene	0.04
50.372	Farnesene<(E,E)-alpha->	0.01
51.226	Cadinene <delta>	0.01
61.428	Sinensal<beta->	0.03
64.483	Sinensal<alpha->	0.01
		100.00



**Comments:**  
 The analysis of this Orange batch sample meets the expected chemical profile of authentic essential oil of Citrus sinensis.

Copyright © 2018 by Aromatic Plant Research Center (APRC). All rights reserved.  
 The information contained in this document may not be used, published or redistributed, including online, without the prior written consent of APRC.

Reviewed by: Ambika Poudel