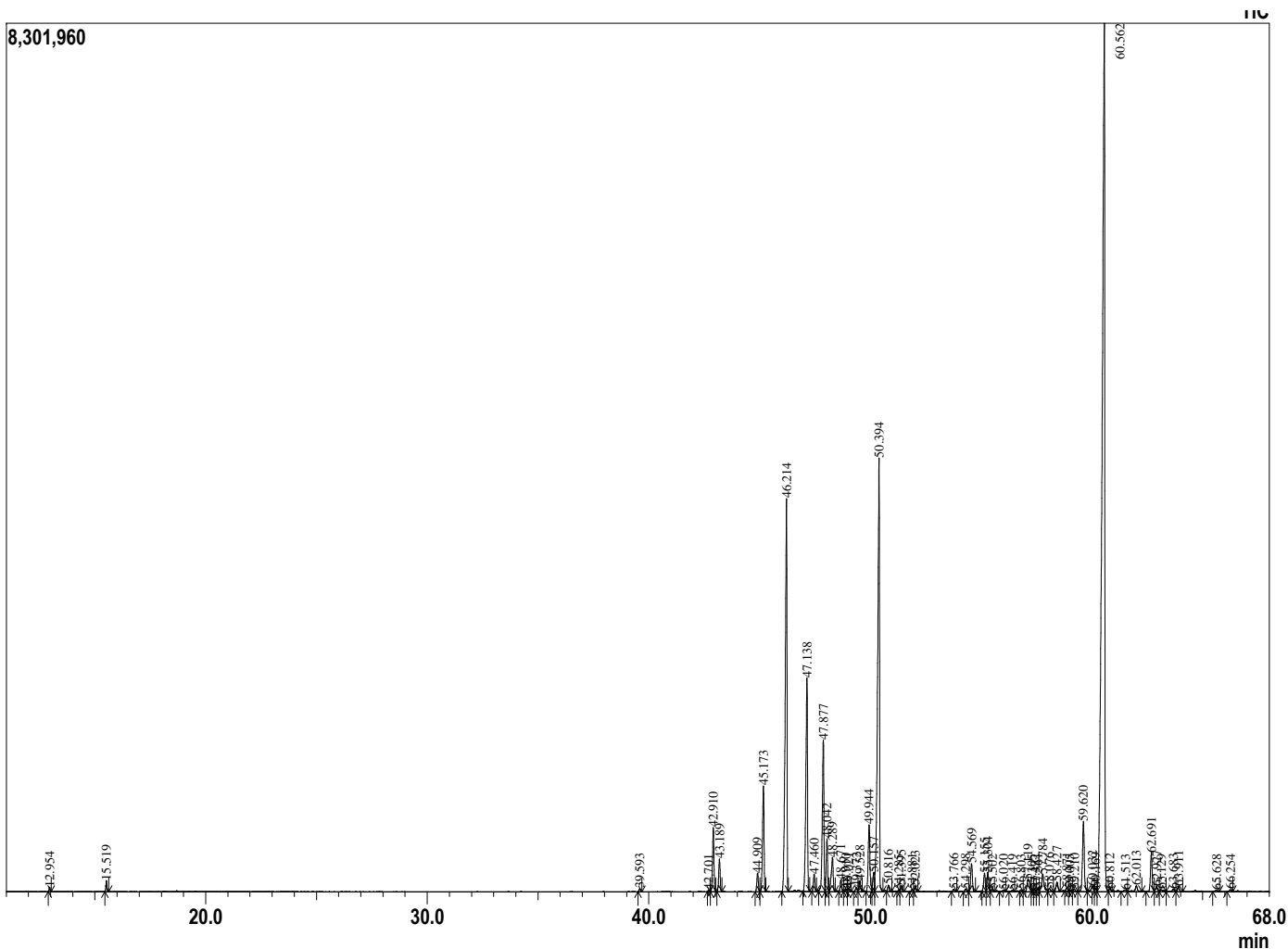


Analyzed by : Dr. Prabodh Satyal
 Analyzed : 4/5/2018 6:11:51 PM
 Sample Type : Essential Oil
 Sample Name : Patchouli
 Lot# : 18000042
 Injection Volume : 0.20

Sample Information



Peak Report TIC



R.Time	Name	Area%
12.954	Pinene<alpha->	0.07
15.519	Pinene<beta->	0.21
39.593	Elemene<delta->	0.07
42.701	Elemene<beta->	0.03
42.910	Patchoulene<beta->	1.60
43.189	Elemene<beta->	0.82
44.909	Cycloseychellene	0.48
45.173	Caryophyllene(E-)	2.80
46.214	Guaiene <alpha->	11.86
47.138	Seychellene	6.19
47.460	Humulene<alpha->	0.45
47.877	Patchoulene<alpha->	4.22
48.042	Caryophyllene<9-epi-(Z)->	1.31
48.289	Aromadendrene<allo->	1.14
48.671	Caryophyllene<9-epi-(E)->	0.31
48.910	Patchouli	0.07
49.021	Germacrene D	0.09
49.372	Guaiene<cis-beta->	0.12
49.528	Selinene <beta->	0.28
49.944	Aciphyllene	2.01
50.157	Pentadecane+Bicyclogermacrene	0.57
50.394	Bulnesene<alpha->	14.11
50.816	Nootkatene	0.16
51.285	Nootkatene isomer	0.04
51.395	Selinene<7-epi-alpha->	0.15
51.881	Patchouli	0.06
52.023	Nootkatene isomer	0.16
53.766	Germacrene B	0.07
54.298	Patchouli	0.08
54.569	D Norpatchoulenol	0.83
55.155	Caryophyllene oxide	0.54
55.304	Spathulenol-isomer	0.55
55.502	Isocaryophyllene oxide	0.06
56.020	Cyperene-6-ol	0.07
56.419	Fokienol	0.05
56.803	Humulene epoxide II	0.05
57.119	Muurola-4,10(14)-dien-1-beta-ol	0.60
57.305	Patchouli	0.05
57.432	Sphathulenol <iso->	0.05
57.561	Patchouli	0.09
57.784	Patchouli	0.79
58.076	Aromadendrene epoxide-<allo->	0.11
58.427	Pogostol	0.31
58.871	Intermedeol<neo->	0.10
59.005	Patchouli	0.05
59.210	Patchouli	0.06
59.620	Intermedeol<neo->	2.22
60.032	Patchouli	0.25
60.169	Patchouli	0.10
60.562	Patchouli alcohol	41.42
60.812	Germacra-4(15),5,10(14)-trien-1-alpha-ol	0.09
61.513	Germacra-4(15),5,10(14)-trien-1-beta-ol	0.07
62.013	Thujopsenol <cis>	0.25
62.691	Pogostone	1.09
62.927	Atlantone isomer	0.17
63.129	Isobicyclogermacreanal	0.09
63.683	Zizanone	0.09
63.911	Patchouli	0.15
65.628	Patchouli	0.06
66.254	Squamulosone	0.06
		100.00

Comments:
 The analysis of this Patchouli batch sample meets the expected chemical profile of authentic essential oil of Pogostemon Cablin.

Copyright © 2018 by Aromatic Plant Research Center (APRC). All rights reserved.
 The information contained in this document may not be used, published or redistributed, including online, without the prior written consent of APRC.

Reviewed by: Ambika Poudel