

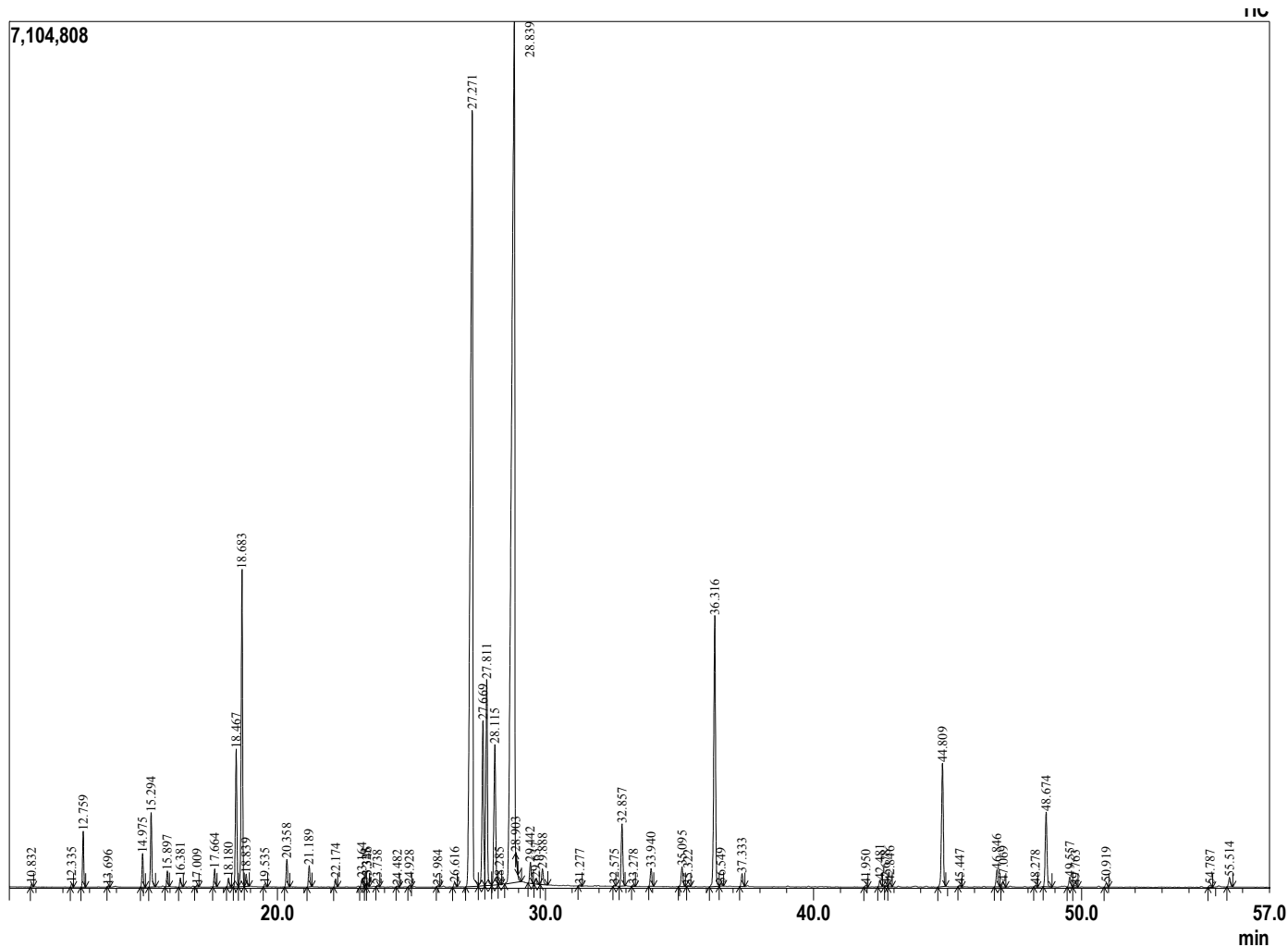
Sample Information

Analyzed by : Dr. Prabodh Satyal
 Analyzed : 12/1/2018 6:31:07 PM
 Sample Type : Essential Oil
 Sample Name : Peppermint
 Lot# : 18000435
 Injection Volume : 0.20



Peak Report TIC

R.Time	Name	Area%
10.832	Furan, 2,5-diethyltetrahydro-	0.04
12.335	Thujene <alpha->	0.06
12.759	Pinene <alpha->	0.83
13.696	Camphene	0.02
14.975	Sabinene	0.54
15.294	Pinene <beta->	1.27
15.897	Myrcene	0.26
16.381	Octanol <3>	0.15
17.009	Phellandrene <alpha->	0.04
17.664	Terpinene <alpha->	0.31
18.180	Cymene<para->	0.16
18.467	Limonene	2.53
18.683	1,8-cineole	5.85
18.839	Ocimene <Z-beta>	0.23
19.535	Ocimene <E-beta>	0.05
20.358	Terpinene <gamma->	0.50
21.189	Sabinene hydrate <cis->	0.40
22.174	Terpinolene	0.15
23.164	Linalool	0.17
23.325	Sabinene hydrate<trans->	0.05
23.346	Methyl butyl-2-methyl butyrate<2->	0.06
23.738	Methyl butyl isovalerate<2->	0.03
24.482	Octyl acetate <3->	0.02
24.928	Menth-2-en-1-ol <cis-p>	0.03
25.984	Sabinol<E>	0.02
26.616	Isopulegol	0.09
27.271	Menthone	24.57
27.669	menthofuran	3.52
27.811	Menthone<iso->	4.15
28.115	Neomenthol	3.17
28.285	Borneol	0.04
28.839	Menthol	35.01
28.903	Terpinen-4-ol	0.07
29.442	Menthol <iso>	0.42
29.637	Menthol <neois>	0.11
29.888	Terpineol <alpha>	0.35
31.277	Menthone oxy	0.02
32.575	Hexenyl 2-methyl butanoate<3Z->	0.02
32.857	Pulegone	1.31
33.278	Carvone	0.03
33.940	Piperitone	0.37
35.095	Menthyl acetate <neo>	0.45
35.322	Mentha-1(7),8(10)-dien-9-ol <para->	0.02
36.316	Menthyl acetate	6.12
36.549	Dihydroedulan	0.06
37.333	Menthyl acetate <iso->	0.28
41.950	Copaene <alpha>	0.04
42.481	Bourbonene <alpha>	0.16
42.678	Bourbonene-beta	0.02
42.846	Elemene <beta>	0.10
44.809	Caryophyllene <beta>	2.87
45.447	Copaene <beta>	0.04
46.846	Farnesene<(E)-beta->	0.39
47.069	Humulene <alpha>	0.11
48.278	Cadina-1(6),4-diene <trans->	0.03
48.674	Germacrene D	1.67
49.557	Bicyclogermacrene	0.23
49.763	Muuroolene<alpha->	0.05
50.919	Cadinene <delta->	0.09
54.787	Caryophyllene oxide	0.04
55.514	Viridiflorol	0.22
		100.00



Comments:
 The analysis of this Peppermint batch sample meets the expected chemical profile of authentic essential oil of *Mentha piperita*.

Copyright © 2018 by Aromatic Plant Research Center (APRC). All rights reserved. The information contained in this document may not be used, published or redistributed, including online, without the prior written consent of APRC.

Reviewed by: Ambika Poudel