

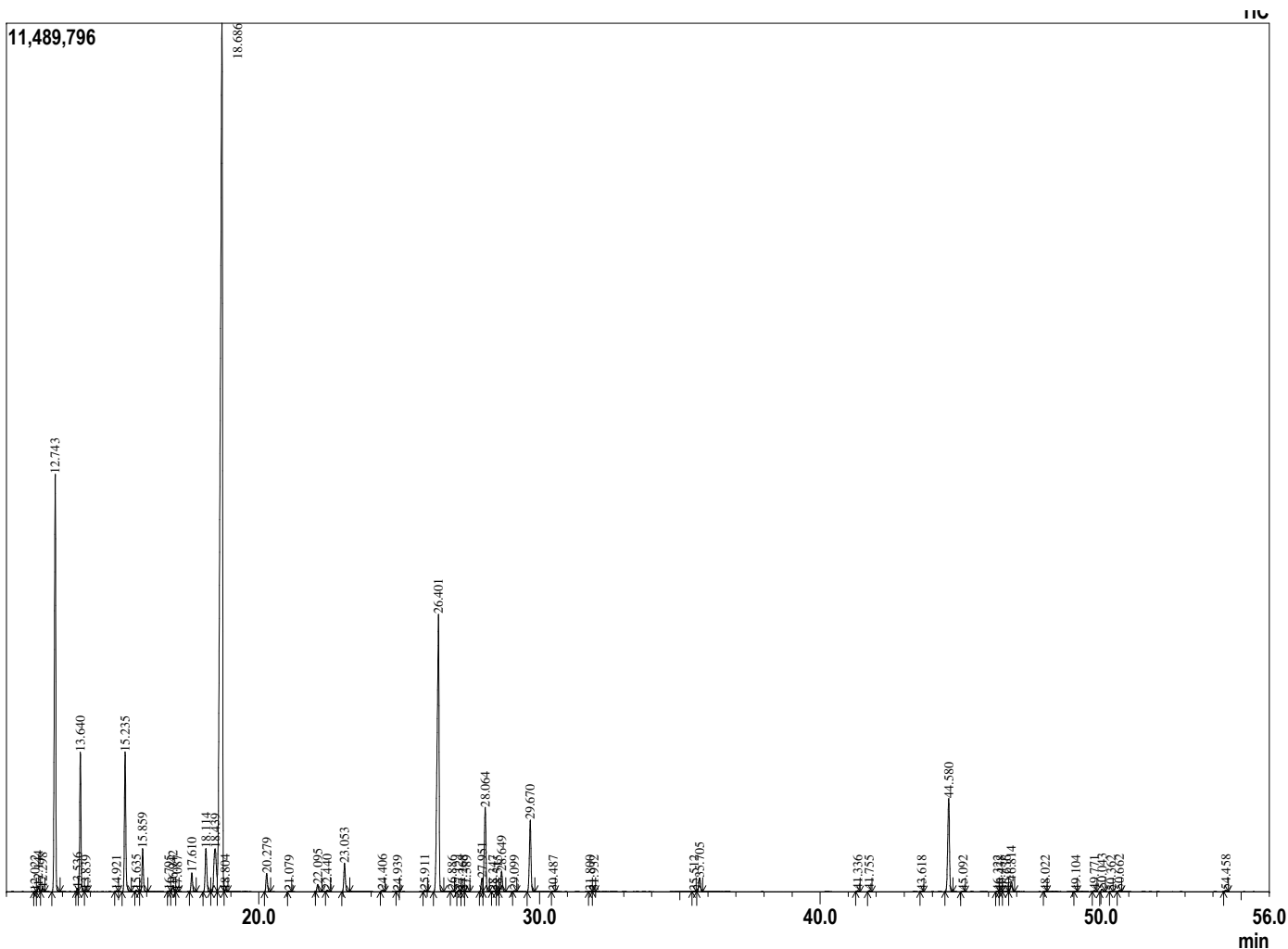
Sample Information

Analyzed by : Dr. Prabodh Satyal
 Analyzed : 8/18/2018 4:00:45 AM
 Sample Type : Essential Oil
 Sample Name : Rosemary
 Lot# : 18000344
 Injection Volume : 0.10



Peak Report TIC

R.Time	Name	Area%
12.022	Pinene isomer	0.02
12.144	Tricyclene	0.15
12.298	Thujene <alpha>	0.10
12.743	Pinene <alpha>	12.93
13.536	Fenchene <alpha>	0.09
13.640	Camphene	3.97
13.839	Thuja-2,4(10)-diene	0.03
14.921	Sabinene	0.03
15.235	Pinene <beta>	4.29
15.635	Octanone<3->	0.05
15.859	Myrcene	1.32
16.795	Pseudolimonene	0.03
16.942	Phellandrene <alpha>	0.19
17.087	Carene<delta-3->	0.02
17.610	Terpinene <alpha>	0.62
18.114	Cymene <para>	1.59
18.439	Limonene	2.36
18.686	1,8-cineole	45.44
18.804	Ocimene<(Z)-beta>	0.06
20.279	Terpinene <gamma>	0.60
21.079	Sabinene hydrate <cis>	0.03
22.095	Terpinolene	0.24
22.440	Cymenene<para>	0.05
23.053	Linalool	1.02
24.406	Fenchol<endo->	0.06
24.939	Campholenal <alpha>	0.02
25.911	Pinocarveol<trans->	0.05
26.401	Camphor	12.27
26.886	Camphene hydrate	0.03
27.124	Isopulegol	0.06
27.268	Pinocamphone<trans->	0.02
27.389	Pinocarvone	0.04
27.951	Terpineol <delta>	0.47
28.064	Borneol	3.13
28.347	Pinocamphone<cis->	0.02
28.515	1,8-menthadien-4-ol <para>	0.01
28.649	Terpinen-4-ol	0.73
29.099	Cymen-8-ol<para>	0.03
29.670	Terpineol <alpha>	2.61
30.487	Verbenone	0.03
31.800	Citronellol	0.02
31.932	Bornyl formate	0.01
35.512	Thymol	0.02
35.705	Bornyl acetate	0.53
41.336	Ylangene<alpha>	0.04
41.755	Copaene<alpha>	0.04
43.618	Caryophyllene <cis>	0.02
44.580	Caryophyllene <trans>	3.70
45.092	Ylangene <beta>	0.02
46.322	Geranyl acetone	0.03
46.438	Aromadendrene	0.02
46.636	Farnesene<(E)-beta>	0.02
46.814	Humulene <alpha>	0.41
48.022	Cadina-1(6),4-diene <trans->	0.03
49.104	Amorphene <gamma>	0.01
49.771	Valencene	0.05
50.043	Bisabolene <beta>	0.10
50.362	Amorphene <delta>	0.02
50.662	Cadinene <delta>	0.05
54.458	Caryophyllene oxide	0.06
		100.00



Comments:
 The analysis of this Rosemary batch sample meets the expected chemical profile of authentic essential oil of *Rosmarinus officinalis*.

Copyright © 2018 by Aromatic Plant Research Center (APRC). All rights reserved.
 The information contained in this document may not be used, published or redistributed, including online, without the prior written consent of APRC.

Reviewed by: Ambika Poudel