

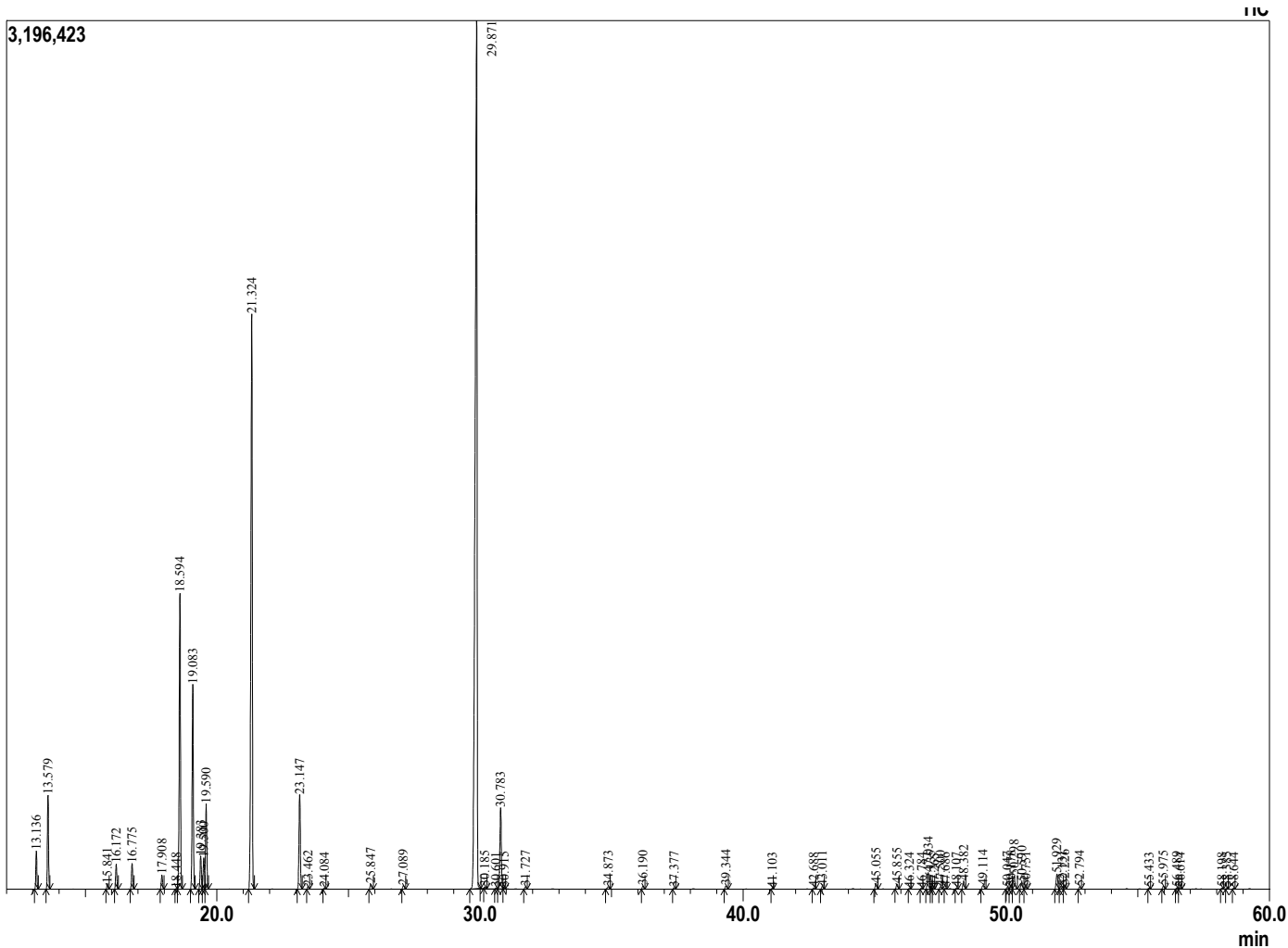
Sample Information

Analyzed by : Dr. Prabodh Satyal
 Analyzed : 5/10/2019 3:01:58 PM
 Sample Type : Essential Oil
 Sample Name : Tea Tree
 Lot# : 19000516
 Injection Volume : 0.30



Peak Report TIC

R.Time	Name	Area%
13.136	Thujene <alpha>	0.99
13.579	Pinene <alpha>	2.59
15.841	Sabinene	0.17
16.172	Pinene <beta>	0.74
16.775	Myrcene	0.73
17.908	Phellandrene <alpha>	0.43
18.448	1,4-Cineole	0.02
18.594	Terpinene <alpha>	9.21
19.083	Cymene<para>	6.14
19.383	Limonene	1.04
19.500	Phellandrene <beta>	1.01
19.590	1,8-cineole	2.62
21.324	Terpinene <gamma>	20.15
23.147	Terpinolene	3.25
23.462	Cymenene <para>	0.08
24.084	Linalool	0.04
25.847	Menth-2-en-1-ol <cis-p>	0.18
27.089	Menth-2-en-1-ol <trans-p>	0.14
29.871	Terpinen-4-ol	42.30
30.185	Cymen-8-ol<para>	0.05
30.601	Cineole <1,4 hydroxy>	0.03
30.783	Terpineol <alpha>	3.00
30.915	Piperitol<cis>	0.06
31.727	Piperitol<trans>	0.09
34.873	Unidentified	0.11
36.190	Ascaridol glycol <E>	0.11
37.377	Unidentified	0.05
39.344	Unidentified	0.12
41.103	Cubebene <alpha>	0.02
42.688	Ylangene <alpha>	0.04
43.011	Copaene <alpha>	0.10
45.055	Gurjunene <alpha>	0.22
45.855	Caryophyllene <trans>	0.20
46.324	Copaene <beta>	0.03
46.784	Maaliene <alpha>	0.04
47.034	Aromadendrene	0.71
47.135	Bourb-11-ene	0.06
47.265	Guaine <alpha>	0.02
47.500	Selina5,11-diene	0.09
47.686	Murrola-3,5-diene <trans>	0.04
48.107	Humulene <alpha>	0.04
48.382	Alloaromadendrene	0.32
49.114	Cadina-1(6),4-diene<cis>	0.17
50.047	Selinene <delta>	0.07
50.178	Selinene <beta>	0.12
50.298	Viridiflorene	0.58
50.590	Bicyclogermacrene	0.30
50.751	Muurolene <alpha>	0.08
51.929	Cadinene <delta>	0.60
52.131	Calamenene <trans>	0.10
52.226	Zonarene	0.13
52.794	Cadine-1,4-diene <trans>	0.09
55.433	Spathulenol	0.04
55.975	Globulol	0.12
56.489	Viridiflorol	0.05
56.614	Cubeban-11-ol	0.04
58.198	Eudesmol <isomer>	0.03
58.385	Cubebol<1-epi>	0.05
58.644	Spathulenol<iso>	0.03



Comments:
 The analysis of this Tea Tree batch sample meets the expected chemical profile of authentic essential oil of *Melaleuca alternifolia*.

Copyright © 2018 by Aromatic Plant Research Center (APRC). All rights reserved. The information contained in this document may not be used, published or redistributed, including online, without the prior written consent of APRC.

Reviewed by: Ambika Poudel