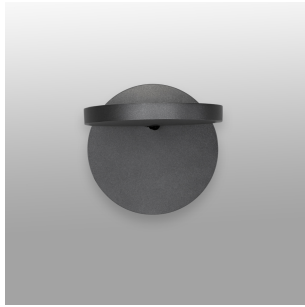


Demetra wall spot w/switch 2700K anthracite grey

SPECIFICATIONS

1730W18A



Design By

Naoto Fukasawa

Collection

Design



Specifications

Delivered lumens	472lm
Light output ratio	44.74lm/W
Power consumption	10.6W
Led type	9.5W Array*
CCT (Correlated Color Temperature)	2700K
CRI (Color Rendering Index)	>90
Life expectancy	50000Hrs
Control type	DIMMABLE (On Head) / Switch (On Head)
Input Voltage	120V
Driver	TCl - 1 x DC-12W-550MA-AR

Colors & Finishes

■ Anthracite grey

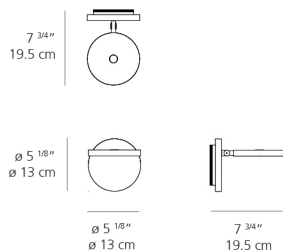
Materials

- Head in painted aluminum
- Lower head diffuser in thermoplastic
- Wall bracket in aluminum

Features & Accessories

- Tilttable and rotatable head
- Dimmer switch incorporated on head

Dimensions



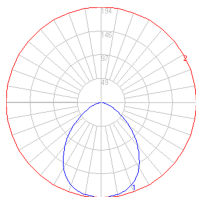
Packaging

1 Box

1 x 11-1/8" x 9-1/8" x 7-15/16" / 2.65 lbs - 28 cm x 23 cm x 20 cm / 1.2 kg

Light distribution

Direct



Red = Max Cd. Through Vertical plane

Blue = Max Cd. Through Horizontal plane

Luminaire weight

.99 lbs / .45 kg

Warranty

5 year limited warranty, Upon registration. Click here to register your purchase.