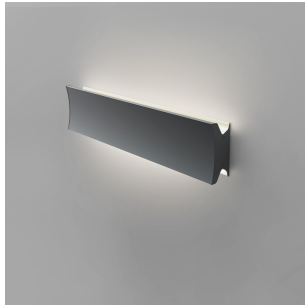


# Lineacurve 24 dual wall/ceiling 2-wire dimming Anthracite Grey SPECIFICATIONS

RDLC2B93006AN



**Design By** \_\_\_\_\_  
NA Design

**Collection** \_\_\_\_\_  
Design




## Specifications

Delivered lumens	1835lm
Light output ratio	43.8lm/W
Power consumption	41.8W
Led type	2X18W Array*
CCT (Correlated Color Temperature)	3000K
CRI (Color Rendering Index)	>90
Life expectancy	50000Hrs
Control type	Dimmable 2-Wire**
Input Voltage	120-277V
Driver	HATCH - 2 x XTC32-0700P-UNV-I

\*\*Reverse or forward phase (120v only)

## Colors & Finishes

 Anthracite grey

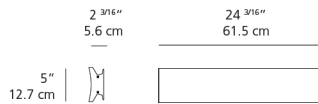
## Materials

- Body in extruded aluminum
- End caps in aluminum

## Features & Accessories

- Extrusion covers junction box dimension

## Dimensions



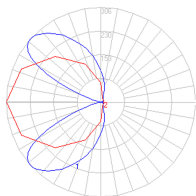
## Packaging

1 Box

1 x 28-5/16" x 8-1/16" x 5-1/16" / 7.61 lbs - 71.76 cm x 20.32 cm x 12.7 cm / 3.45 kg

## Light distribution

Direct/Indirect



Red = Max Cd. Through Vertical plane  
Blue = Max Cd. Through Horizontal plane

## Luminaire weight

6.22 lbs / 2.82 kg

## Warranty

5 year limited warranty,  
Upon registration. Click here  
to register your purchase.