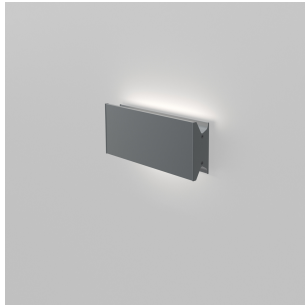


Lineafat 12 mono wall/ceiling 2-wire dimming

SPECIFICATIONS

RDLF1D93506AN



Design By

NA Design

Collection

Design



Specifications

| | |
|------------------------------------|-------------------------------|
| Delivered lumens | 437lm |
| Light output ratio | 44.6lm/W |
| Power consumption | 9.8W |
| Led type | 8.5W Array* |
| CCT (Correlated Color Temperature) | 3500K |
| CRI (Color Rendering Index) | >90 |
| Life expectancy | 50000Hrs |
| Control type | Dimmable 2-Wire** |
| Input Voltage | 120-277V |
| Driver | HATCH - 1 x XTC16-0350P-UNV-I |

**Reverse or forward phase (120v only)

Colors & Finishes

■ Anthracite grey

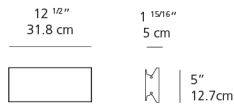
Materials

- Body in extruded aluminum
- End caps in aluminum

Features & Accessories

- Extrusion covers junction box dimension

Dimensions



Packaging

1 Box

1 x 16-9/16" x 8-1/16" x 5-1/16" / 4.21 lbs - 41.91 cm x 20.32 cm x 12.7 cm / 1.91 kg

Light distribution

Direct

Luminaire weight

3.2 lbs / 1.45 kg

Warranty

5 year limited warranty,
Upon registration. Click here
to register your purchase.