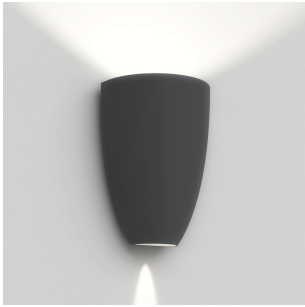


# Molla wall 3000K grey

T4190NLW18

## SPECIFICATIONS



### Design By

Ernesto Gismondi

### Collection

Outdoor



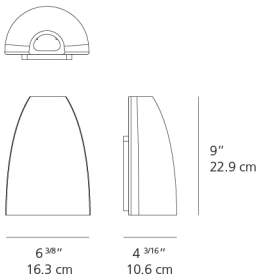
### Colors & Finishes

■ Anthracite grey

### Materials

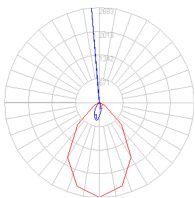
- Body in aluminum
- Upper and lower diffusers in silkscreened tempered glass

### Dimensions



### Light distribution

Direct/Indirect



Red = Max Cd. Through Vertical plane

Blue = Max Cd. Through Horizontal plane

### Specifications

Delivered lumens	407lm
Light output ratio	31.31lm/W
Power consumption	13W
Led type	10W Array* + 2W Array*
CCT (Correlated Color Temperature)	3000K
CRI (Color Rendering Index)	>80
Life expectancy	50000Hrs
Control type	On/Off
Input Voltage	120V
Driver	MEAN WELL - 1 x APC-16-700
BUG Rating	B0-U3-G0

### Features & Accessories

- Can be installed in both directions depending on desired lighting effect
- Electronic driver integrated
- Standard non dimmable
- For dimming options, please consult with your Artemide Sales Representative

### Packaging

1 Box

1 x 14-11/16" x 14-11/16" x 7-1/8" / 6.33 lbs - 37 cm x 37 cm x 17.8 cm / 2.87 kg

### Luminaire weight

4.41 lbs / 2 kg

### Warranty

5 year limited warranty,  
Upon registration. Click here  
to register your purchase.