



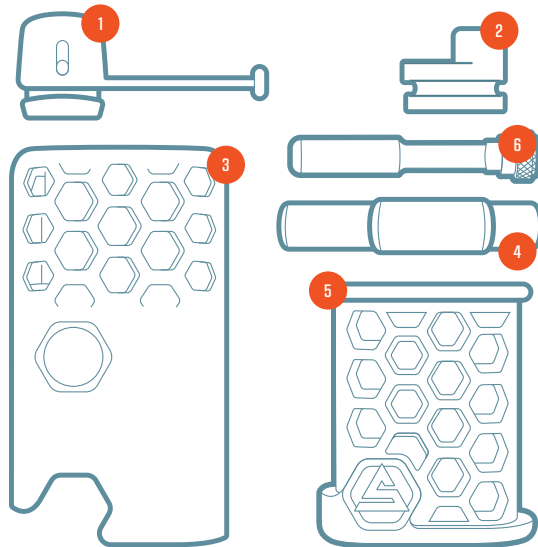
QUICK START GUIDE



WATCH THE FULL INSTRUCTIONAL VIDEO AT:
[SMOKINEER.COM/HOW2](https://smokineer.com/how2)

NOMAD ANATOMY

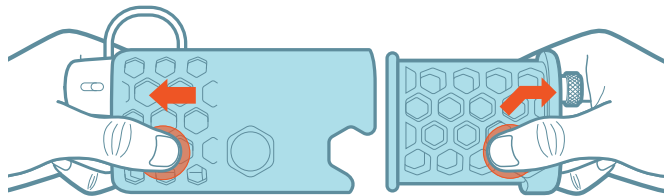
1. Cap
2. Lid
3. Main Body
4. Pipe
5. Container
6. Packer



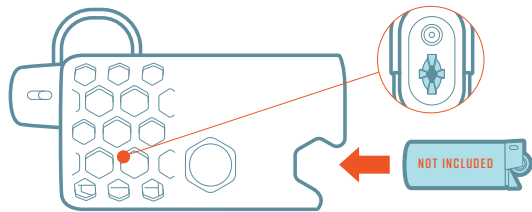
STEP 1: INSTALLING LIGHTER

1. Purchase a Mini lighter from the store. To install remove the container from the main body.

**Lighter not included. Sold separately. Mini lighter required.*

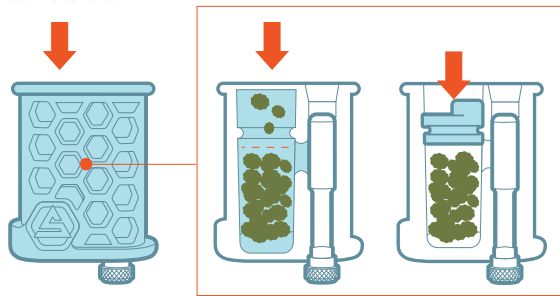


2. Slide the lighter into position inside the main body next to the pipe, until it stops.
(Position the lighter so that the button is on the side away from the pipe)

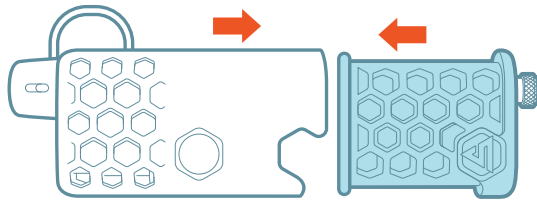


STEP 2: FILLING YOUR NOMAD

1. Place ground smoking material in the container, until material loosely fills the cavity until approximately half an inch under the sealing groove. Then pop cap into place to seal the container.

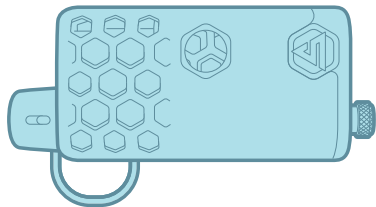


2. Once loaded, insert container back into the main body. Push fully until it stops.

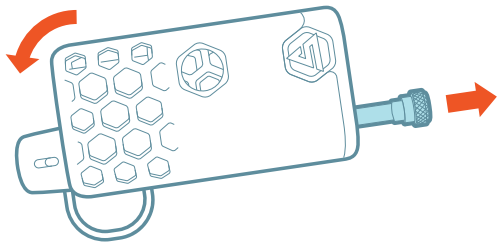


STEP 3: PACKING POSITION

1. Position Nomad in the closed position so that the pipe and packer are on the bottom.



2. Slightly tilt your nomad so the pipe is angled toward the ground then pull the packer to extend until it stops.

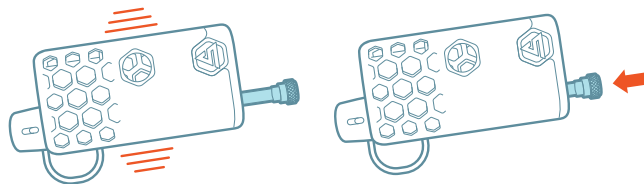


TRY THIS!

- Try turning the packer when it's closed, you should feel it grind a bit. This is another sign that the bowl is not packed completely. When you have a properly packed bowl it will feel softer.
- Spending a little time figuring out what a properly packed bowl feels like will save you time on your next adventure.

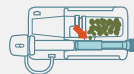
STEP 4: PACKING A BOWL

1. Tap or shake against hand 3-5 times. Pack bowl by sliding packer to the closed position.



Warning: The number of taps depends on the grind and tackiness of your material. Tapping too many or too few times can cause over/under packing and ineffective use of this product.

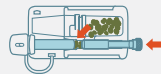
HOW IT WORKS



When the packer is closed it seals the container by blocking the pass through.



When you extend the packer then tap/shake, the pass through will allow the material to pass into the packing chamber.



When the packer is pushed forward it packs material into bowl.

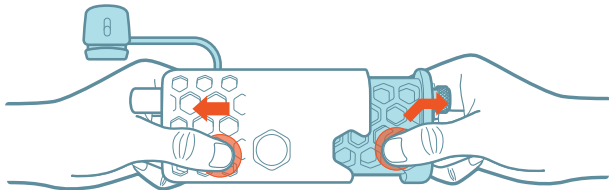
STEP 5: SMOKING POSITION

1. Position the Nomad so that the pipe and packer are on top horizontally.



2. Using the "S" thumb-hold and honeycomb grip, pull corner of container so that it extends until it clicks into the open position. If the entire container comes out, simply reinsert the container until it pops into the open position. And remove cap from pipe.

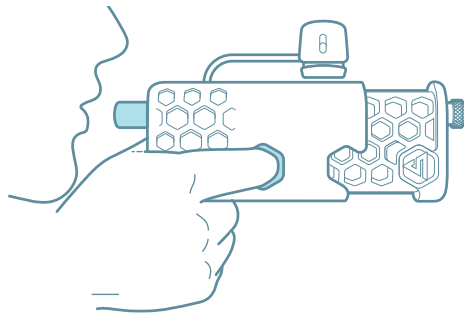
TIP: When opening your nomad DON'T hold by the sleeve of the main body. To open hold by the honeycomb and pull the S



STEP 6: SMOKING

1. Put your pointer finger through one of the finger holes onto the end of the lighter and your thumb around the end of the Nomad under the pipe, then squeeze with your pointer finger. Start drawing air through the pipe right as you ignite the lighter, lighting before will diminish inside oxygen needed for flame. You should feel when the smoke starts to come through the pipe. If you don't, try again.

TIP: If you are having problems getting your bowl lit check out our troubleshooting blog at smokineer.com/troubleshooting



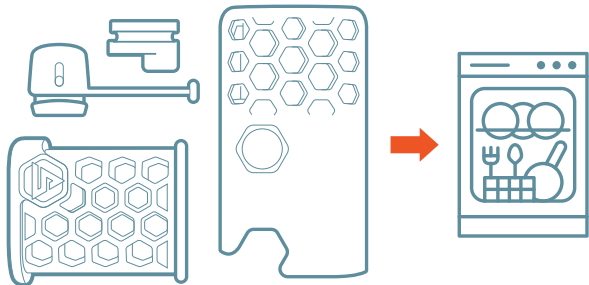
WIND BLOCKER

In high wind situations place the cap in the finger hole opposite the hole being used to ignite the lighter. The cap allows air flow for use while blocking wind and water.



STEP 7: CLEANING

1. The silicone parts of the Nomad are 100% dishwasher safe and is always our first step in cleaning. Afterwards you simply take a damp cloth and quickly wipe out anything the dishwasher may have missed as not all dishwashers were created equally.



2. As for the pipe and packer, you simply slide them out and clean them as you would any other pipe. i.e. salt and warm water, pre-mix solution, etc...



FAQS

Q: Does the Nomad work in cold weather?

A: Yes, per normal lighter use the extreme cold can affect butane fuel. We recommend keeping it close to your body in an inside pocket or next to a pocket/hand warmer in extreme colder temps.

Q: Is the Nomad water proof?

A: No, however the Nomad has water resistant seals at the plunger grip, container lid, main body, and pipe cap. Rain, splashes, drops, or short submersion is typically OK. If your Nomad falls in the water, no problem, just pull it out and open to use.

Q: I am having problems debowing the pipe.

A: This is usually caused by the bowl not being completely smoked, or from over packing. In either case smoke the rest or grab a poking device, stick it in the bowl and move it around, then blow through the pipe and everything should come out.

Q: I'm having a hard time getting a hit because the bowl is packed to tight.

A: Break up the bowl with a toothpick and remove some material from the bowl. To pack the bowl, tap only 3-5 times before packing. **Fewer taps for dry/fine smoking material, more for sticky/coarse material. **Until you get the hang of it, look inside the end of the container to see if there is a build up of material on the end of the packer. If there is, follow the steps for returning that material to the container in the previous How-To Guide Steps.*

Q: I am having a hard time getting my cap off.

A: Gently grab the cap and twist back and forth while pulling. Applying too much pressure to the pipe from squeezing makes it more difficult to pull.

Q: The tether for my cap popped out of the Nomad.

A: Simply push the cap tether connector tip into the Nomad's open side port. You can use the back of a pen to help.

FAQS CONTINUED

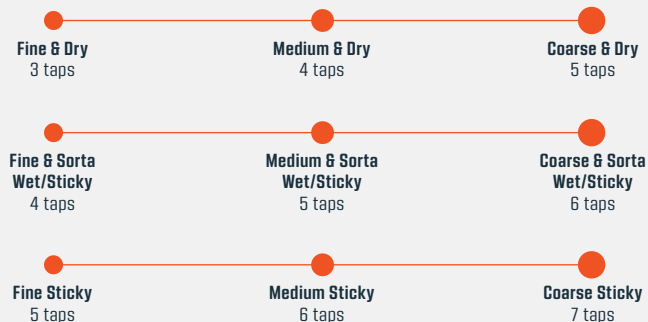
Q: How do I know if my bowl is packed?

A: When fully inserted, twist the plunger with slight pressure. If you feel a grinding sensation the bowl is not fully packed and you should try 1-2 more taps. If the plunger twists and it feels smooth with no grind, your bowl is packed.

Q: How do I know how many times to tap the Nomad to get a perfectly packed bowl every time?

A: We recommend 3-5 solid hand taps before packing, fewer for the dry and finely ground material, and more for the sticky and coarse material. If it's not full, tap 1-2 more times as needed until it's packed. This is a learning experience and will become easier the more you practice.

Starting points base on you material:



LEGAL DISCLAIMER

THIS LEGAL DISCLAIMER (the "Disclaimer") applies to the use of the Nomad and all of its packaging and/or accessories (collectively, the "Product"). This Disclaimer is provided in addition to, and is not a substitute for, the information provided on the labeling of the Product, the Material Safety Data Sheets, or the Smokineer website (<https://smokineer.com/>) (collectively, the "Product Information"). Smokineer LLC, and any parent, affiliate, or related companies (collectively, the "Company") reserve the right to change the Product Information at any time without notice. This Disclaimer and all Product Information should be read and understood before using the Product. For the most current Product Information, please visit the Smokineer website (<https://smokineer.com/>). If there is any conflict between this Disclaimer and the Product Information, the Product Information shall control.

By opening the package in which the Product is contained (the "Protective Layer") and by using the Product, you (the "User") accept and agree to all terms and conditions provided in both this Disclaimer and the Product Information, without modification of any of the terms, conditions, or notices contained therein. Once the Protective Layer has been removed, User acknowledges that this Disclaimer constitutes a binding and enforceable agreement. User shall be responsible for the safe and proper use of the Product by any subsequent or additional user.

User assumes all risks and potential liabilities in connection with its use of the Product. User further assumes the risk of any changes in any laws, rules, or regulations related to the past, present, and future environmental, safety, or health conditions on, or resulting from, ownership or use of the Product. The Product contains small parts which may present a choking hazard. Keep out of reach of children. The Product has been designed only for its intended use and may not be used for any unlawful purpose; any unlawful use of the Product is expressly prohibited.

The Product is intended to be used with a lighter or other flame producing product. The use of this Product may produce a gas build up inside the container of the Product. User acknowledges that the use of the Product may result in the gas igniting inside the Product, which may result in damage or injury. The risk of damage or injury may be diminished by removing the container from the main body to allow potential butane buildup to dissipate before use. User assumes all risks of injury when using the Product.

No claims, representations, or warranties, whether expressed or implied, are made by the Company as to the safety, reliability, durability, and performance of the Product. Furthermore, the Company accepts no liability whatsoever for the safety, reliability, durability, and performance of the Product. The Product is not warranted against any manufacturing defect from the date of purchase. User acknowledges and agrees that the Company is not responsible or liable for any damage, injury (whether to person or property), or loss arising from or in connection with the Product or its use. To the extent permitted by law, all other warranties of any kind, whether express or implied, including but not limited to the implied warranties of merchantability, fitness for a particular purpose, title, and non-infringement of third-party rights are EXCLUDED. No guarantees are given or implied as to the Product's efficiency, performance, production, or improvements.

TO THE EXTENT PERMITTED BY APPLICABLE LAW, THE COMPANY WILL NOT PAY OR BE LIABLE FOR ANY DIRECT, INDIRECT, INCIDENTAL, PUNITIVE, SPECIAL, OR CONSEQUENTIAL DAMAGES UNDER ANY CIRCUMSTANCES, INCLUDING BUT NOT LIMITED TO LOST REVENUES OR LOST PROFITS. NO PROMISE, REPRESENTATION, AFFIRMATION, OR STATEMENT BY ANY EMPLOYEE OR AGENT OF THE COMPANY WILL BE ENFORCEABLE AGAINST THE COMPANY.

This Disclaimer and any dispute arising from it shall be construed, governed, and enforced in accordance with the laws of the State of Colorado, excluding all choice of law provisions. All text, images, graphics, trademarks, patents, and the overall assemblage, appearance and distinctiveness of the Product (a) are proprietary to the Company; (b) are subject to trademark and trade dress protection; and (c) shall not be reproduced, transmitted, or altered in any way. Any unauthorized use, reproduction, or transmission is strictly prohibited and will be prosecuted to the fullest extent of the law.

Questions or Comments?

Write to:

Smokineer LLC
1281 E. Magnolia St. Suite D 164
Fort Collins, CO 80524

FOR QUESTIONS PLEASE EMAIL US AT:
INFO@SMOKINEER.COM



SMOKINEER.COM